



Exploiting Artificial Intelligence for Advancing Earth and Environmental System Science

*Forrest M. Hoffman^{1,2}, Jitendra Kumar^{1,2},
Zachary L. Langford^{2,1}, V. Shashank Konduri^{3,1},
Nathan Collier¹, and William W. Hargrove⁴*



¹Oak Ridge National Laboratory, Oak Ridge, TN, USA

²University of Tennessee, Knoxville, TN, USA

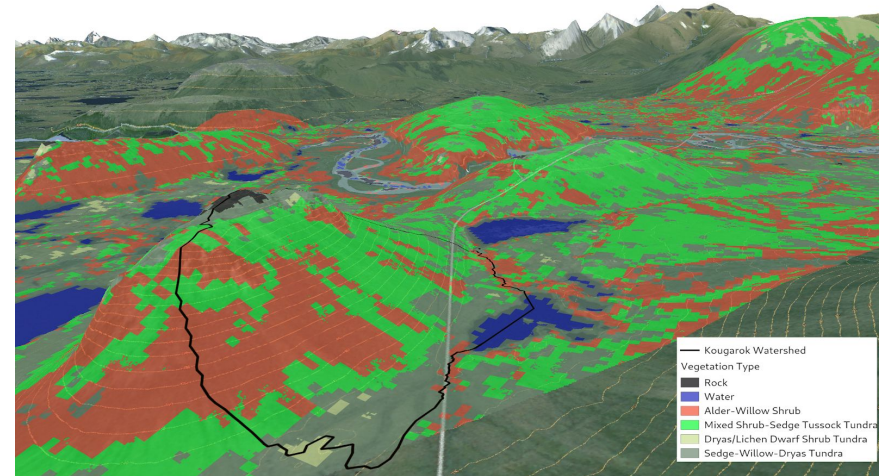
³Northeastern University, Boston, MA, USA

⁴USDA Forest Service, Asheville, NC, USA

August 3 - August 6, 2020

Introduction

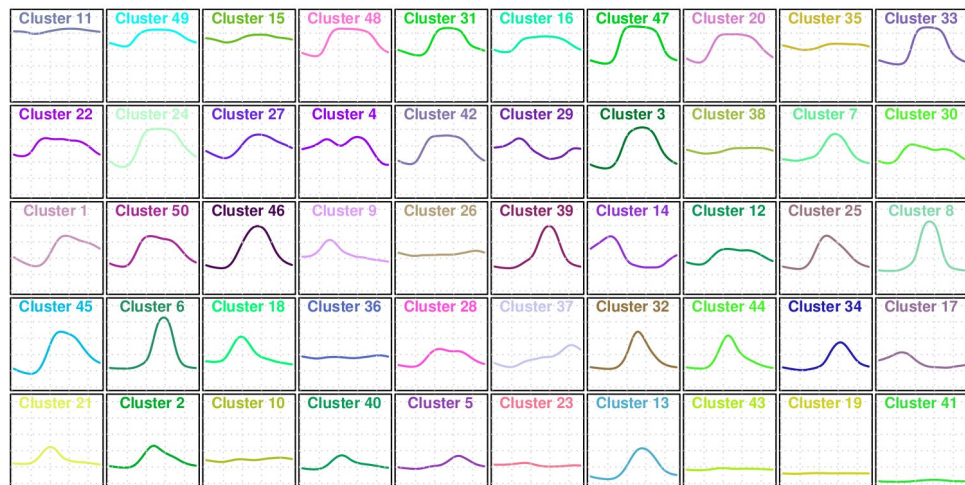
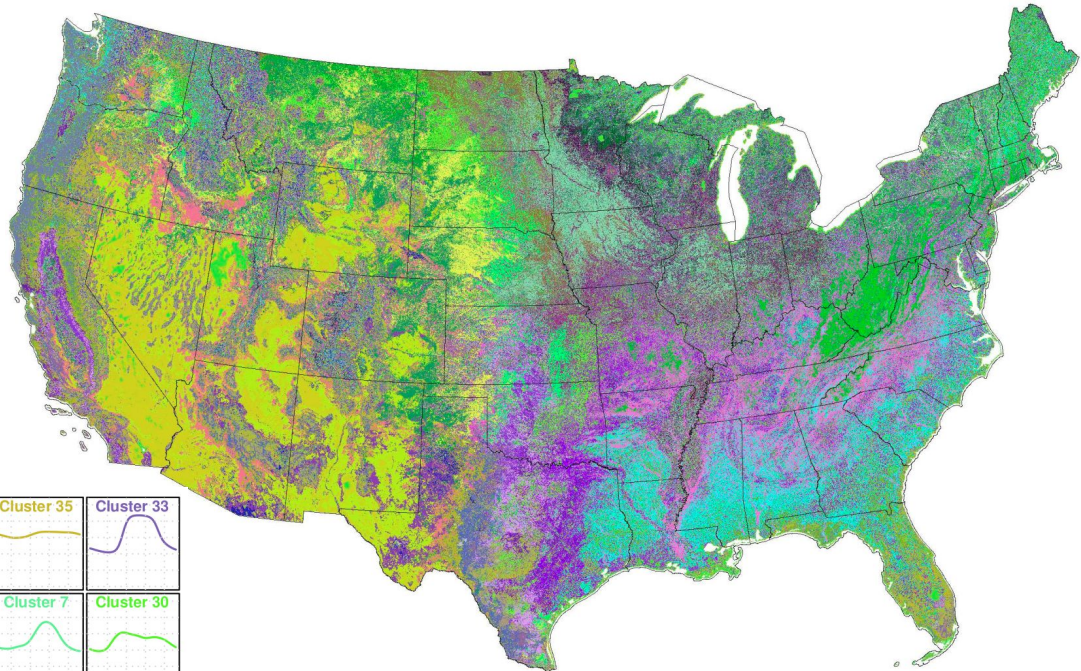
- Observations of the Earth system are increasing in spatial resolution and temporal frequency, and will grow exponentially over the next 5–10 years
- With Exascale computing, simulation output is growing even faster, outpacing our ability to evaluate and benchmark model results
- Explosive data growth and the promise of discovery through data-driven modeling necessitate new methods for feature extraction, change detection, data assimilation, simulation, and analysis



Langford et al. (2019)

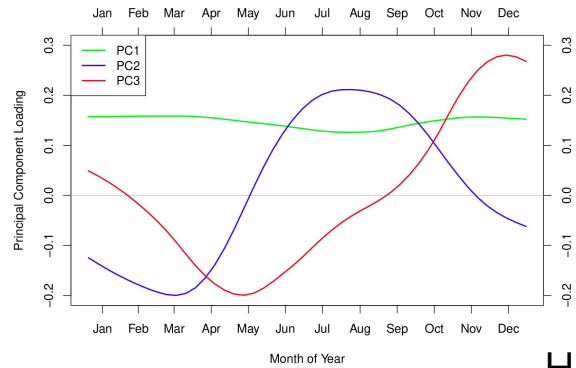
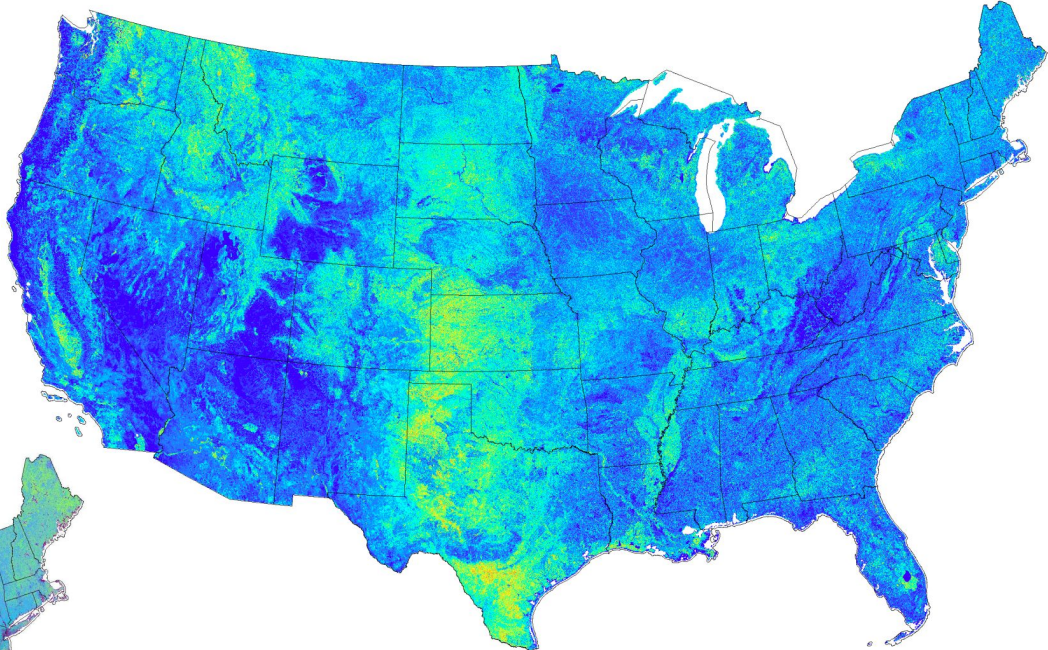
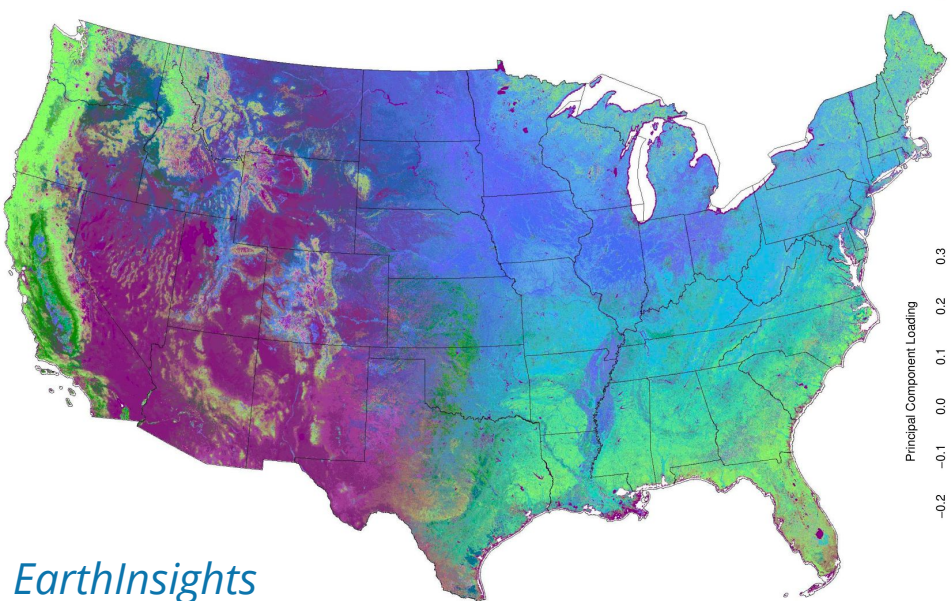
50 Phenoregions for year 2012 (Random Colors)

250m MODIS NDVI
Clustered from 2000 to present



50 Phenoregion Prototypes (Random Colors)

50 Phenoregions Persistence and 50 Phenoregions Max Mode (Similarity Colors)

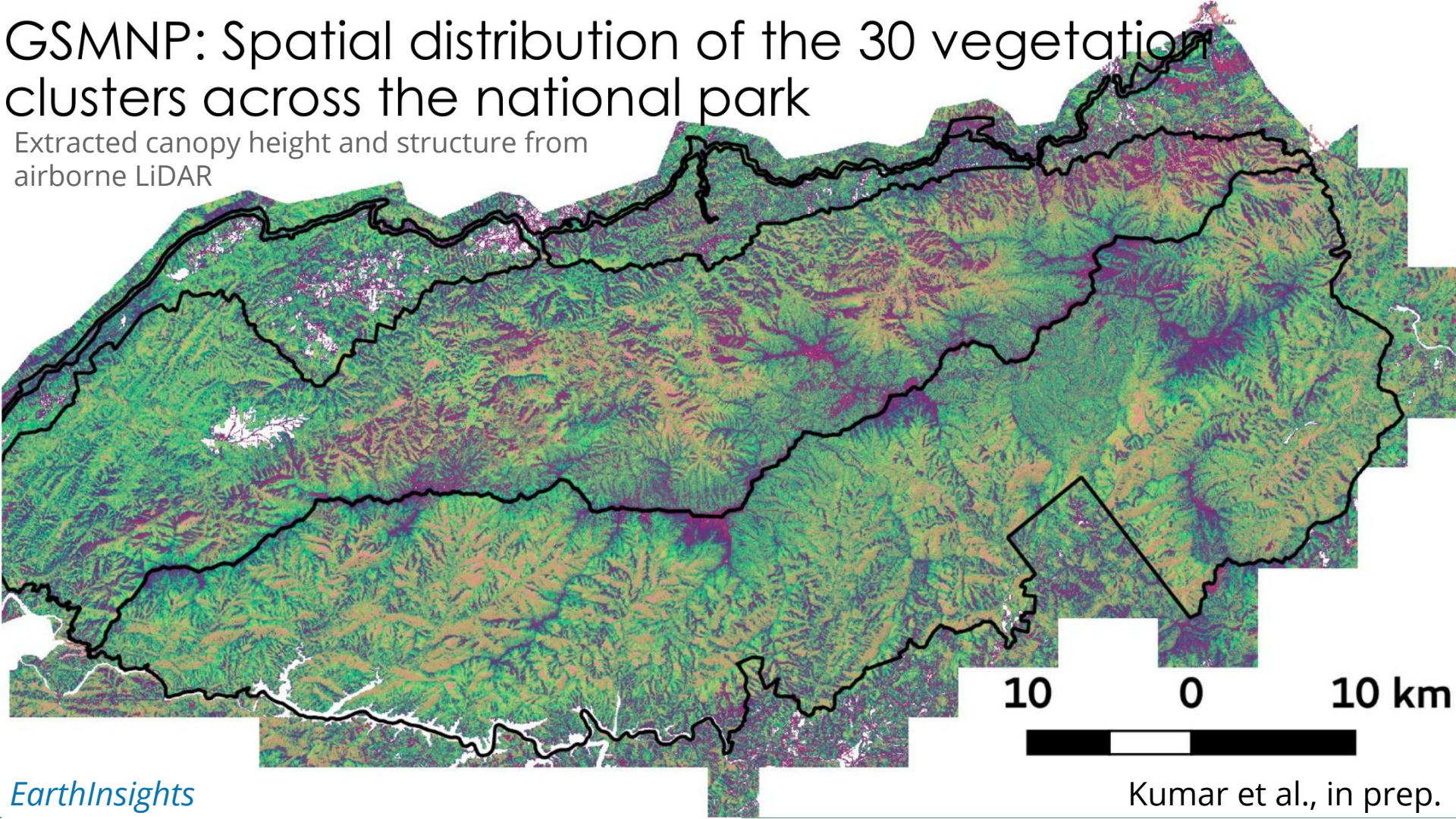


Principal Components Analysis

- PC1 ~ Evergreen
- PC2 ~ Deciduous
- PC3 ~ Dry Deciduous

GSMNP: Spatial distribution of the 30 vegetation clusters across the national park

Extracted canopy height and structure from
airborne LiDAR

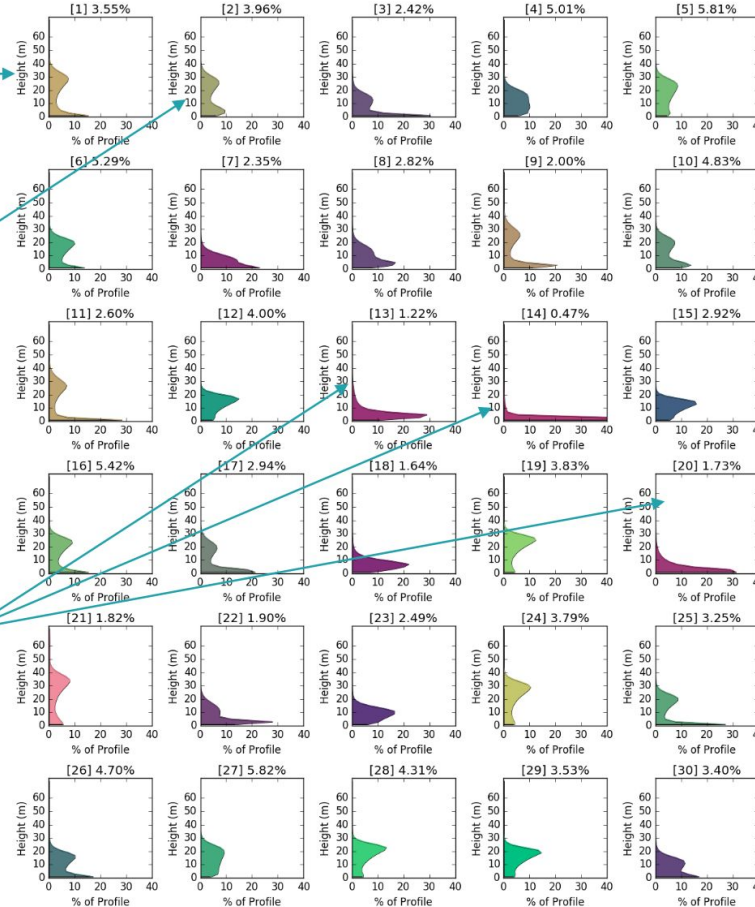


GSMNP: 30 representative vertical structures (cluster centroids) identified

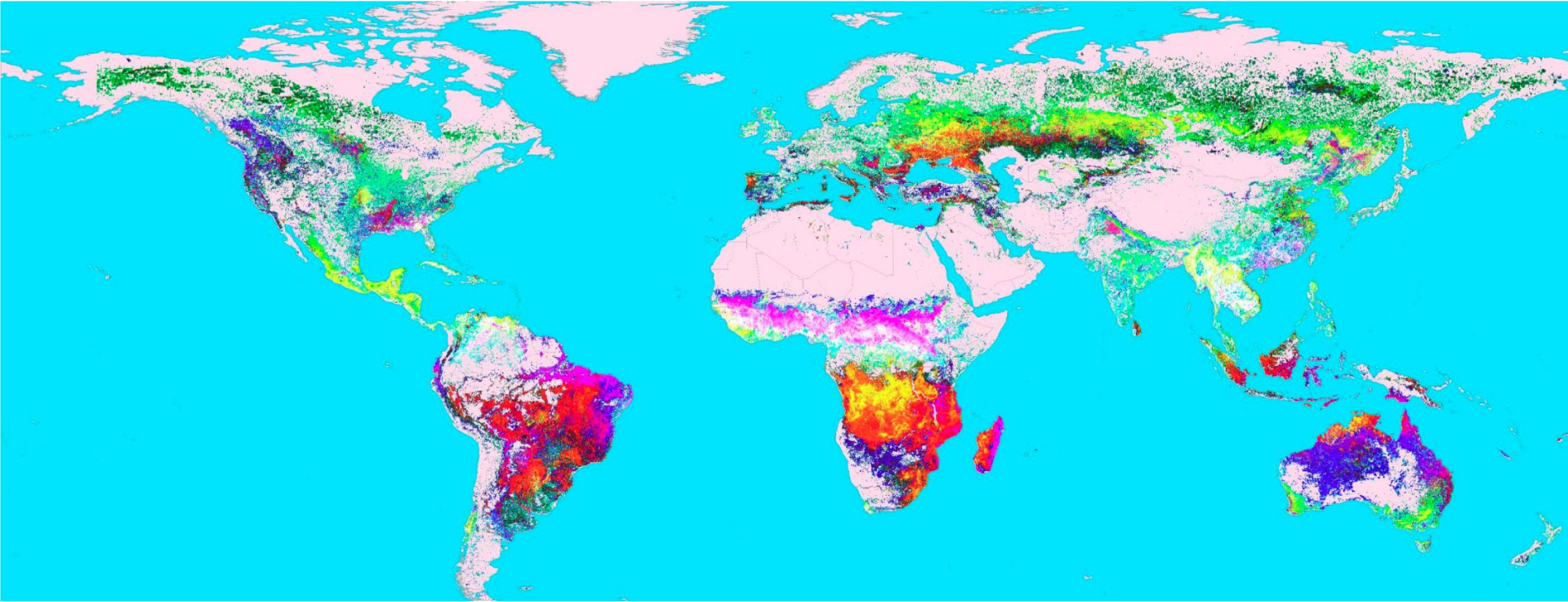
tall forests with low understory vegetation

forests with slightly lower mean height with dense understory vegetation

low height grasslands and heath balds that are small in area but distinct landscape type



Global Fire Regimes

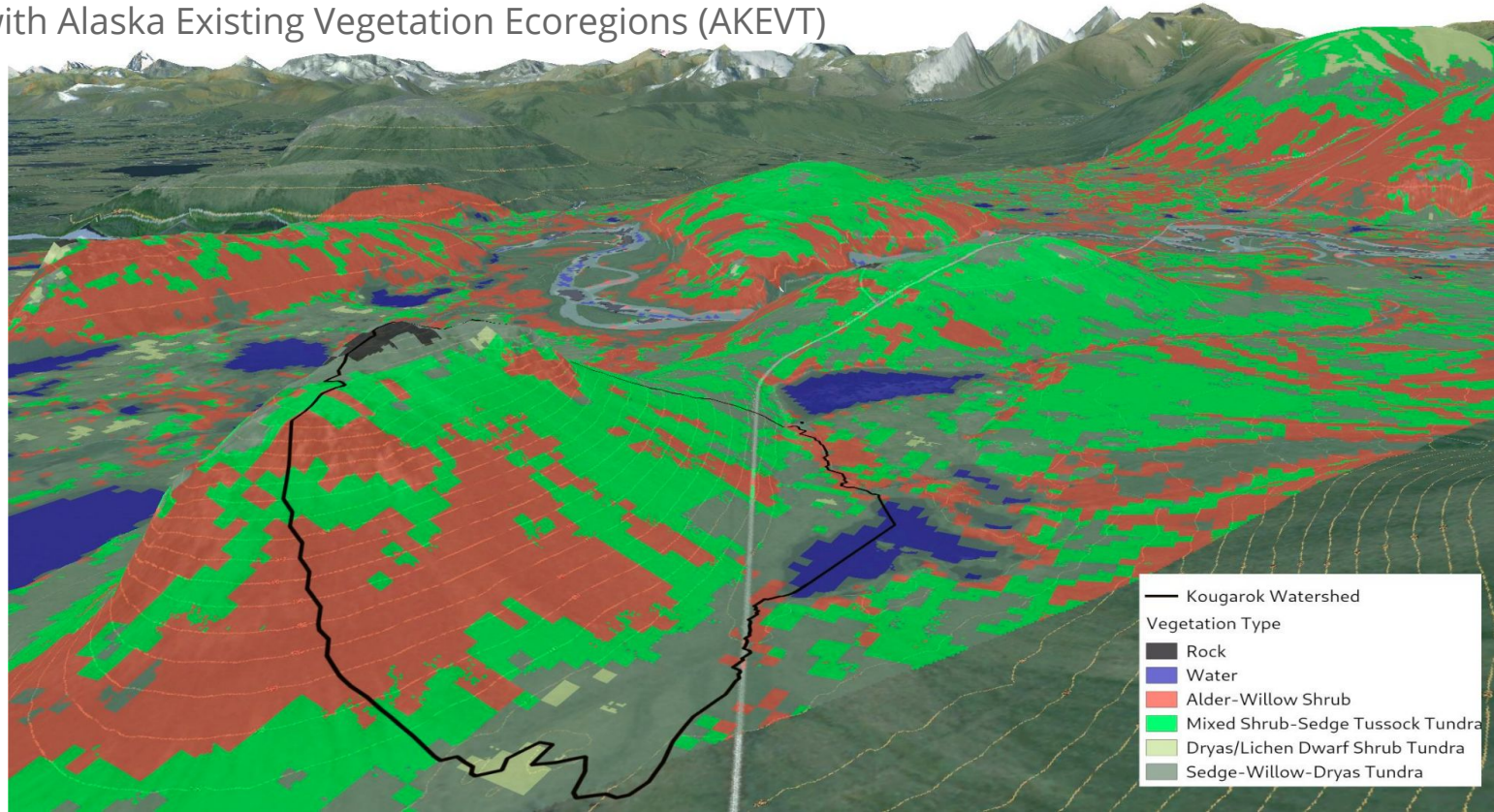


Regions that exhibit similar fire seasonality globally

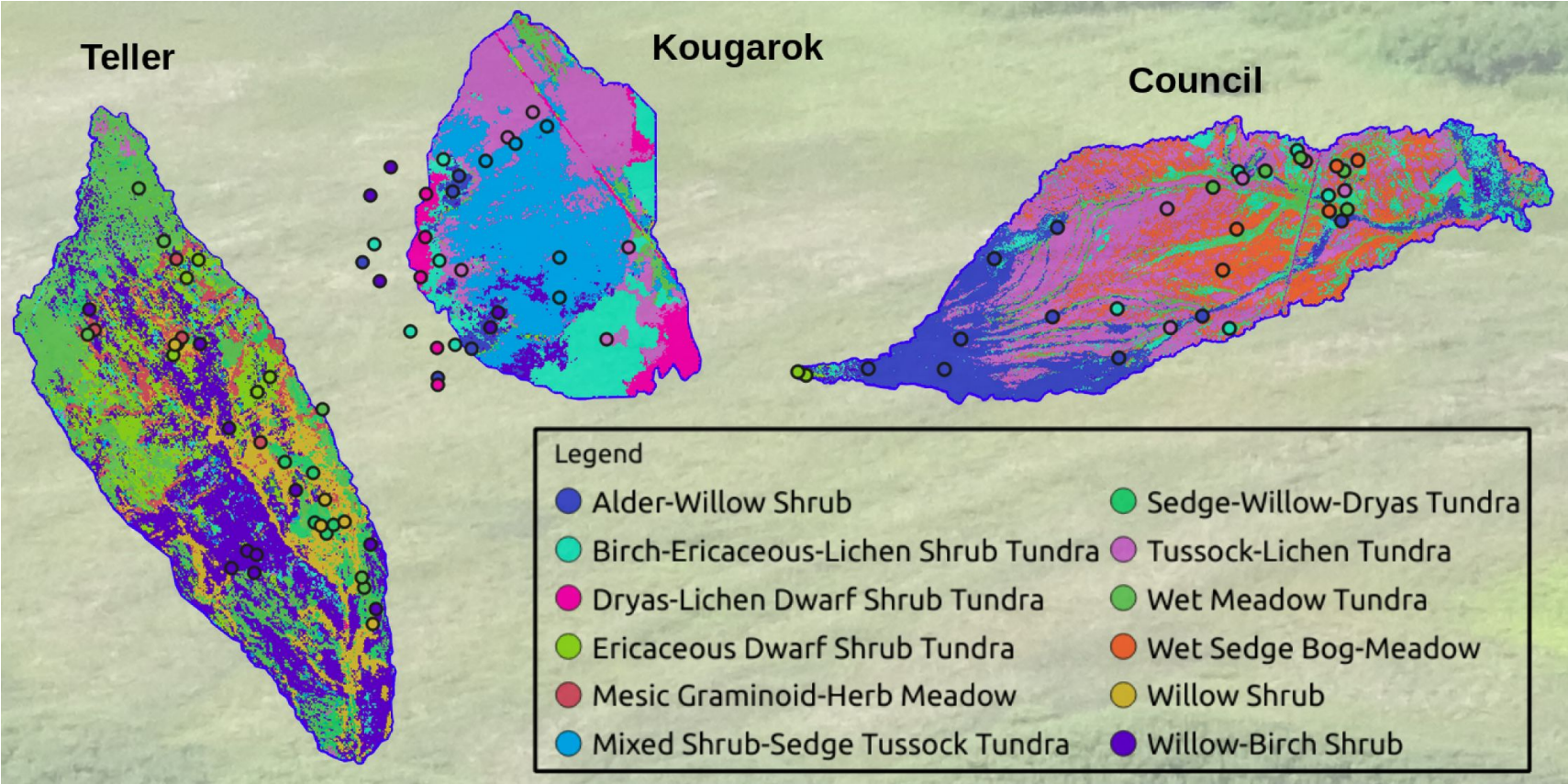
From MODIS "Hotspots" from 2002–2018

Arctic Vegetation Mapping from Multi-Sensor Fusion

Using Hyperion Multispectral and IfSAR-derived Digital Elevation Model
Trained with Alaska Existing Vegetation Ecoregions (AKEVT)



Watershed-Scale Plant Communities Determined from DNN and AVIRIS-NG



The logo is a white hexagonal shape with a green border and four small white hexagons at the corners. Inside, the text 'AI FOR SCIENCE TOWN HALL' is written in green, with 'AI' in a large font and 'FOR SCIENCE TOWN HALL' in a smaller font below it.

AI FOR SCIENCE TOWN HALL

Earth and Environmental Sciences

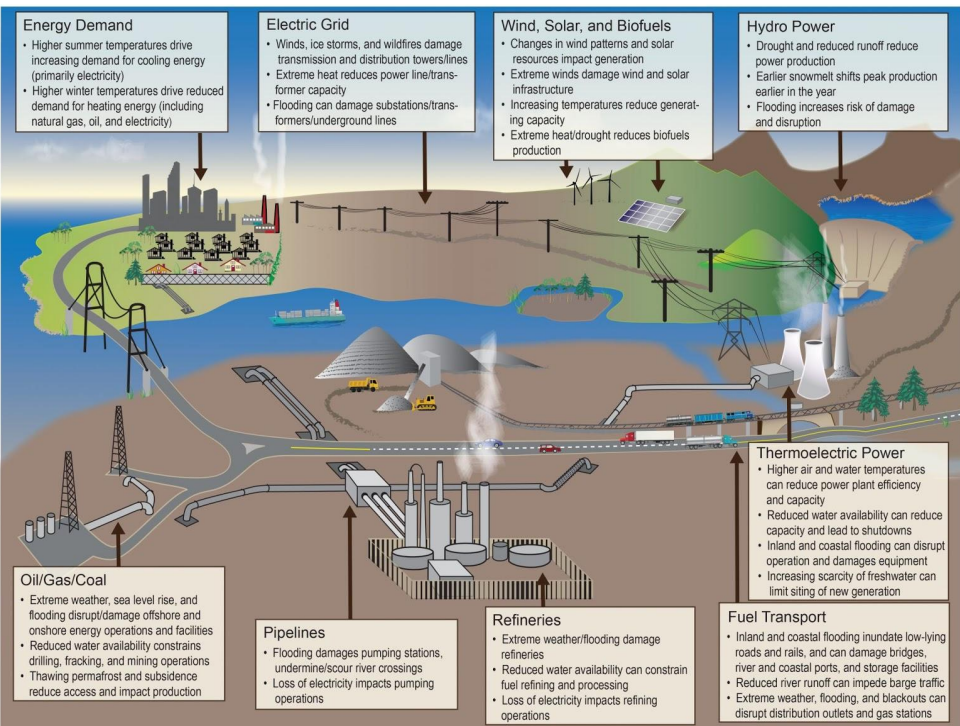
Forrest M. Hoffman (ORNL),
Rao Kotamarthi (ANL),
Haruko Wainwright (LBNL),
and the EES Writing Team



U.S. DEPARTMENT OF
ENERGY

Office of
Science

Grand Challenge #1



Project environmental risk and develop resiliency in a changing environment

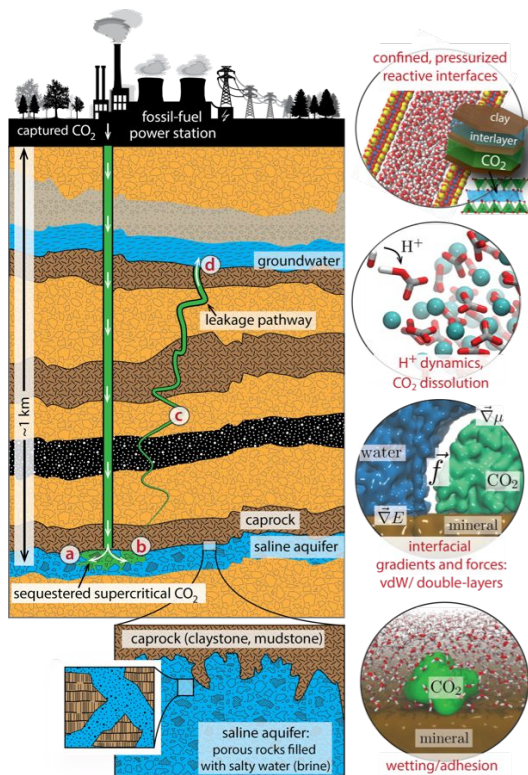
- Increasing frequency of weather extremes and changing environment pose risks to energy infrastructure and the built environment
- Sparse observations and inadequate model fidelity limit the ability to identify vulnerability, mitigate risks, and respond to disasters

Grand Challenge #1

- New tools are needed to accelerate projection of weather extremes and impacts on energy infrastructure
- Building resiliency to address evolving risks will benefit from integration of smart sensing systems, built-for-purpose models, ensemble forecasts to quantify uncertainty, and dynamic decision support systems for critical infrastructure



Grand Challenge #2

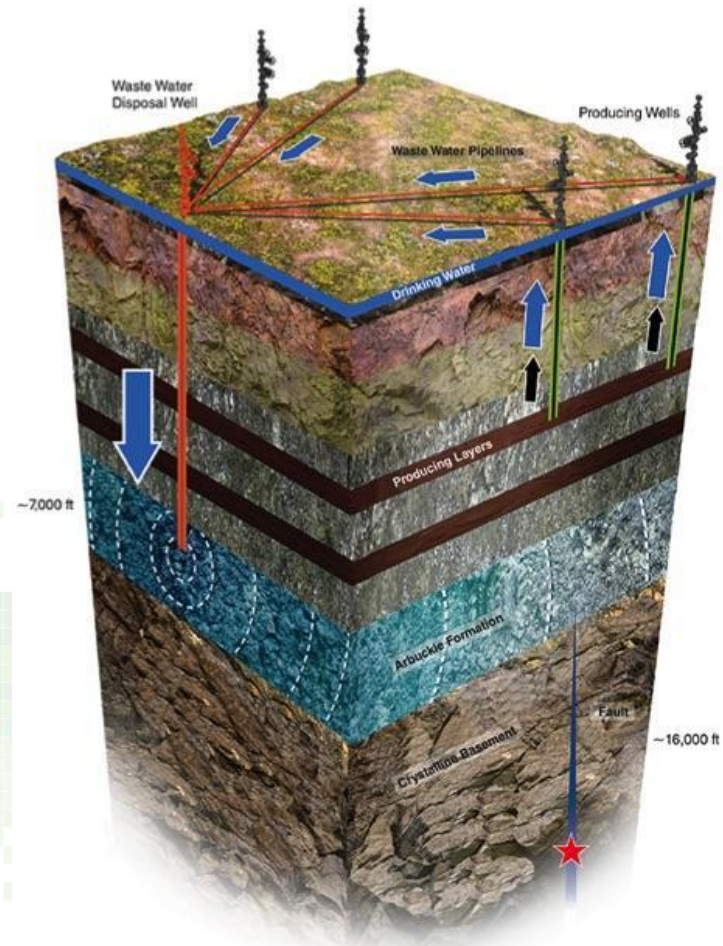


Characterize and modify subsurface conditions for responsible energy production, CO₂ storage, and contaminant remediation

- National energy security and transition to renewable energy resources relies on utilization of subsurface reservoirs for energy production, carbon storage, and spent nuclear fuel storage
- Subsurface data are uncertain, disparate, diverse, sparse, and affected by scaling issues
- Subsurface process models are incomplete, uncertain, and frequently unreliable for prediction

Grand Challenge #2

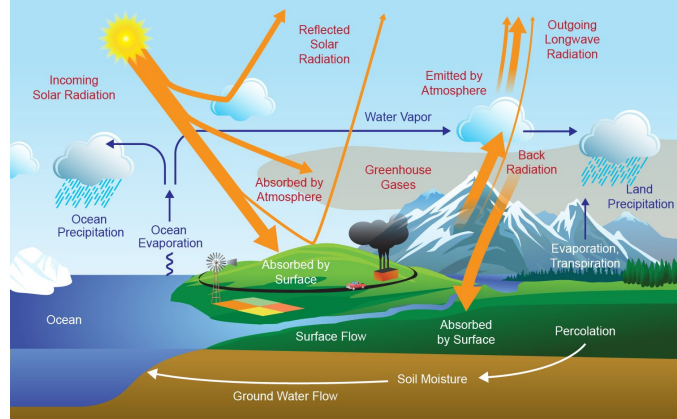
- We need to substantially increase hydrocarbon extraction efficiency, discover and exploit hidden geothermal resources, reduce induced seismicity and other impacts, improve geologic CO₂ storage, and predict long-term fate and transport of contaminants
- Mitigating risks requires improved subsurface characterization and assimilation of real-time data streams into predictive models of geological and ecological processes



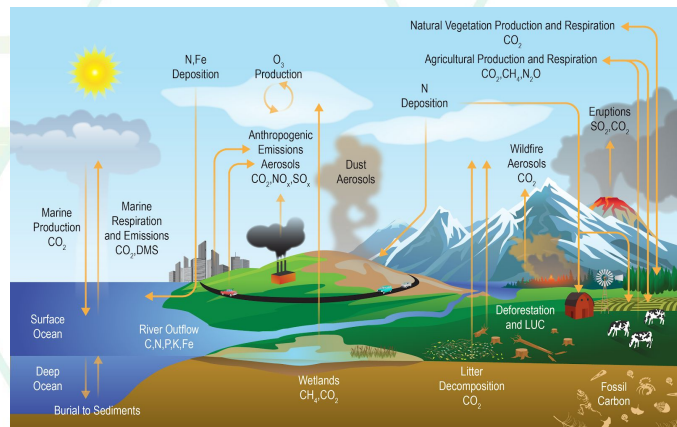
Grand Challenge #3

Develop a predictive understanding of the Earth system under a changing environment

- To advance the nation's energy and infrastructure security, a foundational scientific understanding of complex and dynamic hydrological, biological, and geochemical processes and their interactions is required (across atmosphere, ocean, land, ice)
- Knowledge must be incorporated into Earth system models to project future climate conditions for various scenarios of population, socioeconomics, and energy production and use



Energy & Water Cycles

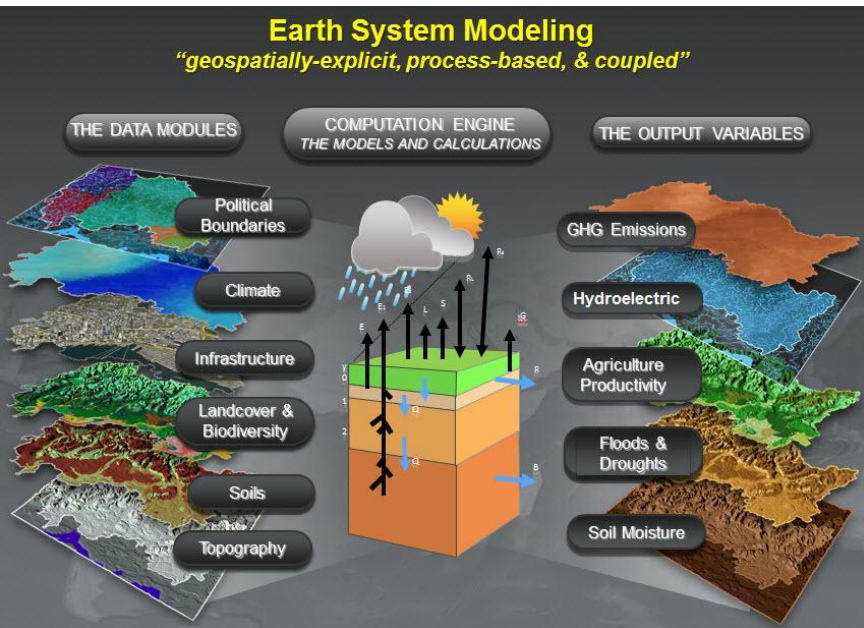


Carbon & Biogeochemical Cycles

Washington DC Town Hall

October 22-23

Grand Challenge #3

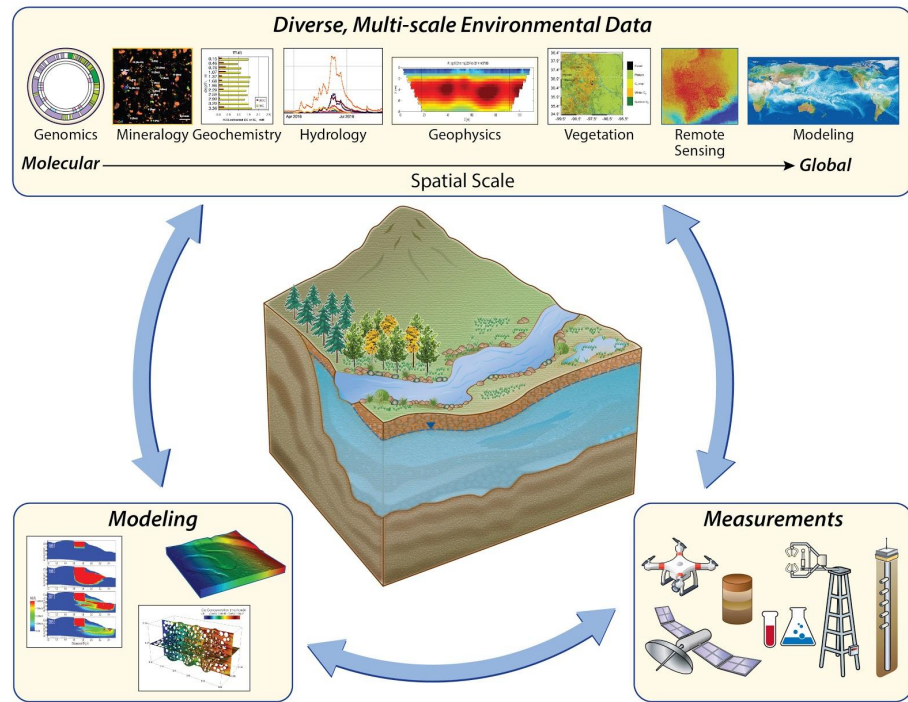


- Accurate predictions are needed to quantify changes in atmospheric and ocean circulation and weather extremes, to close the carbon cycle, and to understand responses and feedbacks of human, terrestrial, and marine ecosystems to environmental change
- Advances in genomics and bioscience data need to be leveraged to provide detailed understanding of plant–microbial interactions and their adaptations and feedbacks to the changing environment

Grand Challenge #4

Ensure global water security under a changing environment

- Water resources are critical for energy production, human health, food security, and economic prosperity
- Water availability and water quality are impacted by environmental change, weather extremes, and disturbances such as wildfire and land use change



Washington DC Town Hall
October 22-23

Grand Challenge #4

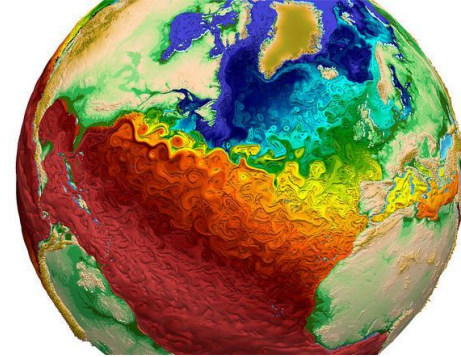


- Methods are needed to integrate disparate and diverse multi-scale data with models of watersheds, rivers, and water utility infrastructure
- Predictions of water quality and quantity require data-driven models and smart sensing systems
- Water resource management must account for changes in weather extremes, population, and economic growth

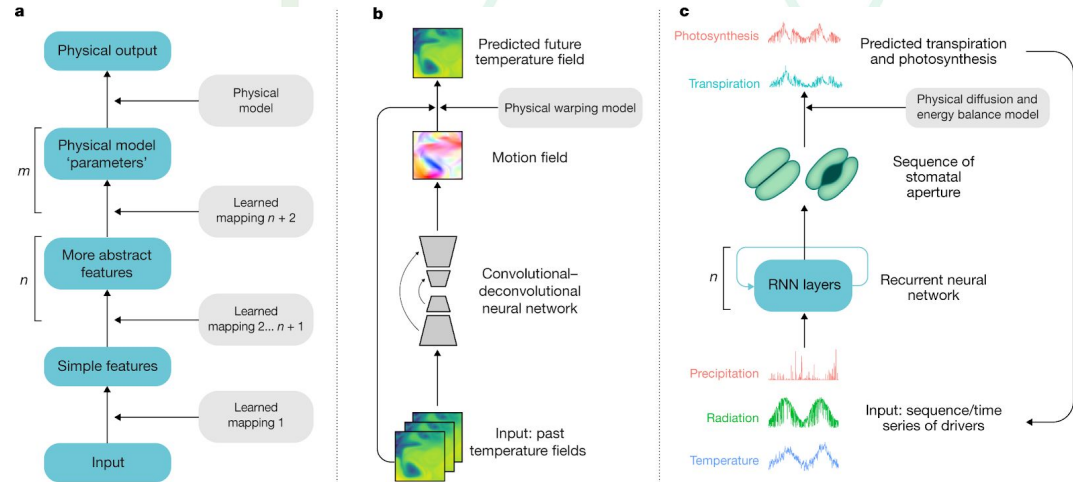
Accelerating Development

The near-term (5–10 years) priorities are to:

- Develop hybrid process-based/AI modeling frameworks for Exascale systems
- Develop strategies for mapping hybrid components on GPU/CPU based on computational density and communications patterns
- Develop physics / chemistry / biology-constrained ML
- Develop explainable AI and ML methods for hypothesis generation and testing



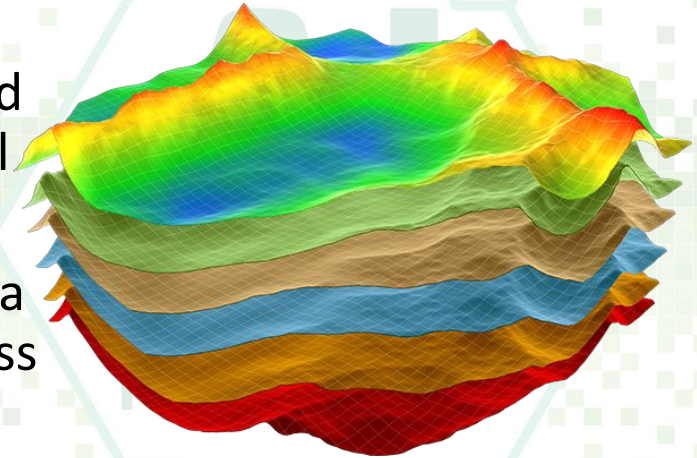
Hybrid Approaches to Earth Science Simulation (Reichstein et al., 2019)



Washington DC Town Hall
October 22-23

Expected Outcomes

- Model testbeds and surrogate models are expected to yield insights into process understanding across all Grand Challenges
- Data-driven and physics-constrained hybrid models are expected to stimulate new discovery and bridge space and time scales
- Integrated models of Earth system processes and energy/built infrastructure will enhance national energy and water security through simulation
- AI methods will enable effective use of large data streams for energy production, predictive process understanding, and environmental resiliency



Washington DC Town Hall
October 22-23