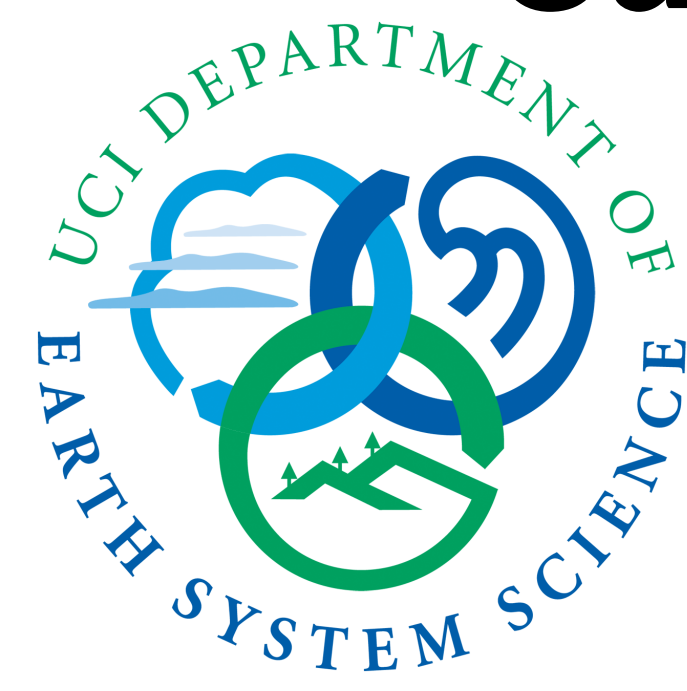


# Causes and Implications of Persistent Atmospheric Carbon Dioxide Biases in Earth System Models

Forrest M. Hoffman<sup>1,2</sup>, James T. Randerson<sup>1</sup>, Vivek K. Arora<sup>3</sup>, Qing Bao<sup>4</sup>, Katharina D. Six<sup>5</sup>, Patricia Cadule<sup>6</sup>, Duoying Ji<sup>7</sup>, Chris D. Jones<sup>8</sup>, Michio Kawamiya<sup>9</sup>, Samar Khatiwala<sup>10</sup>, Keith Lindsay<sup>11</sup>, Atsushi Obata<sup>12</sup>, Elena Shevliakova<sup>13</sup>, Jerry F. Tjiputra<sup>14</sup>, Evgeny M. Volodin<sup>15</sup>, Tongwen Wu<sup>16</sup>



<sup>1</sup>Department of Earth System Sciences, University of California, Irvine, California 92697, USA; <sup>2</sup>Computational Earth Sciences Group, Oak Ridge National Laboratory, Oak Ridge, Tennessee 37831, USA; <sup>3</sup>Canadian Centre for Climate Modelling and Analysis, Meteorological Service of Canada, Victoria, BC, V8W 3V6, Canada; <sup>4</sup>State Key Laboratory of Numerical Modeling for Atmospheric Sciences and Geophysical Fluid Dynamics, Institute of Atmospheric Physics, Chinese Academy of Sciences, Beijing 100029, China; <sup>5</sup>Max Planck Institute for Meteorology, Bundesstraße 53, 20146 Hamburg, Germany; <sup>6</sup>Institut Pierre Simon Laplace, Laboratoire des Sciences du Climat et de l'Environnement, 91191 Gif sur Yvette Cedex, France; <sup>7</sup>State Key Laboratory of Earth Surface Processes and Resource Ecology, College of Global Change and Earth System Science, Beijing Normal University, Beijing 100875, China; <sup>8</sup>Hadley Centre, U.K. Met Office, Exeter, EX1 3PB, United Kingdom; <sup>9</sup>Research Institute for Global Change, Japan Agency for Marine-Earth Science and Technology, Yokosuka-city, Kanagawa, Japan; <sup>10</sup>Lamont Doherty Earth Observatory, Columbia University, Palisades, New York 10964, USA; <sup>11</sup>Climate & Global Dynamics Division, National Center for Atmospheric Research, Boulder, Colorado 80507, USA; <sup>12</sup>Meteorological Research Institute, Japan Meteorological Agency, Tsukuba-city, Ibaraki, Japan; <sup>13</sup>Geophysical Fluid Dynamics Laboratory, Princeton University, Princeton, New Jersey 08540, USA; <sup>14</sup>Uni Climate, Uni Research, Allegetun 70, 5007 Bergen, Norway; <sup>15</sup>Institute of Numerical Mathematics, Russian Academy of Science, Moscow, 119333, Russia; <sup>16</sup>Climate System Modeling Division, Beijing Climate Center, China Meteorological Administration, Beijing 100081, China.

## Abstract

The strength of feedbacks between a changing climate and future CO<sub>2</sub> concentrations are uncertain and difficult to predict using Earth System Models (ESMs). We analyzed emissions-driven simulations—in which atmospheric CO<sub>2</sub> levels were computed prognostically—for historical (1850–2005) and future periods (RCP 8.5 for 2006–2100) produced by 15 ESMs for the Fifth Phase of the Coupled Model Intercomparison Project (CMIP5). Comparison of ESM prognostic atmospheric CO<sub>2</sub> over the historical period with observations indicated that ESMs, on average, had a small positive bias in predictions of contemporary atmospheric CO<sub>2</sub>. A key driver of this persistent bias was weak ocean carbon uptake exhibited by the majority of ESMs, based on comparisons with observations of ocean and atmosphere anthropogenic carbon inventories. We exploited a significant linear relationship found between the magnitude of contemporary and future atmospheric CO<sub>2</sub> levels to create a contemporary CO<sub>2</sub> tuned model (CCTM) estimate of the trajectory for the 21<sup>st</sup> century. The CCTM yielded CO<sub>2</sub> estimates of 600 ± 14 ppm at 2060 and 947 ± 35 ppm at 2100, which were 21 ppm and 32 ppm below the multi-model mean during these two time periods. Uncertainty estimates derived from this approach were almost 6 times smaller at 2060 and almost 5 times smaller at 2100 than those from the ESM ensemble. The CCTM also significantly narrowed the range of CO<sub>2</sub>-induced radiative forcing and temperature increases during the remainder of the 21<sup>st</sup> century. Because many processes contributing to contemporary carbon cycle biases persist over decadal timescales, our analysis suggests uncertainties in future climate scenarios may be considerably reduced by tuning models to the long-term time series of CO<sub>2</sub> from Mauna Loa and other atmospheric monitoring stations.

## Description of Models

Table 1: Models that generated output used in this study.

Model	Modeling Center (or Group)	Atmosphere	Component Models and Resolutions	Sea Ice
BCC-CSM1.1	Beijing Climate Center, China Meteorological Administration, CHINA	AGCM2.1 (2.875° × 2.875°, L26)	BCC-AVIM1.0 (2.875° × 2.875°, L26)	MOM4 L40 SIS (1° × (1-1/2)°)
BCC-CSM1.1(m)	Beijing Climate Center, China Meteorological Administration, CHINA	AGCM2.2 (1.125° × 1.125°, L26)	BCC-AVIM1.0 (1.125° × 1.125°, L26)	MOM4 L40 SIS (1° × (1-1/2)°)
BNU-ESM1	Beijing Normal University, CHINA	CAM3.5 (2.875° × 2.875°, L26)	CoLM3 & BNUGWV (C/N) (2.875° × 2.875°, L10)	MOM4p1 & IBCG (1° × (1-1/2)°)
CanESM2	Canadian Centre for Climate Modelling and Analysis, CANADA	CanAM4 (2.81° × 2.81°, L35)	CLASS2.7 & CTEM1 (2.81° × 2.81°, L35)	CanSIM1 (2.81° × 2.81°, L40)
CESM1-BGC	Community Earth System Model Contributors, NSF-DOE-NCAR, USA	CAM4 (0.9° × 1.25°, L30)	CM4 & POP2 & NPZD (0.9° × 1.25°, L30)	CICE4 (1° × (1-1/2)°)
FGOALS-S2.0	LASG, Institute of Atmospheric Physics, CAS, CHINA	SAMIL2.4.7 (1.25° × 1.25°, L26)	CLM3 & VEGAS2.0 (1.25° × 1.25°, L26)	LICOM2.0 (1° × (1-1/2)°)
GFDL-ESM2g	NOAA Geophysical Fluid Dynamics Laboratory, USA	AM2 (2° × 2.5°, L24)	LM3 (2° × 2.5°, L24)	MOM4 SIS (1° × (1-1/2)°)
HadGEM2-ES	Met Office Hadley Centre, UNITED KINGDOM	HadGAM2 & UKCA (1.25° × 1.875°, L38)	MOSES2 & TRIFFID (1.25° × 1.875°, L38)	HadGOM2 & diat-HadOCC (1° × (1-1/2)°)
INM-CM41	Institute for Numerical Mathematics, RUSSIA	(2° × 1.5°, L21)	(2° × 1.5°, L21)	(1° × 0.5°, L40)
IPSL-CM5A-LR	Institut Pierre-Simon Laplace, FRANCE	LMDZ4 (3.75° × 1.9°, L39)	ORCHIDEE (3.75° × 1.9°, L39)	ORCA2 & PISCES (2° × (2-1/2)°)
MIROC-ESM	Japan Agency for Marine-Earth Science and Technology, Atmosphere and Ocean Research Institute (University of Tokyo), and National Institute for Environmental Studies, JAPAN	MIROC-AGCM (2.875° × 2.875°, L80)	MATSIRO & SEIB-DGVM (2.875° × 2.875°, L80)	COCO3.4 & NPZD (1.5° × 1°, L44)
MPI-ESM-LR	Max Planck Institute for Meteorology, GERMANY	ECHAM6 (2.81° × 2.81°, L47)	JSBACH (2.81° × 2.81°, L47)	MPIOM & HAMOCC (1.5° × 1.5°, L40)
MRI-ESM1	Meteorological Research Institute, JAPAN	GSMJUV (0.75° × 0.75°, L48)	HAL & MRI-LCCM2 (0.75° × 0.75°, L48)	MRI-COM3 (1° × 0.5°, L51)
NorESM1-ME	Norwegian Climate Centre, NORWAY	CAM4-Oslo (1.9° × 2.5°, L26)	CLM4 & MICOM (1.9° × 2.5°, L26)	HAMOCC & CICE4 (1° × (1-1/2)°)

<sup>1</sup>HadGEM2-ES output available for December 1850 through November 2099; annual atmospheric CO<sub>2</sub> obtained directly from Hadley Centre. <sup>2</sup>IPSL-CM5A-LR monthly atmospheric CO<sub>2</sub> obtained directly from IPSL. <sup>3</sup>MPI-ESM-LR provided three ensemble realizations and one ensemble realization. <sup>4</sup>GFDL-ESM2g and GFDL-ESM2m output available beginning January 2006. Atmospheric CO<sub>2</sub> mole fraction was computed from 3-dimensional output.

## Observations and Calculations

- We used an observationally based estimate of anthropogenic CO<sub>2</sub> uptake by the ocean, produced by Khatiwala et al. (2009, 2012) using a Green's function model for ocean tracer transport, in combination with observed atmospheric CO<sub>2</sub> and fossil fuel emission estimates to assess model biases in carbon accumulation in the atmosphere, ocean, and land reservoirs.
- We adopted a strategy similar to that of Hall and Qu (2006) to constrain future trends in atmospheric CO<sub>2</sub> using contemporary observations to create the CCTM.
- We employed an impulse response function to estimate temperature changes based on time-integrated changes in radiative forcing to evaluate the implications of model CO<sub>2</sub> biases.

## Contemporary Biases in Atmospheric CO<sub>2</sub>

### ESM Historical Atmospheric CO<sub>2</sub> Mole Fraction

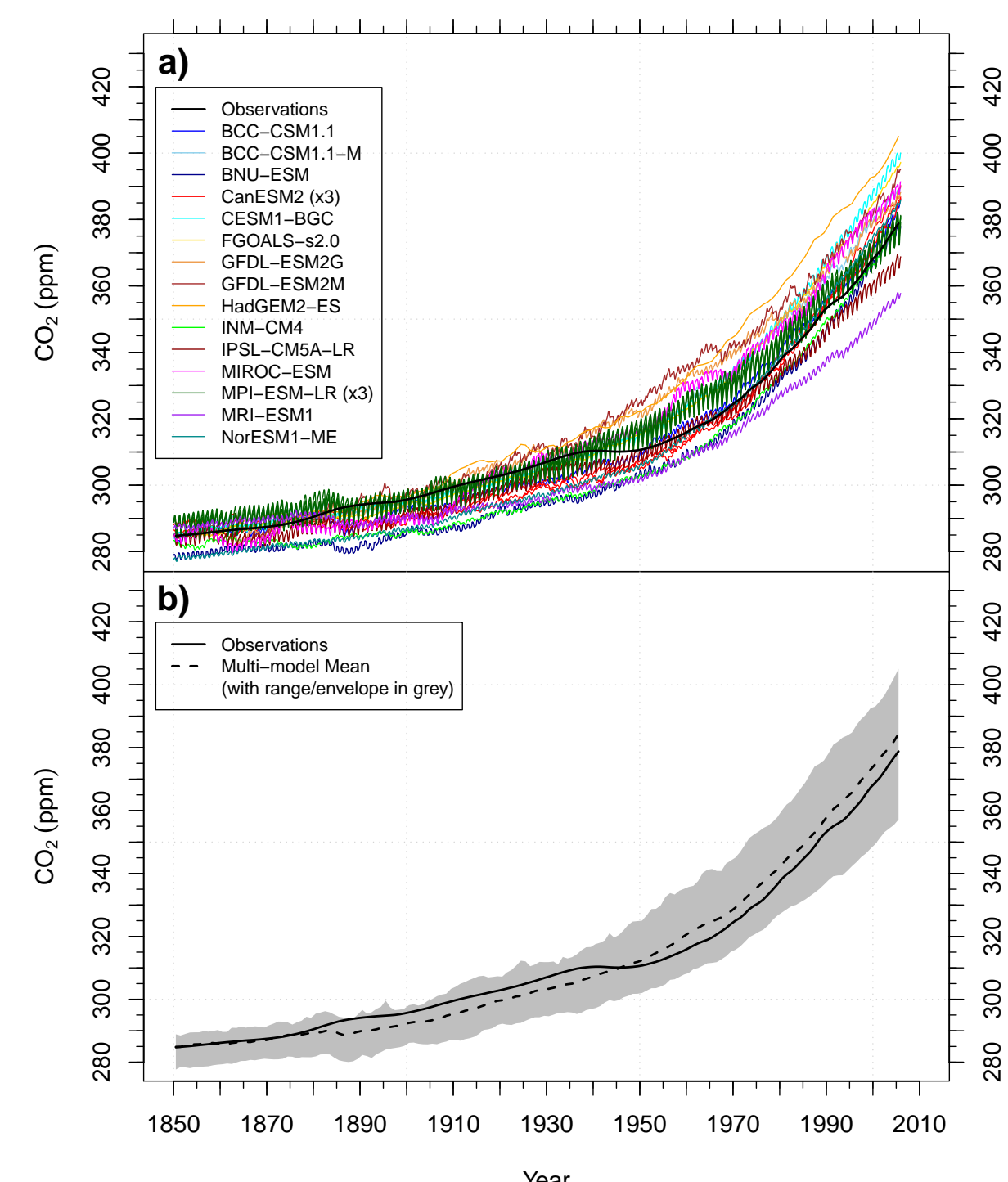


Figure 1: (a) Most ESMs exhibit a high bias in atmospheric CO<sub>2</sub> mole fraction. The predicted atmospheric CO<sub>2</sub> mole fraction for the 19 historical simulations shown here ranges from 357–405 ppm at the end of the CMIP5 historical period (1850–2005). (b) The multi-model mean is biased high from 1946 throughout the 20<sup>th</sup> century, ending 5.6 ppm above observations in 2005.

## ESM Historical Ocean and Land Carbon Accumulation

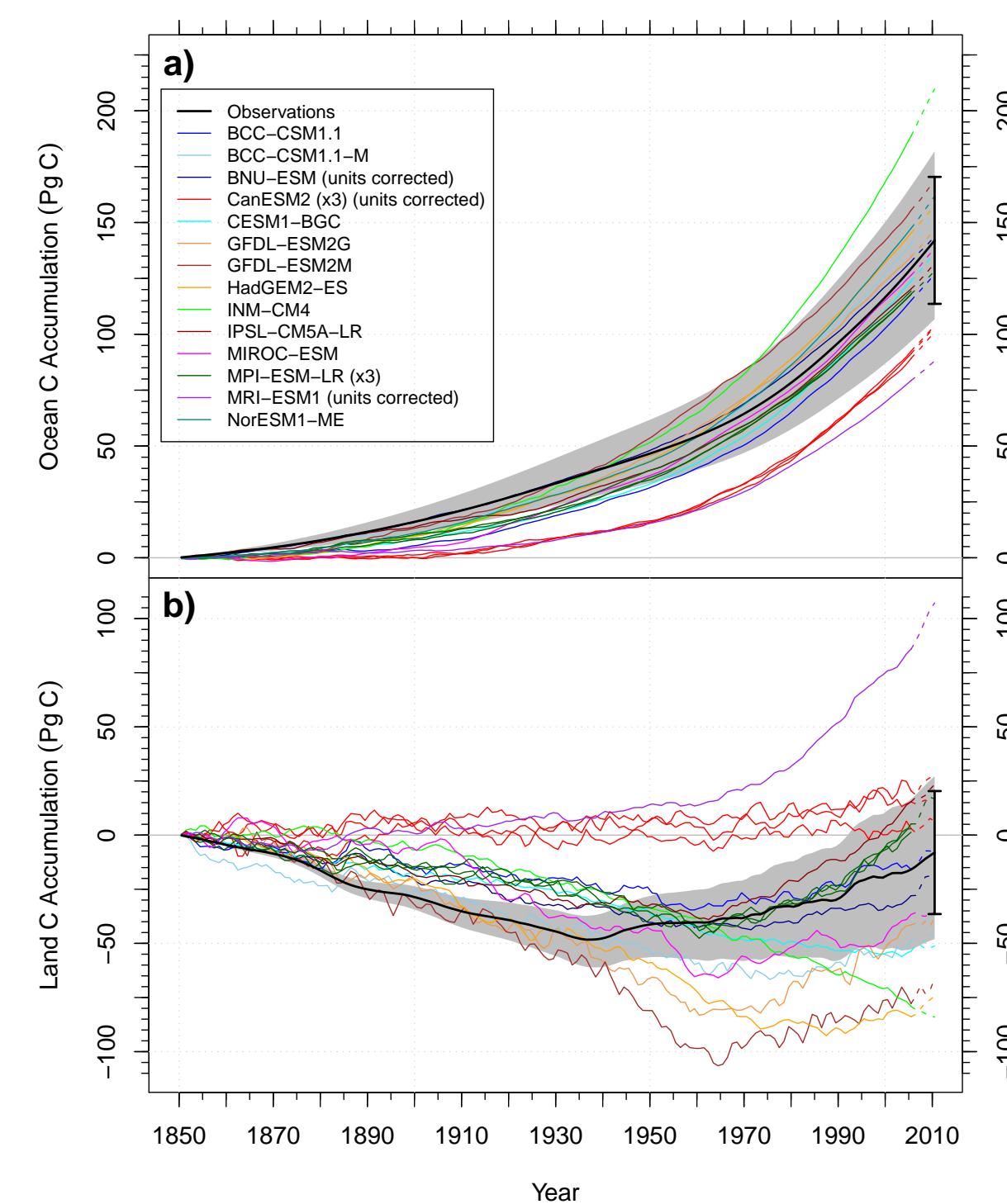


Figure 2: (a) Ocean and (b) land anthropogenic carbon inventories from CMIP5 models compared to estimates from Khatiwala et al. (2012). Most ESMs exhibit a low bias in ocean anthropogenic carbon accumulation from 1870–1930 as compared with adjusted estimates from Khatiwala et al. (2012). ESMs had a wide range of land carbon accumulation responses to increasing atmospheric CO<sub>2</sub> and land use change, ranging from a cumulative source of 84 Pg C to a cumulative sink of 107 Pg C in 2010.

## Causes and Implications of the Contemporary Bias

- A key driver of the persistent high bias was weak ocean carbon uptake exhibited by the majority of ESMs.
- The high atmospheric CO<sub>2</sub> bias for the multi-model mean produced radiative forcing that was too large and, consequently, an unrealistically high temperature increase during the historical period.
- We will see that the atmospheric CO<sub>2</sub> bias persists into the future, causing large and divergent model projections during the 21<sup>st</sup> century.

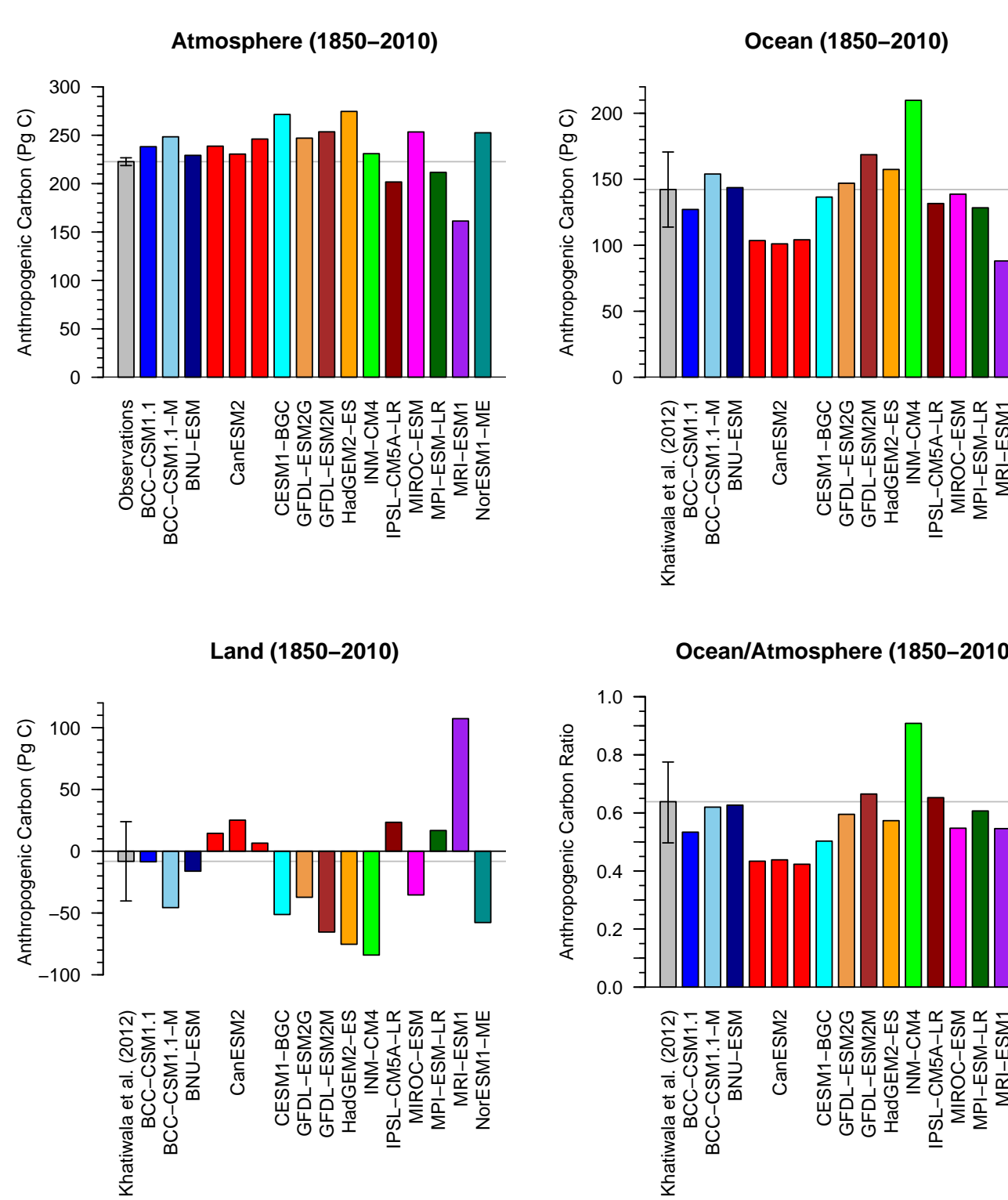


Figure 3: Reconstructed atmospheric CO<sub>2</sub> levels and observational based estimates of ocean carbon uptake from Khatiwala et al. (2012) provide constraints on carbon inventories in the ocean, and on land when combined with fossil fuel and atmospheric CO<sub>2</sub> observations. While ocean carbon accumulation appears adequate in some model results, ocean carbon accumulation in most ESMs show a low bias once normalized by atmospheric accumulation (lower right panel).

## Persistence of Biases into the Future

### Future vs. Contemporary Atmospheric CO<sub>2</sub> Mole Fraction

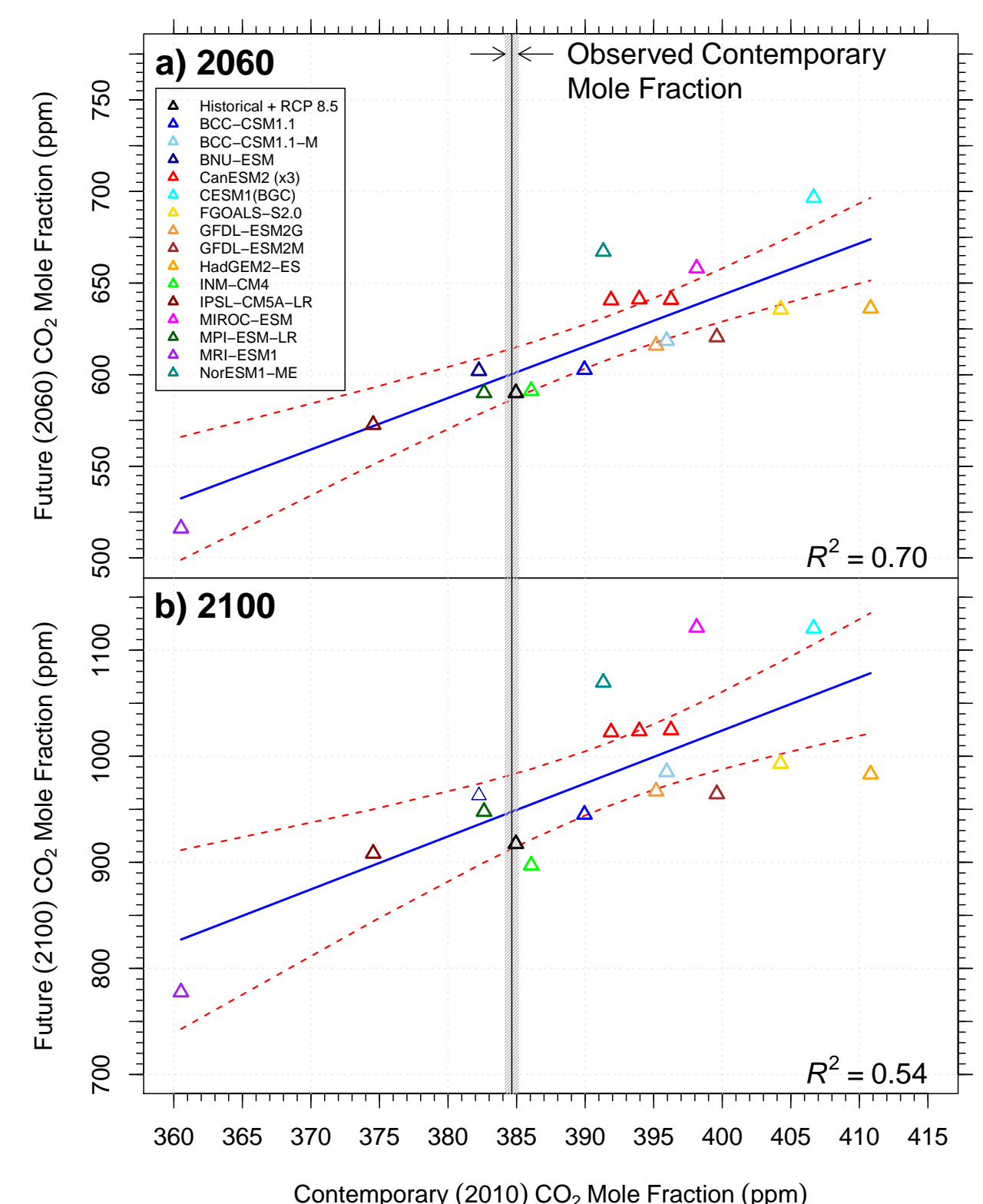


Figure 4: (a) Future (2060) vs. contemporary (2010) atmospheric CO<sub>2</sub> mole fraction fit for CMIP5 emissions-forced simulations of RCP 8.5, and (b) Future (2100) vs. contemporary (2010) atmospheric CO<sub>2</sub> mole fraction for the same set of model simulations. The observed atmospheric CO<sub>2</sub> mole fraction is represented by the vertical line at 384.6 ppm with an uncertainty range (±0.5 ppm) shown in gray. The linear regression model is represented by the blue line surrounded by red dashed lines indicating a 95% confidence interval.

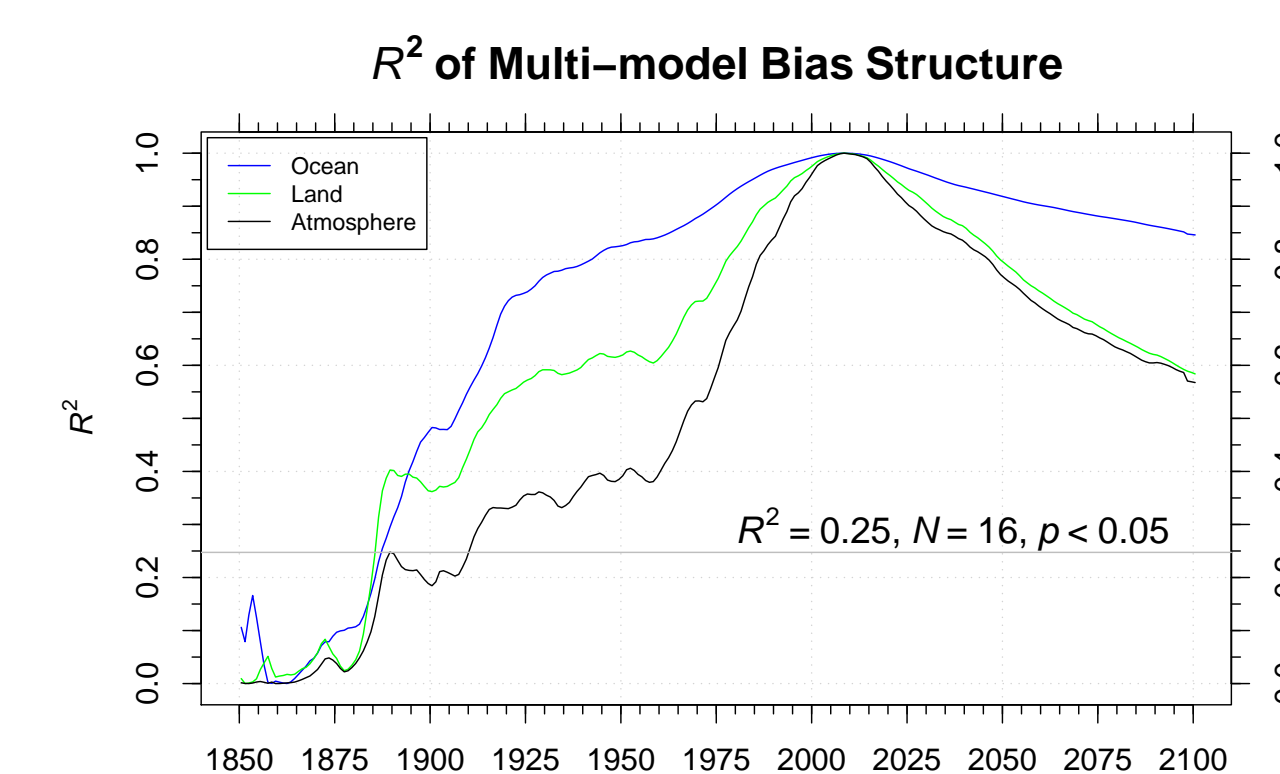


Figure 5: The coefficients of determination (R<sup>2</sup>) for the multi-model bias structure, from which the contemporary CO<sub>2</sub> tuned model (CCTM) was derived, relative to the set of CMIP5 model atmospheric CO<sub>2</sub> (black), ocean (blue), and land (green) predictions in 2010, defined as the 5-y mean for the period 2006–2010.

## Probability Density of CO<sub>2</sub> Mole Fraction

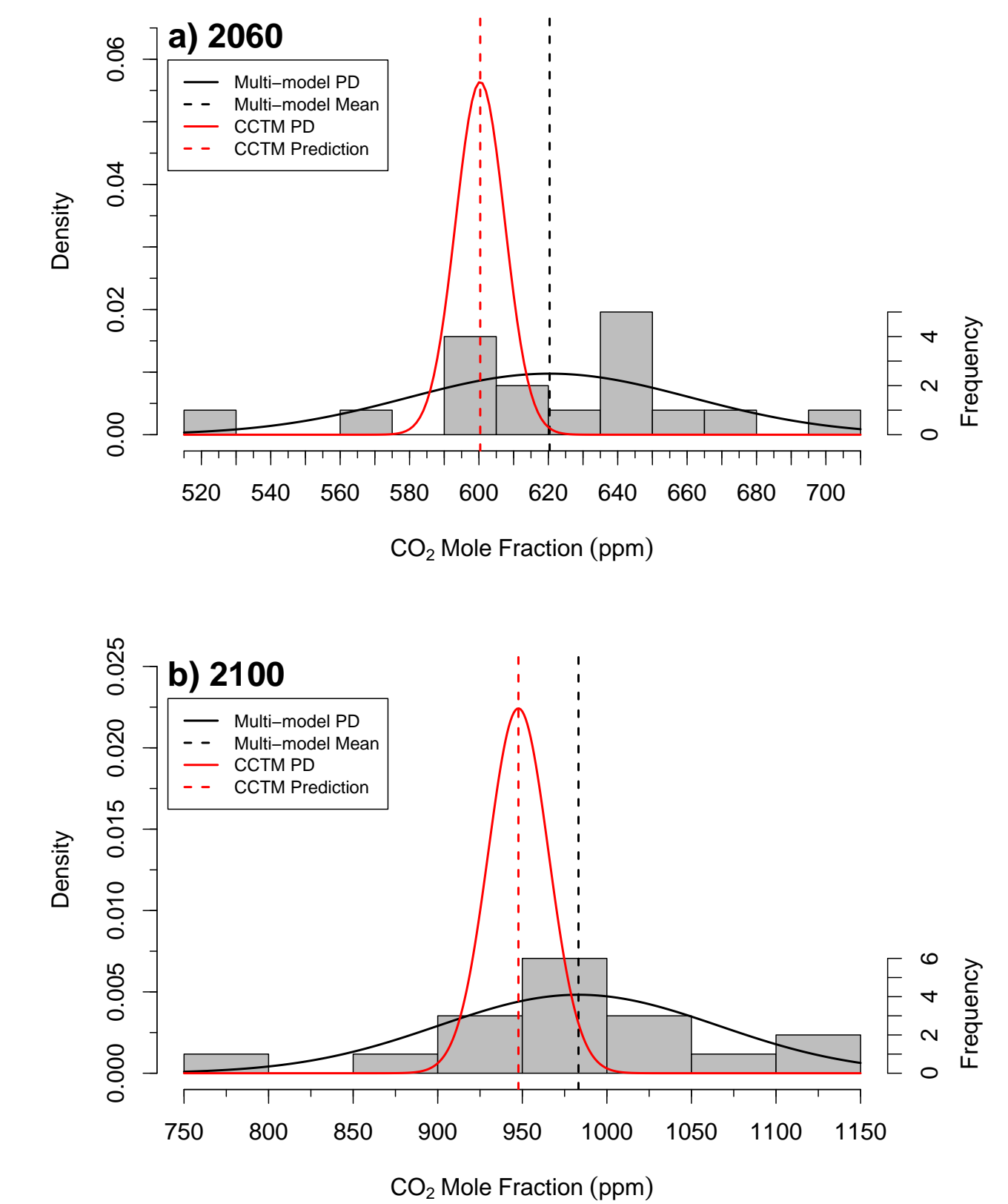


Figure 6: The probability density of CO<sub>2</sub> mole fraction predictions from the CCTM peaks lower than the probability density for multi-model mean for (a) 2060 and (b) 2100. In addition, the width of the probability density is much smaller for the CCTM, by almost a factor of 6 at 2060 and almost a factor of 5 at 2100, indicating a significant reduction in the range of uncertainty for the CCTM prediction.

## Future vs. Contemporary Ocean Accumulation

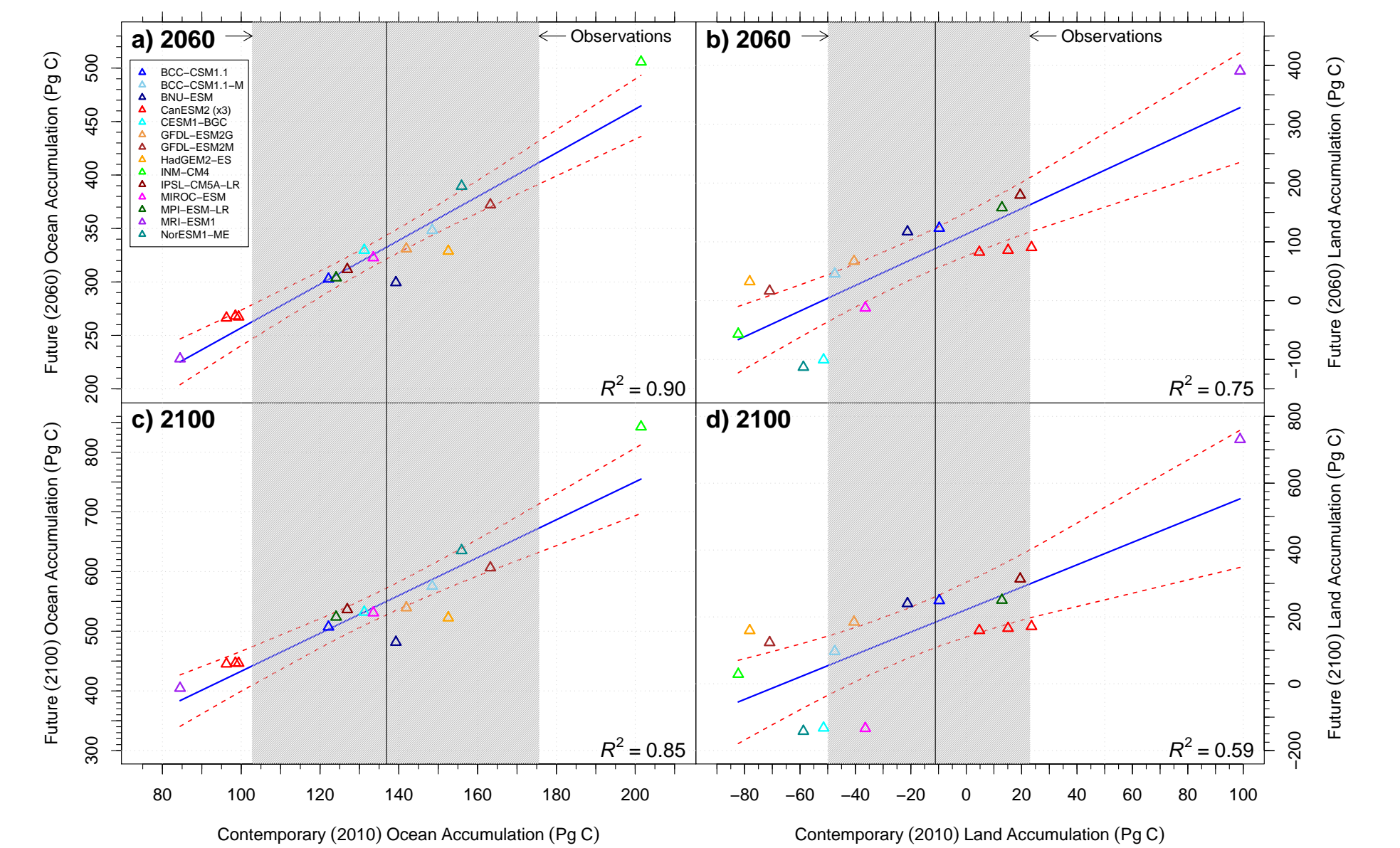


Figure 7: Future ((a) 2060 and (c) 2100) vs. contemporary (2010) ocean carbon accumulation for CMIP5 emissions-forced simulations of RCP 8.5, and corresponding plots for land carbon accumulation for the same periods ((b) and (d), respectively). Observed contemporary accumulation estimates are shown as vertical lines with an uncertainty range shown in gray. The linear regression model is represented by the blue line surrounded by red dashed lines indicating a 95% confidence interval.

## Implications of a Persistent CO<sub>2</sub> Bias

### Projections for Individual CMIP5 Models

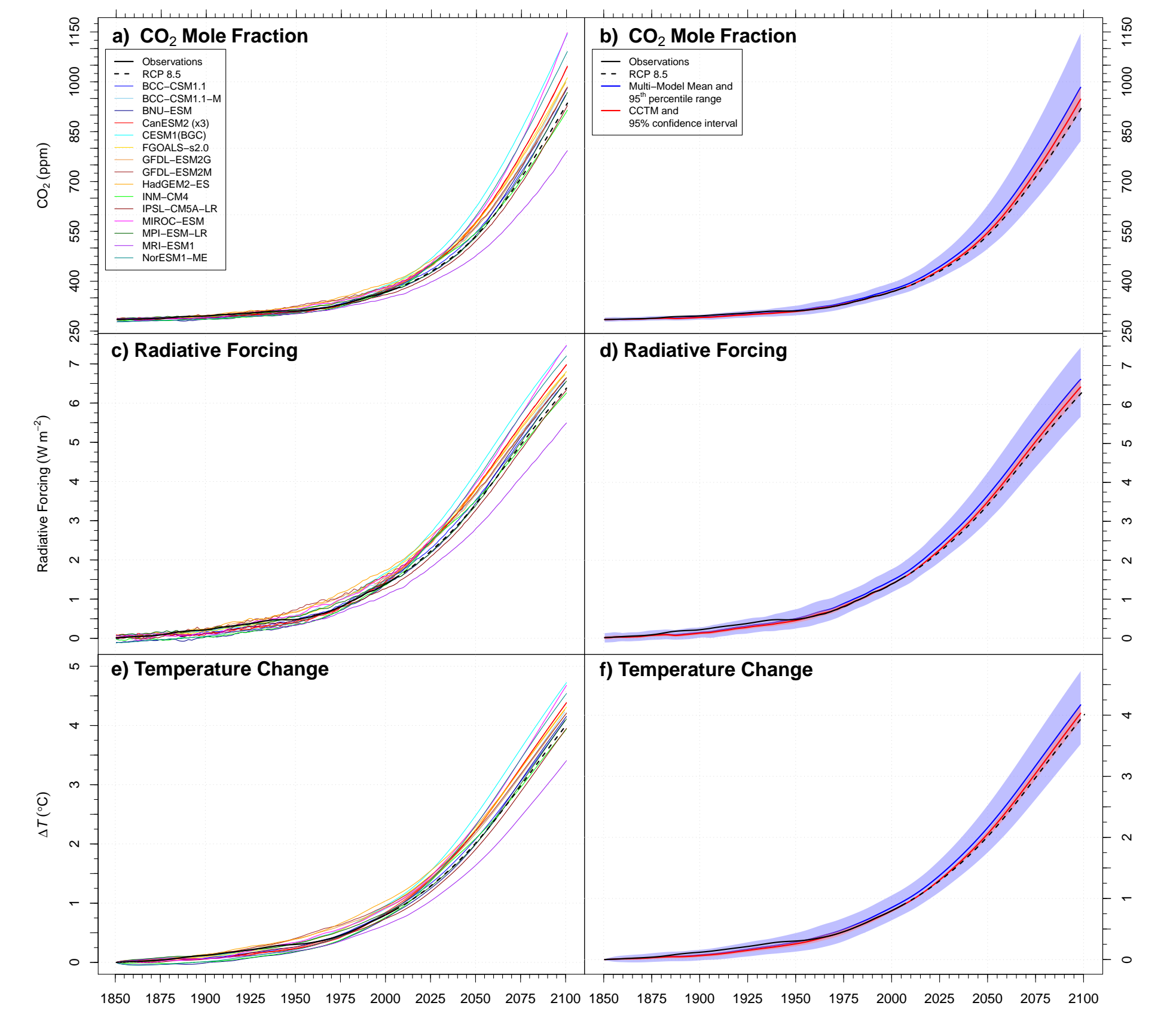


Figure 8: (a) CO<sub>2</sub> predictions for all CMIP5 models. (b) The contemporary CO<sub>2</sub> tuned model (CCTM) atmospheric CO<sub>2</sub> estimate compared to the CMIP5 multi-model mean trajectory. (c and d) Radiative forcing for all CMIP5 models and the CCTM. (e and f) Temperature changes for all CMIP5 models and the CCTM.

## Discussion and Conclusions

- Many of the processes that contribute to contemporary carbon cycle biases persist over decadal timescales.
- Terrestrial and ocean carbon accumulation compensated for one another within individual models (R = -0.86), reducing the bias in predicted atmospheric CO<sub>2</sub>.
- The CCTM estimates of atmospheric CO<sub>2</sub> were 21 ppm lower than the multi-model mean in 2060 and 32 ppm lower at 2100, suggesting that stabilization targets may be unnecessarily low.
- Uncertainty estimates derived from this approach were almost 6 times smaller at 2060 and almost 5 times smaller at 2100 than those from the ESM ensemble.
- Community-based model benchmarking (e.g., ILAMB) and model tuning could reduce biases and decrease multi-model spread of future predictions.

See oral presentation on Thursday, 6 June at 14:45, Room 305CD

## Acknowledgements

This research was sponsored by the Climate and Environmental Sciences Division (CESD) of the Biological and Environmental Research (BER) Program in the U.S. Department of Energy Office of Science and the National Science Foundation (AGS-1048890). This research used resources of the National Center for Computational Sciences (NCCS) at Oak Ridge National Laboratory (ORNL), which is managed by UT-Battelle, LLC, for the U.S. Department of Energy under Contract No. DE-AC05-00OR22725. CDJ was supported by the Joint DECC/Defra Met Office Hadley Centre Climate Programme (GA01101). The National Center for Atmospheric Research is sponsored by the National Science Foundation. We acknowledge the World Climate Research Programme's Working Group on Coupled Modelling, which is responsible for CMIP, and we thank the climate modeling groups (listed in Table 1 of this poster) for producing and making available their model output. For CMIP the U.S. Department of Energy's Program for Climate Model Diagnosis and Intercomparison provides coordinating support and led development of software infrastructure in partnership with the Global Organization for Earth System Science Portals.