

Geospatiotemporal Data Mining in an Early Warning System for Forest Threats in the United States

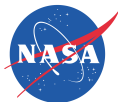
**Forrest M. Hoffman[†], Richard T. Mills[†], Jitendra Kumar[†],
Srinivasa S. Vulli[†], and William W. Hargrove[‡]**

[†]Oak Ridge National Laboratory and

[‡]Eastern Forest Environmental Threat Assessment Center, USDA Forest Service

July 26, 2010

2010 IEEE International Geoscience and Remote Sensing
Symposium (IGARSS 2010) – Honolulu, Hawai'i

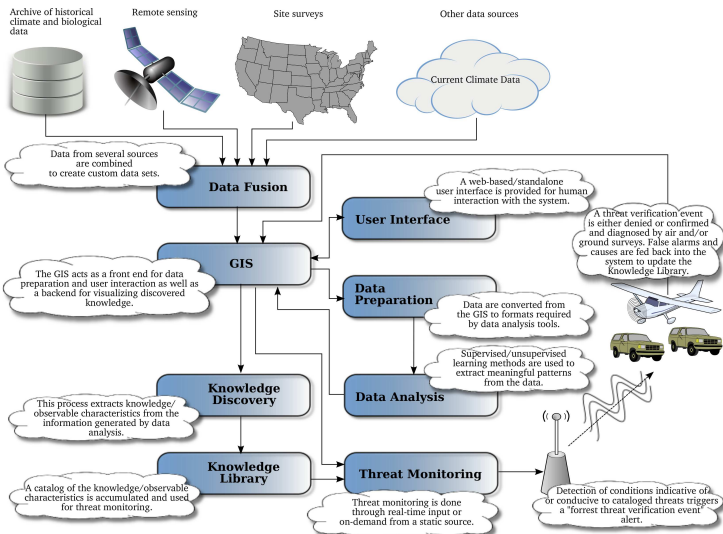


The USDA Forest Service, NASA Stennis Space Center, and DOE Oak Ridge National Laboratory are creating a system to monitor threats to U.S. forests and wildlands at two different scales:

- **Tier 1: Strategic** — An Early Warning System (EWS) that routinely monitors wide areas at coarser resolution, repeated frequently — a *change detection system* to produce alerts or warnings for particular locations may be of interest
- **Tier 2: Tactical** — Finer resolution airborne overflights and ground inspections of areas of potential interest — *Aerial Detection Survey (ADS)* monitoring to determine if such warnings become alarms

Tier 2 is largely in place, but Tier 1 is needed to optimally direct its labor-intensive efforts and discover new threats sooner.

Overview of the Forest Incidence Recognition and State Tracking (FIRST) System



Normalized Difference Vegetation Index (NDVI)

- NDVI exploits the strong differences in plant reflectance between red and near-infrared wavelengths to provide a measure of “greenness” from remote sensing measurements.

$$\text{NDVI} = \frac{(\sigma_{\text{nir}} - \sigma_{\text{red}})}{(\sigma_{\text{nir}} + \sigma_{\text{red}})} \quad (1)$$

- These spectral reflectances are ratios of reflected over incoming radiation, $\sigma = I_r/I_i$, hence they take on values between 0.0 and 1.0. As a result, NDVI varies between -1.0 and $+1.0$.
- Dense vegetation cover is 0.3–0.8, soils are about 0.1–0.2, surface water is near 0.0, and clouds and snow are negative.

MODIS MOD13 NDVI Product

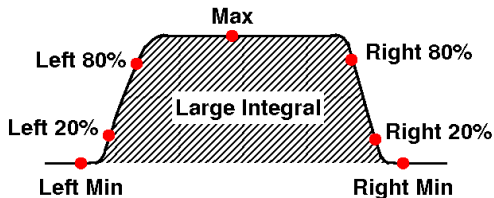
- The Moderate Resolution Imaging Spectroradiometer (MODIS) is a key instrument aboard the Terra (EOS AM, N→S) and Aqua (EOS PM, S→N) satellites.
- Both view the entire surface of Earth every 1 to 2 days, acquiring data in 36 spectral bands.
- The MOD 13 product provides Gridded Vegetation Indices (NDVI and EVI) to characterize vegetated surfaces.
- Available are 6 products at varying spatial (250 m, 1 km, 0.05°) and temporal (16-day, monthly) resolutions.
- The Terra and Aqua products are staggered in time so that a new product is available every 8 days.
- Results shown here are derived from the 16-day Terra MODIS product at 250 m resolution, processed by NASA Stennis Space Center.

- **Phenology** is the study of periodic plant and animal life cycle events and how these are influenced by seasonal and interannual variations in climate.
- FIRST is interested in deviations from the “normal” seasonal cycle of vegetation growth and senescence.
- NASA Stennis Space Center has developed a new set of National Phenology Datasets based on MODIS.
- Outlier/noise removal and temporal smoothing are performed, followed by curve-fitting and estimation of descriptive curve parameters.

Up-looking photos of a scarlet oak showing the timing of leaf emergence in the spring (Hargrove et al., 2009).



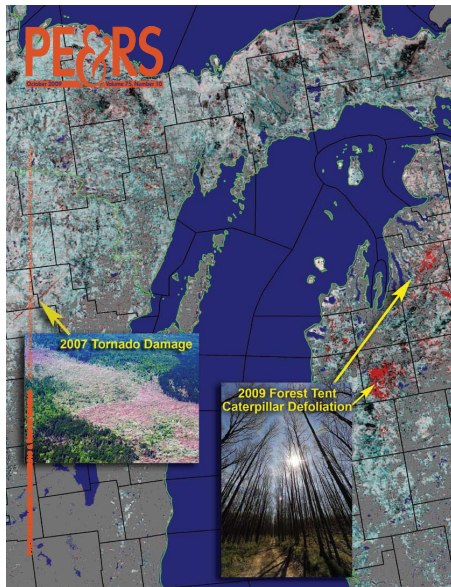
Idealized Phenology Curve



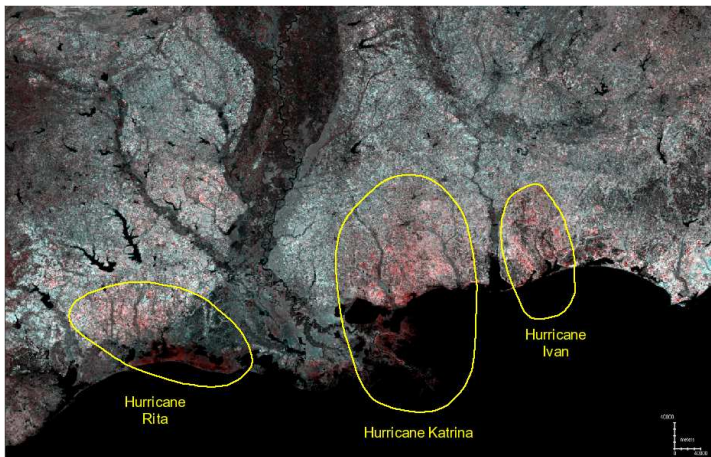
- An idealized seasonal NDVI curve is fit through data for each MODIS cell, and seven parameters are extracted.
- Each parameter results in two maps: one for the NDVI value and one for the time of the event.
- Cumulative NDVI shows the annual “greening” of the U.S.
- The Large Integral is strongly correlated with annual gross primary production (GPP) of the conterminous U.S. (CONUS).

- To detect vegetation disturbances, the current NDVI measurement is compared with the normal, expected baseline for the same location.
- Substantial decreases from the baseline represent potential disturbances.
- Any increases over the baseline may represent vegetation recovery.
- Maximum, mean, or median NDVI may provide a suitable baseline value.

June 10–23, 2009, NDVI is loaded into blue and green; maximum NDVI from 2001–2006 is loaded into red (Hargrove et al., 2009).

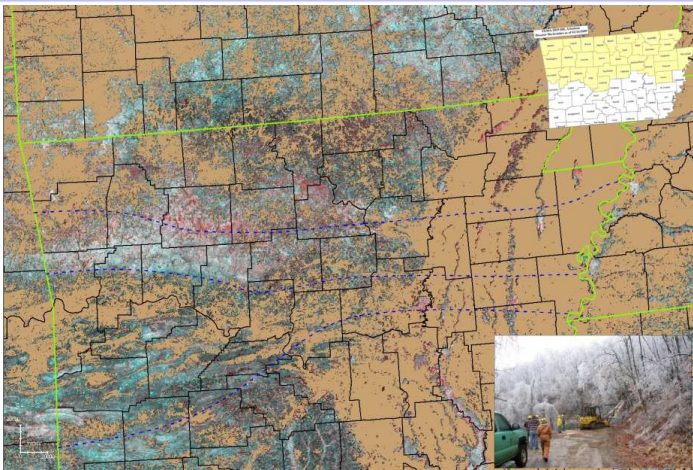


Three Hurricanes



Computed by assigning 2006 20% left value to green & blue, and 20% left from 2004 to red (Hargrove et al., 2009). Red depicts areas of reduced greenness, primarily east of storm tracks and in marshes.

Arkansas Ozarks Ice Storm, Jan. 26–29, 2009



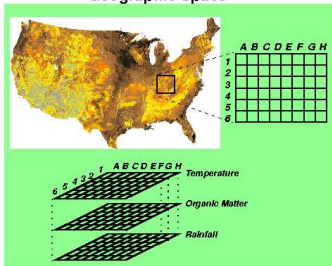
Computed by assigning 2009 max NDVI for June 10–July 15 into blue & green, and 2001–2006 max NDVI for June 10–July 27 into red. Storm resulted in 35,000 without power and 18 fatalities.

Data Mining for Change Detection

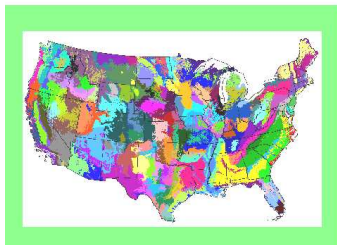
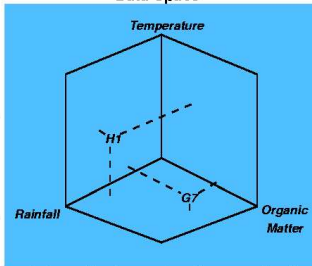
- Map arithmetic on selected parameters is good for studying the impact of known disturbances, but what is desired is an automated, unsupervised change detection system.
- A data mining approach, utilizing high performance computing (HPC) for the entire body of the very large, high resolution NDVI data history, appears to be the best approach.
- Hoffman and Hargrove previously employed a highly scalable *k*-means algorithm to automatically detect brine scars from hyperspectral remote sensing data (Hoffman, 2004) and for land surface phenology from monthly climatology and 17 years of 8 km NDVI from AVHRR (White et al., 2005).
- For only the current MODIS NDVI data for six years (2003–2008), 22 maps per year, at 250 m over the CONUS, single-precision data exceed 77 GB, requiring HPC resources.

Geospatiotemporal Data Mining

Geographic Space

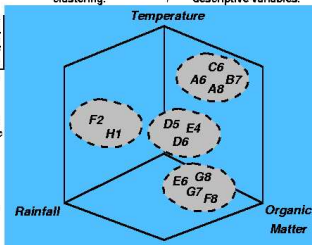


Data Space

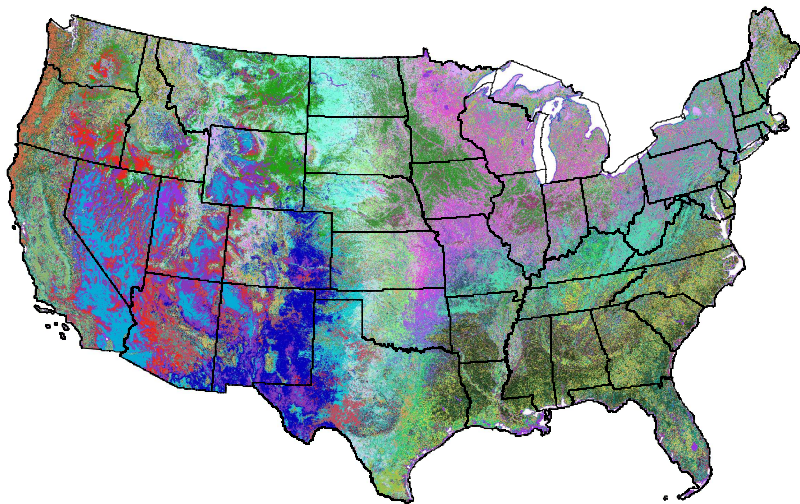


		A6	E6
H1	D5	A8	G7
F2	E4	B7	G8
	D6	C6	F8
	1	2	3
			4

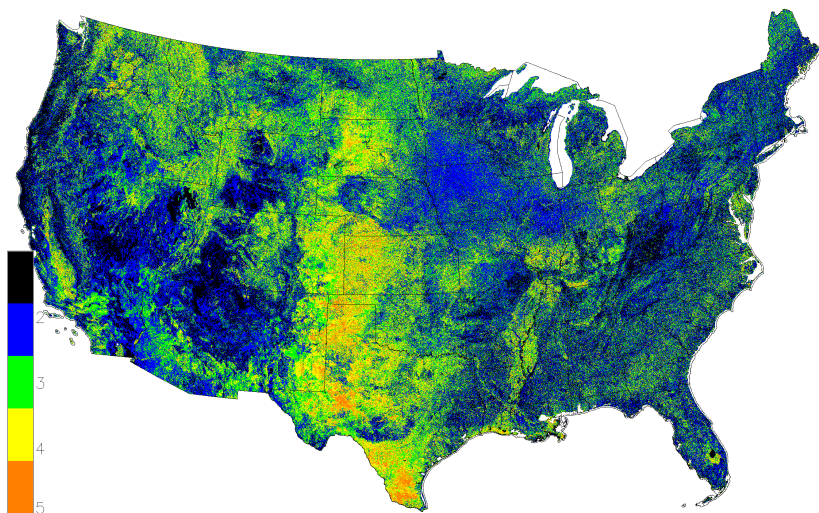
Cluster Bins



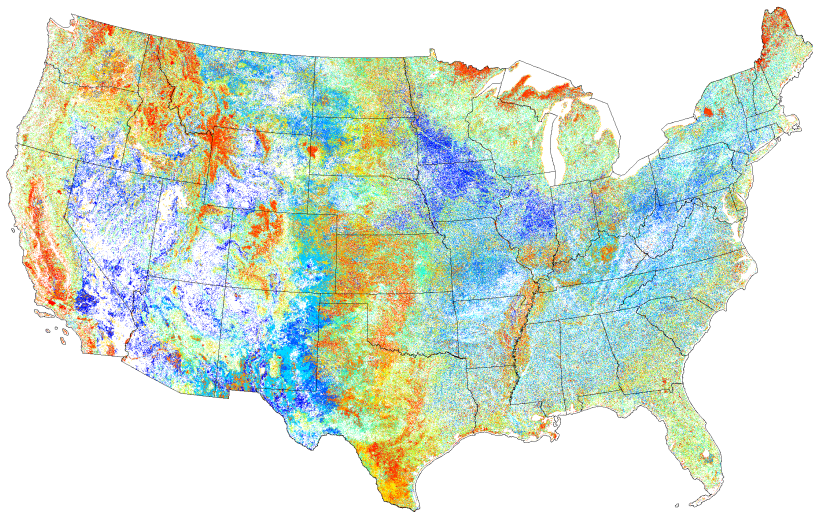
50 Phenoregions for Year 2008 (Clustering 2003–2008)



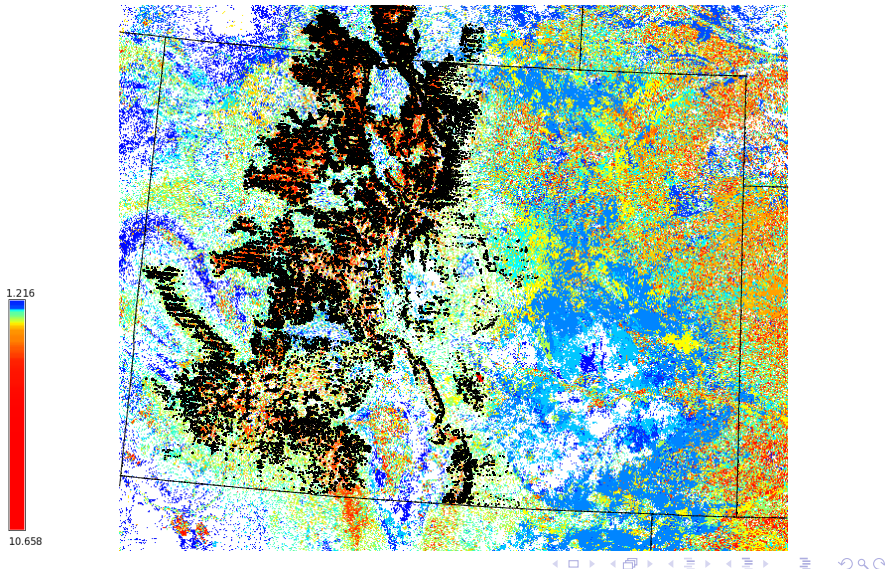
Cluster Persistence Map (2003–2008)



Cluster Transition Distances for (2008 – 2003)



Mountain Pine Beetle in Colorado for (2008 – 2003)



Conclusions and Future Work

- Initial results of geospatiotemporal cluster analysis of phenology from MODIS NDVI are promising, suggesting such analysis will be a key component in the FIRST early warning system.
- The enhanced, accelerated k -means clustering algorithm enables the analysis of very large, high resolution remote sensing data.
- Determining “normal” phenological patterns is difficult—due to interannual climate variability, spatially variable climate change trend, and relatively short satellite record—mortality events, like progressive Mountain Pine Beetle damage, are easily detected.
- The next step is to establish biome-specific thresholds based on interannual variability, obtain validation from ADS and ground surveys, and track and accumulate both loss and new growth for carbon accounting.
- Future work will build a library of phenostate transitions attributed to pests or pathogens for individual biomes, allowing the system to hypothesize about causes of future disturbances detected.

Acknowledgments

The authors wish to thank [Joseph P. Spruce](#) at the NASA Stennis Space Center for providing quality controlled NDVI maps generated from the MODIS MOD13 Collection 5 product.

This research was sponsored by the U.S. Department of Agriculture Forest Service, Eastern Forest Environmental Threat Assessment Center. This research used resources of the National Center for Computational Science at Oak Ridge National Laboratory, which is managed by UT-Battelle, LLC, for the U.S. Department of Energy under Contract No. DE-AC05-00OR22725.

References

- William W. Hargrove, Joseph P. Spruce, Gerald E. Gasser, and Forrest M. Hoffman. Toward a national early warning system for forest disturbances using remotely sensed phenology. *Photogramm. Eng. Rem. Sens.*, 75(10):1150–1156, October 2009.
- Forrest M. Hoffman. Analysis of reflected spectral signatures and detection of geophysical disturbance using hyperspectral imagery. Master's thesis, Department of Physics and Astronomy, University of Tennessee, Knoxville, November 2004.
- Michael A. White, Forrest M. Hoffman, William W. Hargrove, and Ramakrishna R. Nemani. A global framework for monitoring phenological responses to climate change. *Geophys. Res. Lett.*, 32(4):L04705, February 2005. doi:10.1029/2004GL021961.