

# Quantifying and Reducing Uncertainties Associated with Biogeochemical Feedbacks in Earth System Models

Forrest M. Hoffman<sup>1,2</sup>, Nathaniel O. Collier<sup>2</sup>, Jitendra Kumar<sup>3,2</sup>,  
Min Xu<sup>2</sup>, Cheng-En Yang<sup>1,2</sup>

<sup>1</sup>Department of Civil & Environmental Engineering, University of Tennessee Knoxville;

<sup>2</sup>Oak Ridge National Laboratory; <sup>3</sup>Bredesen Center, University of Tennessee Knoxville

September 12, 2017



# Biogeochemistry–Climate Feedbacks Research

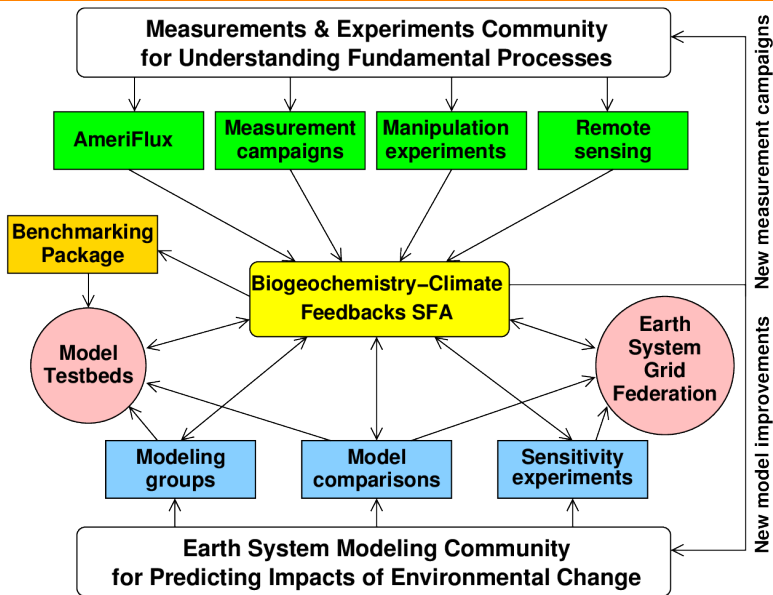
## Biogeochemistry Feedbacks Goals

The overarching goals of our biogeochemistry feedbacks research are to identify and quantify the feedbacks between biogeochemical cycles and the climate system, and to quantify and reduce uncertainties in Earth system models (ESMs) associated with those feedbacks.

Our multi-institutional team is

- ▶ developing new hypothesis-driven approaches for evaluating ESM process representations at site, regional and global scales;
- ▶ investigating the degree to which contemporary observations can be used to reduce uncertainties in future scenarios (e.g., emergent constraints);
- ▶ developing open source benchmarking software tools that leverage laboratory, field, and remote sensing data sets for systematic evaluation of ESM biogeochemical processes; and
- ▶ evaluating the performance of biogeochemical processes and feedbacks in multiple ESMs using benchmarking tools.

# Biogeochemistry–Climate Feedbacks SFA Diagram





# Drought severity mediated by plant responses to rising CO<sub>2</sub>

## Objective

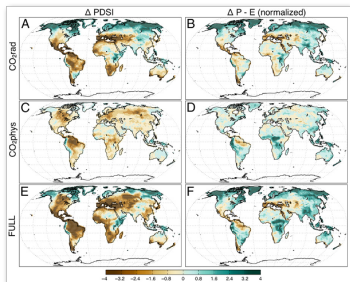
Understand how plant responses to increasing CO<sub>2</sub> affect predictions of future drought stress.

## Approach

- ▶ Used seven CMIP5 Earth system models (ESMs) to quantify the effect of increasing atmospheric CO<sub>2</sub> on changes in PDSI and P–E drought metrics.
- ▶ Three idealized simulations with different CO<sub>2</sub> couplings were used to distinguish climate effects from vegetation effects.

## Results/Impacts

- ▶ We found that plant physiological responses to CO<sub>2</sub> reduced predictions of future drought stress.
- ▶ This reduction was captured by plant-centric rather than atmospheric-centric metrics from ESMs.
- ▶ Drought metrics that account for plant transpiration responses to changing CO<sub>2</sub> are needed to reduce uncertainties in future assessments.



Maps of the multimodel mean difference for a quadrupling of CO<sub>2</sub> for (A, C, and E) Palmer Drought Severity Index (PDSI) and (B, D, and F) precipitation minus evapotranspiration (P–E) normalized by the standard deviation of the multimodel mean at each point. Green colors indicate more water on land; brown colors indicate less water on land. A and B represent CO<sub>2</sub> radiative coupling, C and D CO<sub>2</sub> physiological coupling, and E and F full CO<sub>2</sub> coupling.

# Do Climate–Carbon Feedbacks Intensify Over Time?

## Objective

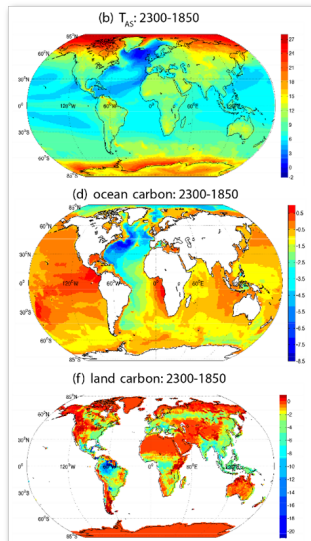
Understand how land and ocean contributions to climate–carbon feedbacks evolve over time from 1850 to 2300.

## Approach

- ▶ Use CESM1(BGC) to assess carbon cycle dynamics for the Representative Concentration Pathway 8.5 and its extension.
- ▶ Three simulations with different levels of radiative coupling allowed us to diagnose parameters describing the gain of the climate–carbon feedback.

## Results/Impacts

- ▶ We found that the gain of the climate–carbon feedback increased almost three-fold from 2100 to 2300.
- ▶ Ocean carbon sensitivity to climate change was proportional to increases in heat content.
- ▶ Climate influence on carbon was largest in the Atlantic Ocean and in Central and South American forests.



# Land use change & carbon cycle feedback interactions

## Objective

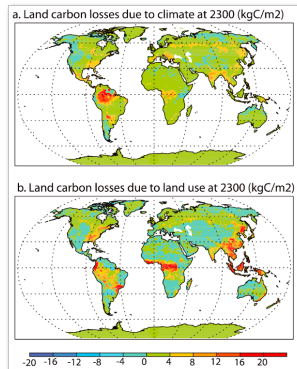
Quantify the impact of human land use and land cover change (LULCC) on the terrestrial carbon budget to year 2300.

## Approach

- ▶ Used an Earth system model (ESM) forced with Representative Concentration Pathway 8.5 (RCP8.5).
- ▶ Accounted for direct and quasi-direct LULCC CO<sub>2</sub> emissions as well as the influence of LULCC on reducing natural carbon sinks in the future.

## Results/Impacts

- ▶ Conversion of land (e.g., from forest to croplands via deforestation) resulted in a model-estimated, cumulative carbon loss of 490 Pg C between 1850 and 2300.
- ▶ About 40% of carbon loss associated with LULCC arose from direct human modification of land surface; remaining 60% was indirect consequence of loss of potential natural carbon sinks.
- ▶ Most anthropogenic carbon uptake resulted from effect of rising atmospheric CO<sub>2</sub> on photosynthesis in trees, indicating model-projected carbon feedbacks were sensitive to deforestation.



Change in land carbon at year 2300 caused by (a) climate change from CO<sub>2</sub> and other forcing agents, and (b) human land use and land cover change.

# ESMs overestimate wood C allocation & total biomass

## Objective

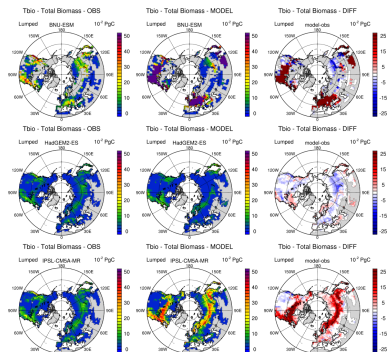
Evaluate predicted vegetation biomass and allocation for Northern Hemisphere extratropics in CMIP5 Earth system models (ESMs).

## Approach

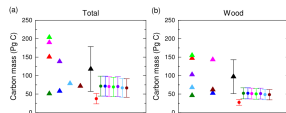
- ▶ We used forest biomass data synthesized from radar remote sensing and ground-based measurements across northern extratropics.
- ▶ We evaluated leaf, wood, and root carbon density and total carbon biomass for CMIP5 ESMs.

## Results/Impacts

- ▶ We found that most ESMs overestimated wood carbon stocks and total biomass, likely a result of excessive carbon allocation to wood.
- ▶ Total forest biomass was primarily positively correlated with precipitation variations, with temperature becoming equally important at higher latitudes, in models and observations.
- ▶ Results suggest parametric or structural model differences are a larger source of uncertainty than differences in transient responses.



Comparison of projected total biomass from three models (middle column) compared to observational estimates remapped to the model grids (left column) and resulting bias maps (right column).



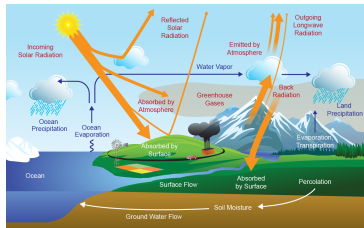
Global (a) total and (b) wood carbon mass from models (triangles) and observations (circles).



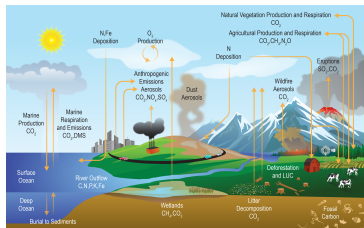
# What is ILAMB?

A community coordination activity created to:

- ▶ **Develop internationally accepted benchmarks** for land model performance by drawing upon collaborative expertise
- ▶ **Promote the use of these benchmarks** for model intercomparison
- ▶ **Strengthen linkages between experimental, remote sensing, and climate modeling communities** in the design of new model tests and new measurement programs
- ▶ **Support the design and development of open source benchmarking tools** (Luo et al., 2012)



*Energy and Water Cycles*

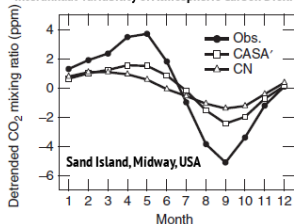


*Carbon and Biogeochemical Cycles*

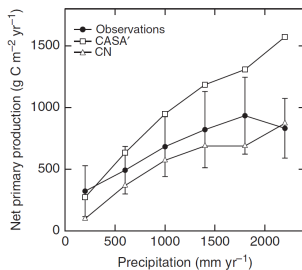
# What is a Benchmark?

- ▶ A **benchmark** is a quantitative test of model function achieved through comparison of model results with observational data.
- ▶ Acceptable performance on benchmarks **is a necessary but not sufficient condition** for a fully functioning model.
- ▶ **Functional benchmarks** offer tests of model responses to forcings and yield insights into ecosystem processes.
- ▶ Effective benchmarks must draw upon a broad set of independent observations to evaluate model performance on **multiple temporal and spatial scales**.

Interannual Variability of Atmospheric Carbon Dioxide



Models often fail to capture the amplitude of the seasonal cycle of atmospheric CO<sub>2</sub>.



Models may reproduce correct responses over only a limited range of forcing variables.

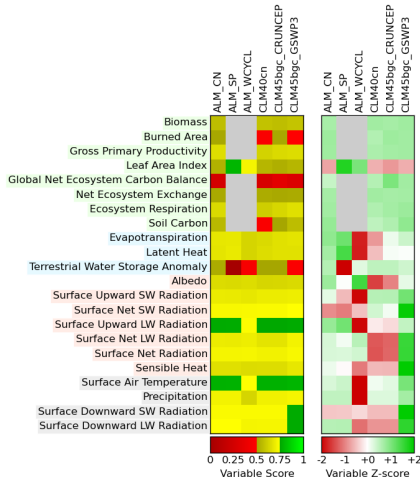
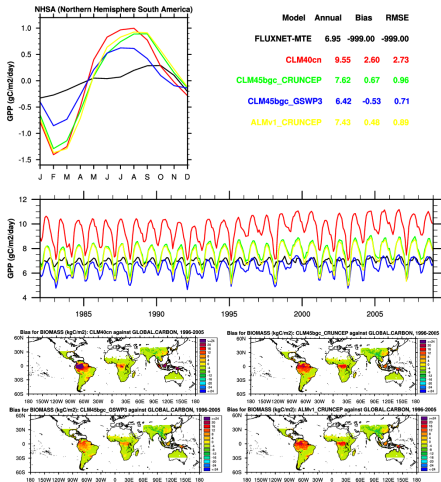
(Randerson et al., 2009)

# Why Benchmark?

- ▶ **to demonstrate model improvements** in representation of coupled climate and biogeochemical cycles
- ▶ **to quantitatively diagnose impacts of model development** in related fields on carbon cycle processes
- ▶ **to guide synthesis efforts**, such as the Intergovernmental Panel on Climate Change (IPCC), in assessing model fidelity
- ▶ **to increase scrutiny of key datasets** used for model evaluation
- ▶ **to identify gaps in existing observations** needed for model validation
- ▶ **to accelerate incorporation of new measurements** for rapid and widespread use in model assessment
- ▶ **to provide a quantitative, application-specific set of minimum criteria** for participation in model intercomparison projects (MIPs).

# Current Status of the ILAMB Packages

- ▶ **ILAMBv1** released at 2015 AGU Town Hall, doi:[10.18139/ILAMB.v001.00/1251597](https://doi.org/10.18139/ILAMB.v001.00/1251597)
- ▶ **ILAMBv2** released at 2016 ILAMB Workshop, doi:[10.18139/ILAMB.v002.00/1251621](https://doi.org/10.18139/ILAMB.v002.00/1251621)
- ▶ Being used for ACME and CESM evaluation



# ILAMB Prototype Diagnostics System

## ▶ Current variables:

Aboveground live biomass (Contiguous US, Pan Tropical Forest), Burned area (GFED3), CO<sub>2</sub> (NOAA GMD, Mauna Loa), Gross primary production (Fluxnet, MTE), Leaf area index (AVHRR, MODIS), Global net land flux (GCP, Khatiwala/Hoffman), Net ecosystem exchange (Fluxnet, GBA), Ecosystem Respiration (Fluxnet, GBA), Soil C (HWSD, NCSCDv2), Evapotranspiration (GLEAM, MODIS), Latent heat (Fluxnet, MTE), Soil moisture (ESA), Terrestrial water storage anomaly (GRACE), Albedo (CERES, GEWEX, MODIS), Surface up SW/LW radiation (CERES, GEWEX.SRB, WRMC.BSRN), Sensible heat (Fluxnet, GBA), Surface air temperature (CRU, Fluxnet), Precipitation (Fluxnet, GPCC, GPCP2), Surface down SW/LW radiation (Fluxnet, CERES, GEWEX.SRB, WRMC.BSRN),

## ▶ Graphics and scoring systems:

- Annual mean, Bias, RMSE, seasonal cycle, spatial distribution, interannual coeff. of variation and variability, long-term trend scores
- Global maps, variable to variable, and time series comparisons

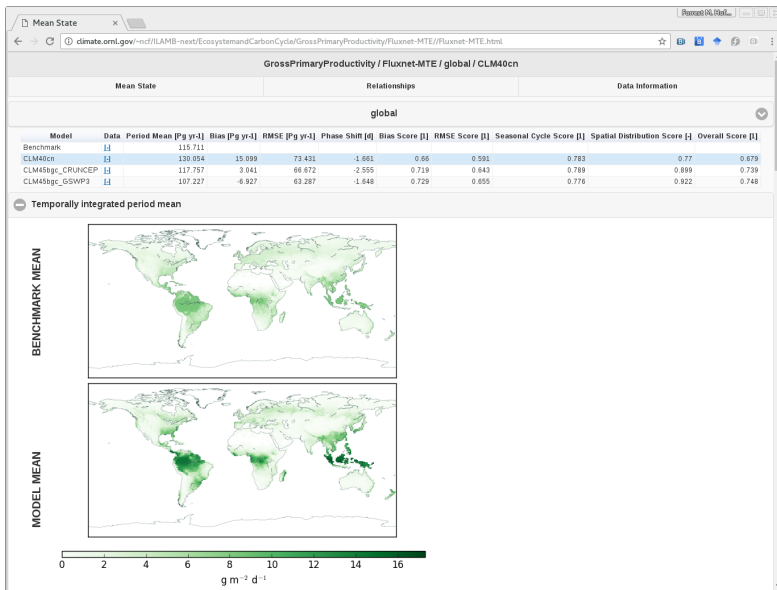
## ▶ Software:

Freely distributed, designed to be user friendly and to enable easy addition of new variables

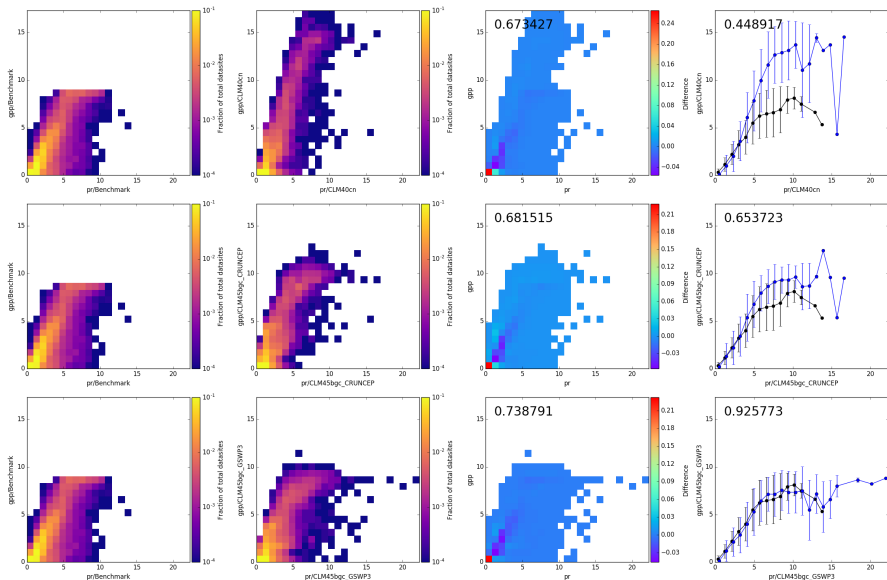
# ILAMBv2 Layout

	CLM40cn	CLM45bgc_CRUNCEP	CLM45bgc_GSWP3	
Biomass	0.63	0.65	0.70	▼
Burned Area	0.35	0.49	0.50	▼
Gross Primary Productivity	0.68	0.72	0.74	▼
Leaf Area Index	0.51	0.50	0.56	▼
Global Net Ecosystem Carbon Balance	0.27	0.34	0.30	▲
<a href="#">GPP (50.0%)</a>	0.36	0.48	0.44	
<a href="#">Hoffman (50.0%)</a>	0.18	0.21	0.16	
Net Ecosystem Exchange	0.49	0.48	0.49	▼
Ecosystem Respiration	0.63	0.68	0.72	▼
Soil Carbon	0.45	0.51	0.65	▼
Evapotranspiration	0.73	0.76	0.78	▼
Latent Heat	0.78	0.80	0.81	▼
Terrestrial Water Storage Anomaly	0.50	0.50	0.48	▼
Albedo	0.74	0.74	0.75	▲
<a href="#">CERES (33.3%)</a>	0.77	0.77	0.78	
<a href="#">GEWEX_SRB (33.3%)</a>	0.69	0.70	0.70	
<a href="#">MODIS (33.3%)</a>	0.75	0.75	0.76	
Surface Upward SW Radiation	0.79	0.79	0.80	▼
Surface Net SW Radiation	0.87	0.87	0.89	▼
Surface Upward LW Radiation	0.94	0.94	0.95	▼
Surface Net LW Radiation	0.78	0.79	0.84	▼

# ILAMBv2 Layout

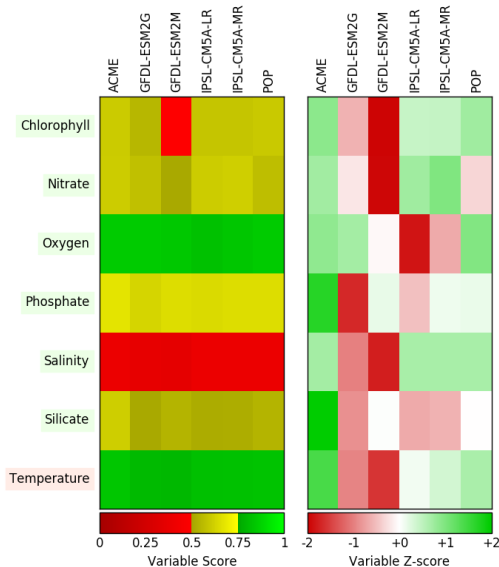
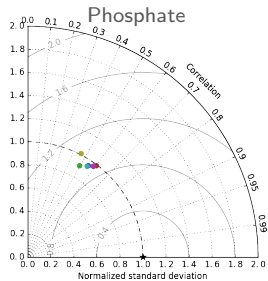
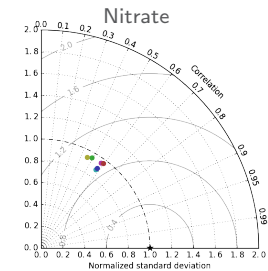


# ILAMBv2 Relationships (Under Development)





# Extending ILAMB for Ocean Model Evaluation



# Second US ILAMB Workshop, May 16–18, 2016

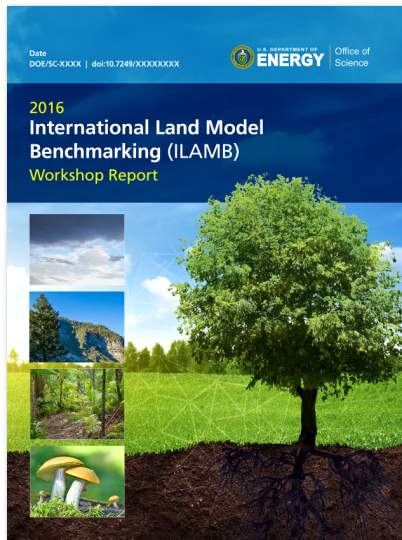
## Overarching Workshop Goals

Engage the research community in defining scientific priorities for

- ▶ Design of new metrics for model benchmarking
- ▶ Model Intercomparison Project (MIP) evaluation needs
- ▶ Model development, testbeds, and workflow practices
- ▶ Observational data sets and needed measurements

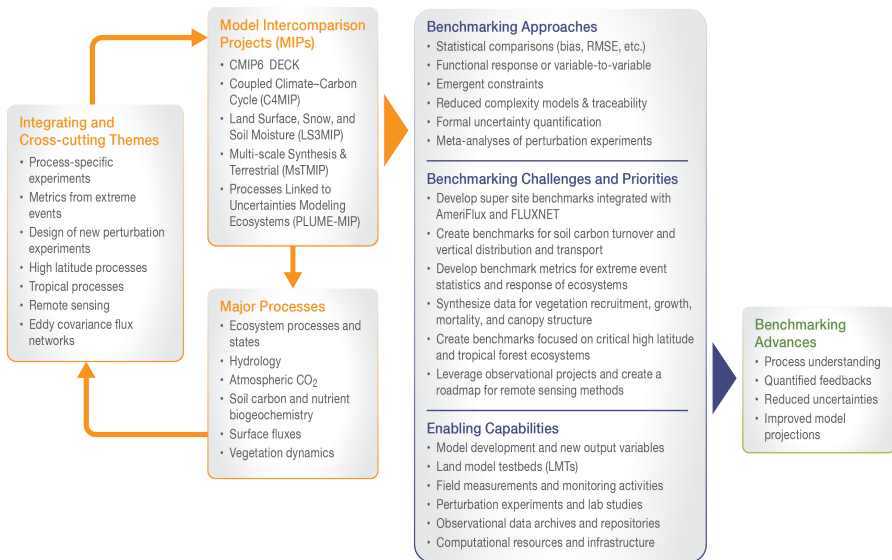
## Workshop Attendance

- ▶ 60+ participants from Australia, Japan, China, Germany, Sweden, Netherlands, UK, and US
- ▶ 10 modeling centers represented
- ▶ ~25 online attendees at any time



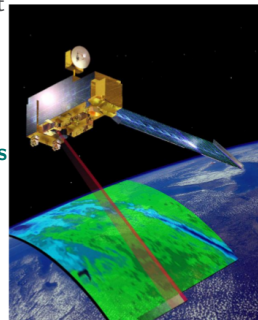
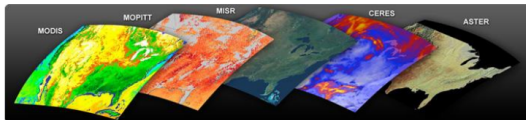
[doi:10.2172/1330803](https://doi.org/10.2172/1330803)

# 2016 ILAMB Workshop Synthesis

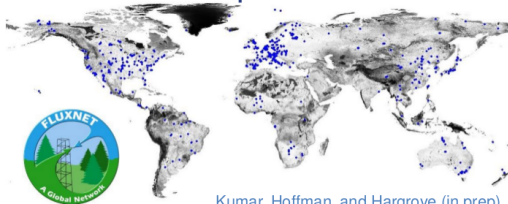


# Benchmarking Challenges and Priorities

- ▶ **Super site benchmarks** for AmeriFlux and FLUXNET
- ▶ **Benchmarks for soil carbon** turnover, distribution, transport
- ▶ **Metrics for extreme events** & response of ecosystems
- ▶ **Data for vegetation** recruitment, growth, mortality, phenology, canopy structure
- ▶ Benchmarks for critical **high latitude & tropical ecosystems**
- ▶ Leverage **field projects & remote sensing methods**



## FLUXNET Representativeness



Kumar, Hoffman, and Hargrove (in prep)



# Future ILAMB Development and Application

- ▶ ILAMBV1 and ILAMBV2 were applied to:
  - ▶ CMIP5 Historical and esmHistorical simulations
  - ▶ ACME (now called E3SM) Land Model evaluation
  - ▶ Model development of the Community Land Model (CLM5)
- ▶ ILAMBV2 use in U.S. Department of Energy projects:
  - ▶ NGEE Arctic, NGEE Tropics, and SPRUCE are adopting the framework for evaluating process parameterizations & integrating field observations
  - ▶ ACME is developing metrics for evaluation of new land model features
  - ▶ BGC Feedbacks is developing the framework and benchmarking MIPs
- ▶ Future projects where we hope to apply ILAMB:
  - ▶ CMIP6, including C<sup>4</sup>MIP, LS3MIP, and LUMIP
  - ▶ TRENDY
  - ▶ PLUME-MIP
- ▶ Others are using and contributing to ILAMB:
  - ▶ a NASA-funded Permafrost Benchmarking System
  - ▶ in-house model evaluation at Hadley Center, U. Tokyo, MPI-Met

# Acknowledgments



U.S. DEPARTMENT OF  
**ENERGY**

---

Office of Science

This research was performed for the Biogeochemistry–Climate Feedbacks Scientific Focus Area, which is sponsored by the Regional and Global Climate Modeling (RGCM) Program in the Climate and Environmental Sciences Division (CESD) of the Biological and Environmental Research (BER) Program in the U.S. Department of Energy Office of Science. Oak Ridge National Laboratory (ORNL) is managed by UT-Battelle, LLC, for the U.S. Department of Energy under Contract No. DE-AC05-00OR22725.

# References

- F. M. Hoffman, C. D. Koven, G. Keppel-Aleks, D. M. Lawrence, W. J. Riley, J. T. Randerson, A. Ahlström, G. Abramowitz, D. D. Baldocchi, M. Best, B. Bond-Lamberty, M. D. Kauwe, A. S. Denning, A. Desai, V. Eyring, R. Fisher, P. J. Gleckler, M. Huang, G. Hugelius, A. K. Jain, N. Y. Kiang, H. Kim, R. D. Koster, S. V. Kumar, H. Li, Y. Luo, J. Mao, N. G. McDowell, U. Mishra, P. Moorcroft, G. S. H. Pau, D. M. Ricciuto, K. Schaefer, C. R. Schwalm, S. Serbin, E. Shevliakova, A. G. Slater, J. Tang, M. Williams, J. Xia, C. Xu, R. Joseph, and D. Koch. International Land Model Benchmarking (ILAMB) 2016 workshop report. Technical Report DOE/SC-0186, U.S. Department of Energy, Office of Science, Germantown, Maryland, USA, 2016. doi:10.2172/1330803.
- Y. Q. Luo, J. T. Randerson, G. Abramowitz, C. Bacour, E. Blyth, N. Carvalhais, P. Ciais, D. Dalmonch, J. B. Fisher, R. Fisher, P. Friedlingstein, K. Hibbard, F. Hoffman, D. Huntzinger, C. D. Jones, C. Koven, D. Lawrence, D. J. Li, M. Mahecha, S. L. Niu, R. Norby, S. L. Piao, X. Qi, P. Peylin, I. C. Prentice, W. Riley, M. Reichstein, C. Schwalm, Y. P. Wang, J. Y. Xia, S. Zaehle, and X. H. Zhou. A framework for benchmarking land models. *Biogeosci.*, 9(10):3857–3874, Oct. 2012. doi:10.5194/bg-9-3857-2012.
- J. T. Randerson, F. M. Hoffman, P. E. Thornton, N. M. Mahowald, K. Lindsay, Y.-H. Lee, C. D. Nevison, S. C. Doney, G. Bonan, R. Stöckli, C. Covey, S. W. Running, and I. Y. Fung. Systematic assessment of terrestrial biogeochemistry in coupled climate-carbon models. *Global Change Biol.*, 15(9):2462–2484, Sept. 2009. doi:10.1111/j.1365-2486.2009.01912.x.