



Responses of two nonlinear microbial models to warming and increased carbon input

Y. P. Wang¹, J. Jiang², B. Chen-Charpentier³, F. B. Augusto⁴, A. Hastings⁵, F. Hoffman⁶, M. Rasmussen⁷, M. J. Smith⁸, K. Todd-Brown^{9,11}, Y. Wang¹⁰, X. Xu⁹, and Y. Q. Luo⁹

¹CSIRO Ocean and Atmosphere, PMB 1, Aspendale, Victoria 3195, Australia

²Department of Ecology and Evolutionary Biology, University of Tennessee, Knoxville, TN 37996, USA

³Department of Mathematics, University of Texas, Arlington, TX, USA

⁴Department of Mathematics and Statistics, Austin Peay State University, Clarksville TN 37044, USA

⁵Department of Environmental Science and Policy, University of California, One Shields Avenue, Davis, CA 95616, USA

⁶Oak Ridge National Laboratory, Computational Earth Sciences Group, P.O. Box 2008, Oak Ridge, TN 37831, USA

⁷Department of Mathematics, Imperial College, London, UK

⁸Computational Science Laboratory, Microsoft Research, Cambridge, UK

⁹Department of Microbiology and Plant Biology, University of Oklahoma, Norman, OK, USA

¹⁰Department of Mathematics, University of Oklahoma, Norman, OK, USA

¹¹Pacific Northwest National Laboratory, Richland, WA, USA

Correspondence to: Y.-P. Wang (yingping.wang@csiro.au)

Received: 14 July 2015 – Published in Biogeosciences Discuss.: 7 September 2015

Revised: 9 January 2016 – Accepted: 30 January 2016 – Published: 18 February 2016

Abstract. A number of nonlinear microbial models of soil carbon decomposition have been developed. Some of them have been applied globally but have yet to be shown to realistically represent soil carbon dynamics in the field. A thorough analysis of their key differences is needed to inform future model developments. Here we compare two nonlinear microbial models of soil carbon decomposition: one based on reverse Michaelis–Menten kinetics (model A) and the other on regular Michaelis–Menten kinetics (model B). Using analytic approximations and numerical solutions, we find that the oscillatory responses of carbon pools to a small perturbation in their initial pool sizes dampen faster in model A than in model B. Soil warming always decreases carbon storage in model A, but in model B it predominantly decreases carbon storage in cool regions and increases carbon storage in warm regions. For both models, the CO₂ efflux from soil carbon decomposition reaches a maximum value some time after increased carbon input (as in priming experiments). This maximum CO₂ efflux (F_{\max}) decreases with an increase in soil temperature in both models. However, the sensitivity of F_{\max} to the increased amount of carbon input increases with soil temperature in model A but decreases monotonically with an

increase in soil temperature in model B. These differences in the responses to soil warming and carbon input between the two nonlinear models can be used to discern which model is more realistic when compared to results from field or laboratory experiments. These insights will contribute to an improved understanding of the significance of soil microbial processes in soil carbon responses to future climate change.

1 Introduction

The dynamics of soil carbon in most global biogeochemical models are modelled using first-order kinetics, which assumes that the decay rate of soil carbon is proportional to the size of soil carbon pool. This approach has been recently questioned on theoretical grounds (Schimel and Weintraub, 2003; Fontaine and Barot, 2005), and is contradicted by the observed responses of soil carbon decay to the addition of fresh organic litter (Fontaine et al., 2004; Sayer et al., 2011) or soil warming (Luo et al., 2001; Melillo et al., 2002; Bradford et al., 2008). As a result, a number of nonlinear soil microbial models have been developed (Alli-

son et al., 2010; Manzoni and Porporato, 2007; Wutzler and Reichstein, 2008) and a few of them have been applied at global scales (Wieder et al., 2013; Sulman et al. 2014). Predictions of future soil carbon change by these nonlinear models can differ significantly from conventional linear models (Fontaine et al., 2007; Wieder et al., 2013). For example, conventional linear soil carbon models predict that soil carbon will decrease with increased temperature, all else being equal (Jenkinson et al., 1991), whereas the nonlinear models predict that the soil carbon can decrease or increase, depending on the temperature sensitivity of microbial growth efficiency and turnover rates (Frey et al., 2013; Hagerly et al., 2014; Li et al., 2014). However, the nonlinear models have yet to be validated against field measurements as extensively as the conventional linear soil carbon models (Wieder et al., 2016). They also have some undesirable features, particularly the presence of strong oscillations or bifurcations (Manzoni and Porporato, 2007; Wang et al., 2014) in their dynamics that are not observed in real-world systems. Therefore it is important to improve understanding of the behaviour of these nonlinear models before they are used in earth system models for informing climate decisions.

Nonlinear microbial models can explain why the decomposition rate of recalcitrant organic soil carbon varies after the addition of easily decomposable organic carbon to soil, which is known as the priming effect (Kuzyakov et al., 2000). This response has been observed in the field (Fontaine et al., 2004; Sayer et al., 2011) but cannot be predicted by conventional linear soil carbon models without modification (Fujita et al., 2014). Theoretically, decomposition of soil organic carbon is catalysed by extracellular enzymes that are produced by soil microbes. The production rate of extracellular enzymes depends on the biomass and composition of the soil microbial population and their local environment. Therefore the decomposition rate of soil organic carbon should depend on both microbial biomass and substrate concentration (Schimel and Weintraub, 2003), rather than on substrate concentration only, as assumed in conventional linear models.

This sensitivity of soil carbon decomposition to the input of additional carbon has important implications for the storage of carbon by the biosphere in response to climate change. Soil is the largest land carbon pool and therefore the direction and magnitude of the global carbon–climate feedback strongly depends on the responses of soil carbon to future warming (Jones and Fallow, 2009; Hagerly et al., 2014).

A number of nonlinear models have been developed that explicitly account for the dynamics of the soil microbial community (Parnas, 1978; Smith, 1979; Schimel and Weintraub, 2003; Wutzler and Reichstein, 2008; Allison et al., 2010; Grant, 2014; Riley et al., 2014; Tang and Riley, 2014). Parnas (1979) explored the mechanism of priming using a nonlinear soil microbial model that included both soil carbon and nitrogen dynamics. Smith (1979) developed a nonlinear model of soil carbon decomposition that included the interactions among carbon, nitrogen, phosphorus, and potas-

sium. Smith's model represented multiple forms of carbon, nitrogen, and phosphorus and their transformation via abiotic (such as adsorption and desorption) and biological processes by different groups of soil microbes. The soil models developed by both Parnas (1978) and Smith (1979) were based on regular Michaelis–Menten kinetics, in which the rate of carbon decomposition depends linearly on the concentration of soil enzymes but nonlinearly on substrate concentration (Roberts, 1977). This was challenged by Schimel and Weintraub (2003), who emphasized the importance of exoenzyme limitation on soil carbon decomposition. Schimel and Weintraub (2003) used a reverse Michaelis–Menten kinetics formulation to show that the response of soil carbon decomposition to carbon substrate concentration can be nonlinear regardless of carbon supply. The reverse Michaelis–Menten kinetics for soil carbon decomposition assumes that the rate of carbon decomposition depends nonlinearly on enzyme concentration but linearly on substrate concentration.

The nonlinear soil carbon models described above have subsequently been used in a variety of studies: to explore different the fundamental mechanisms controlling soil carbon decomposition (Schimel and Weintraub, 2003, for example), to investigate the sensitivity of soil carbon and other biogeochemical processes to warming (Grant, 2014; Tang and Riley, 2014), to investigate the response of soil carbon to a small perturbation, such as priming (Wutzler and Reichstein, 2013), and to predict soil carbon responses to global change (Wieder et al., 2013; Sulman et al., 2014). Some studies have explored the mathematical properties of these nonlinear models in detail (for example, Manzoni et al., 2004; Manzoni and Porporato, 2007; Raupach, 2007; Wang et al., 2014). However, to date these have been predominantly restricted to obtaining insights for individual models and with a specific parameterization.

In this study we use mathematical analysis to improve our understanding of the key properties of nonlinear microbial models. For simplicity and analytic convenience, we choose two simple types of nonlinear microbial models: one with regular Michaelis–Menten kinetics and another with the reverse Michaelis–Menten kinetics. These models can be considered as two special cases of the more general kinetics discussed by Tang (2015). These two simple formulations are amenable to analytic approximations, whereas the formulations with more general kinetics, such as the equilibrium chemistry approximations, are not. We only represent three soil carbon pools with each model and ignore abiotic processes for simplicity, despite these being potentially important under certain conditions (see Tang and Riley, 2014 for an example). In comparing the two nonlinear microbial models, we use the standard mathematical technique to analyse their responses to a small perturbation (see Wang et al., 2014), such as a step change in soil temperature or carbon input, or whether two models exhibit oscillatory behaviour under certain conditions, and how the analytic approximations to the exact model solutions differ between the two nonlinear mod-

els. We address the following questions. (1) How do the responses of these two models to soil warming differ, and why? (2) Can both models simulate the response of soil carbon decomposition to increased carbon input as in a priming experiment and what determines the magnitude of the response in each model?

2 Methods

2.1 Model description

We consider two nonlinear soil microbial models: model A, which uses reverse Michaelis–Menten kinetics, and model B, which uses regular Michaelis–Menten kinetics (specified below). Both models have three carbon pools: litter carbon, microbial biomass, and soil carbon.

Model A is based on the nonlinear microbial model of soil carbon described Wutzler and Reichstein (2013, their model A1). Their original model has four pools, modelled by

$$\frac{dC_l}{dt} = (1 - a) F_{npp} - \mu_l C_l \frac{C_b}{C_b + K_b}, \quad (1)$$

$$\frac{dC_s}{dt} = a F_{npp} + \mu_b C_b - \mu_s C_s \frac{C_b}{C_b + K_b}, \quad (2)$$

$$\frac{dC_b}{dt} = \varepsilon \mu_m C_b \frac{C_m}{C_m + K_m} - \mu_b C_b, \quad (3)$$

and

$$\frac{dC_m}{dt} = (\mu_l C_l + \mu_s C_s) \frac{C_b}{C_b + K_b} - \mu_m C_b \frac{C_m}{C_m + K_m}, \quad (4)$$

where t is time in years; C_l , C_s , C_b , and C_m represent the pool sizes of litter carbon, soil carbon, microbial biomass carbon, and assimilable soil carbon in g C m^{-2} , respectively; and F_{npp} is carbon input in $\text{g C m}^{-2} \text{yr}^{-1}$, with the fraction a going to the soil carbon pool, and $(1 - a)$ to the litter carbon pool. μ_l , μ_s , μ_b , and μ_m are rate constants of litter carbon, soil carbon, microbial biomass, and assimilable carbon per year, respectively (see Schimel and Weintraub, 2003); ε is microbial growth efficiency; and K_b and K_m are two empirical constants in g C m^{-2} for the dependence of the consumption of litter carbon or assimilable carbon by soil microbes.

In this study we are interested in the responses at timescales greater than 1 year. We therefore assume that C_m is at steady state ($dC_m / dt = 0$) because of its relatively fast turnover (less than a few days). Therefore the dynamics of microbial biomass, C_b , can be simplified to

$$\frac{dC_b}{dt} = \varepsilon (\mu_l C_l + \mu_s C_s) \frac{C_b}{C_b + K_b} - \mu_b C_b. \quad (5)$$

Model A as used in this paper consists of Eqs. (1), (2), and (5) unless otherwise specified. This type of formulation was also used by Schimel and Weintraub (2003) and Drake et al. (2013).

Model B, based on the model used by Allison et al. (2010) and Wieder et al. (2013) with one additional assumption that both enzyme and dissolved organic carbon pools are at steady states, is given by

$$\frac{dC_l}{dt} = (1 - a) F_{npp} - C_b \frac{V_l C_l}{C_l + K_l}, \quad (6)$$

$$\frac{dC_s}{dt} = a F_{npp} + \mu_b C_b - C_b \frac{V_s C_s}{C_s + K_s}, \quad (7)$$

and

$$\frac{dC_b}{dt} = \varepsilon C_b \left(\frac{V_l C_l}{C_l + K_l} + \frac{V_s C_s}{C_s + K_s} \right) - \mu_b C_b, \quad (8)$$

where K_l and K_s are Michaelis–Menten constants in g C m^{-2} , and V_l and V_s are maximum rates of substrate carbon (litter or soil) assimilation rate per unit microbial biomass per year. This type of kinetics was used by Riley et al. (2014), Wieder et al. (2014) and Wang et al. (2014).

These two models make different assumptions about the rate-limiting step in carbon decomposition. Both models assume that microbes have similar access to litter and soil carbon. In model A, carbon decomposition is assumed to depend nonlinearly on the number of binding sites or the amount of substrate and linearly on enzymes or microbial biomass (Schimel and Weintraub, 2003). In model B, carbon decomposition is assumed to depend nonlinearly on enzymes or microbial biomass and linearly on the number of binding sites or the amount of substrate (Allison et al., 2010).

When carbon input, F_{npp} , is equal to zero, the steady-state solution is zero for litter and soil carbon pools for both models (a trivial solution). When $F_{npp} > 0$, the steady-state solutions to model A are

$$C_l^* = \frac{(1 - a) F_{npp}}{\mu_l} + \frac{(\varepsilon^{-1} - 1)(1 - a)\mu_b K_b}{\mu_l}, \quad (9)$$

$$C_b^* = \frac{F_{npp}}{(\varepsilon^{-1} - 1)\mu_b}, \quad (10)$$

and

$$C_s^* = \left(a + \frac{1}{\varepsilon^{-1} - 1} \right) \frac{F_{npp}}{\mu_s} + (1 + a(\varepsilon^{-1} - 1)) \frac{\mu_b K_b}{\mu_s}. \quad (11)$$

The steady-state solutions to model B are

$$C_l^* = \frac{K_l}{\frac{\varepsilon V_l}{(1 - \varepsilon)(1 - a)\mu_b} - 1}, \quad (12)$$

$$C_b^* = \frac{F_{npp}}{\mu_b (\varepsilon^{-1} - 1)}, \quad (13)$$

and

$$C_s^* = \frac{K_s}{\frac{V_s}{\mu_b} \frac{\varepsilon}{\varepsilon + a(1 - \varepsilon)} - 1}. \quad (14)$$

CO₂ efflux from the decomposition of soil organic carbon (F_s) is calculated as

$$F_s = (1 - \varepsilon) \mu_s C_s \frac{C_b}{C_b + K_b} \quad (15)$$

for model A and

$$F_s = (1 - \varepsilon) C_b \frac{V_s C_s}{C_s + K_s} \quad (16)$$

for model B.

2.2 Parameter values

We allow all model parameters to vary with soil temperature (T_s) with the exception of parameter a . Based on the work of Allison et al. (2010) and Hargerty et al. (2014), we model the temperature dependence of parameters as

$$\varepsilon = \varepsilon_R - x(T_s - T_R) \quad (17)$$

and

$$\mu_b = \mu_{bR} \exp(b(T_s - T_R)) \quad (18)$$

for both models, where T_R is reference soil temperature in °C (i.e. 15 °C), ε_R and μ_{bR} are the values of ε and μ_b at $T_s = T_R$, respectively, and x and b are two empirical constants (see Table 1 for their default values).

Previously there has been debate about the temperature sensitivities of ε and μ_b (see Frey et al., 2013; Hargerty et al., 2014). The microbial models as developed by Allison et al. (2010) and used by Wieder et al. (2013), and Wang et al. (2014) assumed that ε was temperature-sensitive and μ_b was temperature-insensitive (or $b = 0$). This assumption was recently challenged by Hargerty et al. (2014), who found that μ_b was temperature-sensitive and ε was not, based on a laboratory soil-warming experiment. Here we will explore the consequence of different assumptions about the temperature sensitivities of ε and μ_b on the simulated response of soil carbon to warming by the two models (see Sect. 3.2).

We also assume that three additional model parameters in model A, K_b , μ_1 , and μ_s depend on soil temperature exponentially, with

$$K_b = K_{bR} \exp(\alpha_k(T_s - T_R)), \quad (19)$$

$$\mu_1 = \mu_{1R} \exp(\alpha_1(T_s - T_R)), \quad (20)$$

and

$$\mu_s = \mu_{sR} \exp(\alpha_s(T_s - T_R)), \quad (21)$$

where K_{bR} , μ_{1R} , and μ_{sR} are the values of K_b , μ_1 and μ_s when soil temperature (T_s) is equal to the reference temperature, T_R (15 °C in this study), and α_k , α_1 , and α_s are three empirical constants with their default values listed in Table 1.

For model B, we assume that K_1 , K_s , V_1 , and V_s increase with soil temperature exponentially:

$$K_1 = K_{1R} \exp(\beta_{k1}(T_s - T_R)), \quad (22)$$

$$K_s = K_{sR} \exp(\beta_{ks}(T_s - T_R)), \quad (23)$$

and

$$V_1 = V_{1R} \exp(\beta_{v1}(T_s - T_R)), \quad (24)$$

$$V_s = V_{sR} \exp(\beta_{vs}(T_s - T_R)), \quad (25)$$

where K_{1R} , K_{sR} , V_{1R} , and V_{sR} are the values of K_1 , K_s , V_1 , and V_s at the reference soil temperature (T_R), respectively, and β_{k1} , β_{ks} , β_{v1} and β_{vs} are four empirical constants for model B (see Table 1).

As found by Wang et al. (2014), the microbial biomass as simulated by model B using the parameter values of Wieder et al. (2013) was low (< 1 % of total soil carbon). We therefore reduced the turnover rate of microbial biomass to 1.1 yr⁻¹ by assuming that 2 % of total soil organic carbon is microbial biomass carbon at a soil temperature of 15 °C. Some parameter values in model A at the reference temperature were obtained by calibrating the equilibrium litter and soil carbon pool sizes against those from model B for a soil temperature of 15 °C and carbon input of 400 g C m⁻² yr⁻¹, as used in Wang et al. (2014).

2.3 Analytic solutions and numerical simulations

We derived and used analytic solutions whenever possible for comparing the two models. Specifically, we mathematically analysed the temperature dependence of steady-state soil carbon pool size, and derived an analytic approximation of soil temperature at which equilibrium soil carbon is at a minimum (e.g. Eq. B4 for model B). We also derived an approximate solution for the maximum CO₂ loss from soil carbon decomposition after the increased carbon input for each model (e.g. Eq. C12 for model A and Eq. C15 for model B). When an analytic solution was not possible or too cumbersome, we used numerical simulations to show the differences between the two models in their responses of carbon pools to a small perturbation in litter or microbial carbon pool sizes, and the response of CO₂ efflux from soil carbon decomposition to litter addition at a tropical forest site (Sayer et al., 2011).

3 Results

Before comparing the responses of our models to soil warming and increased carbon input, we first analyse some key properties of their responses to a small perturbation, i.e. whether both models oscillate in response to a small change in their initial pool sizes and what determines the period and amplitude of the oscillation. As a step change in soil temperature or carbon input can be considered to be a perturbation,

Table 1. Default values of model parameters and their temperature sensitivities ($^{\circ}\text{C}^{-1}$). Four parameters were tuned: ¹ tuned using the microbial biomass data measured from a tropical forest site (see Sayer et al., 2011), and ² tuned against the soil carbon pool size simulated by model B by Wang et al. (2014).

Default value	Source	Temperature sensitivity	Source
$\varepsilon_{\text{R}} = 0.39$	Allison et al. (2010)	$x = 0.016$	Allison et al. (2010)
$\mu_{\text{bR}} = 1.1 \text{ yr}^{-1}$	This study ¹	$b = 0.063$	Hagerty et al. (2014)
$\mu_{\text{IR}} = 0.84 \text{ yr}^{-1}$	This study ²	$\alpha_{\text{l}} = 0.063$	Hagerty et al. (2014)
$\mu_{\text{sR}} = 0.028 \text{ yr}^{-1}$	This study ²	$\alpha_{\text{s}} = 0.063$	Hagerty et al. (2014)
$K_{\text{bR}} = 100 \text{ g C m}^{-2}$	This study ¹	$\alpha_{\text{k}} = 0.007$	Allison et al. (2010)
$K_{\text{lR}} = 67275 \text{ g C m}^{-2}$	Wang et al. (2014)	$\beta_{\text{kl}} = 0.007$	Allison et al. (2010)
$K_{\text{sR}} = 363871 \text{ g C m}^{-2}$	Wang et al. (2014)	$\beta_{\text{kss}} = 0.007$	Allison et al. (2010)
$V_{\text{IR}} = 172 \text{ yr}^{-1}$	Wang et al. (2014)	$\beta_{\text{vl}} = 0.063$	Allison et al. (2010)
$V_{\text{sR}} = 32 \text{ yr}^{-1}$	Wang et al. (2014)	$\beta_{\text{vs}} = 0.063$	Allison et al. (2010)

identifying differences in those key properties will help us understand the differences in the responses of the two models to soil warming and increased carbon input.

The response of model B to perturbation has already been analysed by Wang et al. (2014), and will not be elaborated here, but the results from that analysis will be used to compare the period and amplitude of the response to perturbation to that of model A.

3.1 Comparison of the perturbation responses of both models

Perturbation analysis is a standard mathematical technique for analysing the behaviour of a dynamic system near its equilibrium state (see Drazin, 1992, for further details). There are two kinds of perturbation responses: stable or unstable. The system states, or carbon pool sizes in this study, will always approach their equilibrium states for a stable response, or otherwise for an unstable response. For both stable and unstable responses, the transient change in a carbon pool size over time can be oscillatory or monotonic. As shown in Appendix A, the response of a carbon pool to a small perturbation is always stable, and oscillatory only if $F_{\text{npp}} < 4 \frac{(1-\varepsilon)^2}{\varepsilon} \frac{\mu_{\text{l}} \mu_{\text{b}}^2 K_{\text{b}}}{(\mu_{\text{b}} - \mu_{\text{l}})^2}$, or monotonic otherwise for model A. This region of oscillation in the two-dimensional space of carbon input and soil temperature is shown in black in Fig. 1. The response of model A to a small perturbation is oscillatory under most conditions; the conditions with low soil temperature and high carbon input are uncommon in terrestrial ecosystems.

The results of a singular perturbation analysis are strictly applicable only when the perturbation is small. However, our simulations show that the predictions from the perturbation analysis approximate well the responses of our two models to any realistic perturbation (see Appendix A of this paper and Appendix B in Wang et al., 2014). Therefore we can predict how soil carbon or other carbon pools change over time in

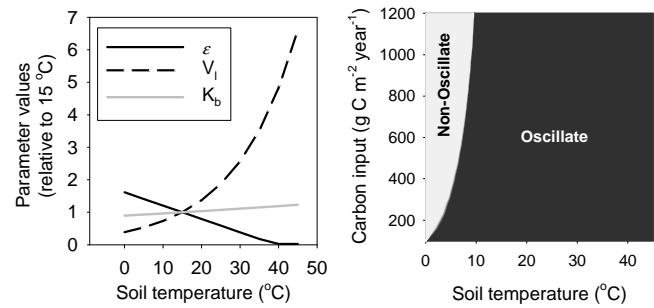


Figure 1. Variation in microbial growth efficiency (ε), V_{l} , and K_{b} with soil temperature (left panel) or the region in which model A has oscillatory or non-oscillatory response to a small perturbation (right panel) at different carbon input and soil temperature.

response to a change in carbon inputs or soil warming (i.e. a perturbation of the external environment) and explain why the responses of the carbon pools are different between the two models.

To illustrate how the responses of carbon pools to a small perturbation differ between the two models, we numerically simulated the recovery of all three carbon pools in each model after a 10 % reduction at time $t = 0$ in both litter and microbial carbon from their respective steady-state values, while no perturbation was applied to soil carbon at $t = 0$ (see Fig. 2). The amplitude of the initial oscillation is about 70 g C m^{-2} for the litter pool (see Fig. 2b) and 7 g C m^{-2} for the microbial carbon pool (see Fig. 2d) in model B, compared to about 25 g C m^{-2} (see Fig. 2a) for the litter pool and 4 g C m^{-2} for the microbial pool (see Fig. 2c) in model A. After 20 years, both the litter and microbial carbon pools are very close to their respective steady-state values in model A, but continue to oscillate in model B.

The oscillatory response can be mathematically characterized by its half-life ($t_{0.5}$) and period (p). For a stable oscillatory response, the amplitude of the oscillation decays ex-

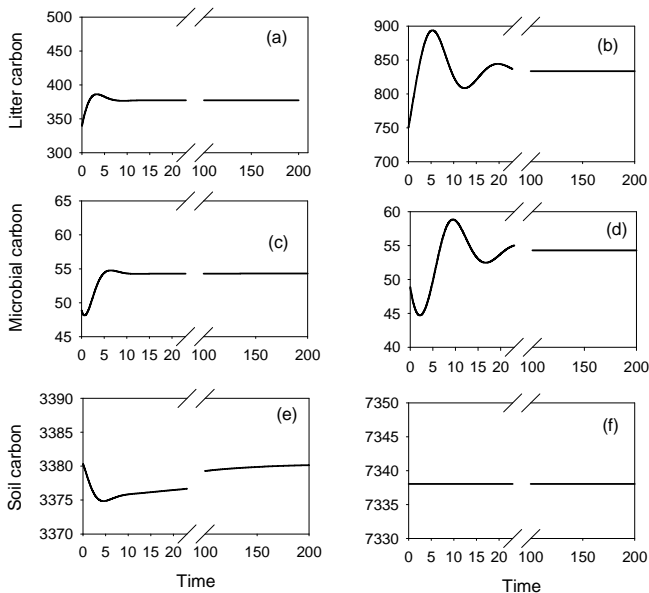


Figure 2. Dynamics of litter carbon (a, b), microbial carbon (c, d), and soil carbon (e, f) for model A (a, c, e) and model B (b, d, f) after a 10% reduction of initial pool size in litter and microbial carbon. The unit is g C m^{-2} for carbon pool on the y axis and year for time. All initial pools are steady-state values for a carbon input of $200 \text{ g C m}^{-2} \text{ yr}^{-1}$ at a soil temperature is 25°C .

ponentially. The time for the amplitude to reach 50% of its initial value is defined as the half-life ($t_{0.5}$). The smaller $t_{0.5}$ is, the faster the oscillation dampens. As explained in Appendix A, values of $t_{0.5}$ and p for model A are much smaller than model B for any given soil temperature and perturbation. This explains why the oscillatory response of model A dampens much faster than model B.

There are significant differences in the response of soil carbon between the two models. While there is no response of soil carbon to a small perturbation in litter carbon and microbial biomass in model B, soil carbon in model A decreases initially to a minimum value at 5 years after the perturbation, then gradually increases to its steady-state value. These differences in the response of soil carbon between the two models can be explained by the differences in the structure of eigenvectors for litter carbon and microbial biomass between the two models (see Appendix A for further details).

3.2 Response of soil carbon to warming

Here we explore how soil carbon responds to a step increase in soil temperature, as in many soil-warming experiments (Luo et al., 2001; Mellilo et al., 2002), and ignore the response of carbon input to warming.

As explained in Appendix A, the response of soil carbon to warming is always stable in both models and is likely to be weakly oscillatory in model A and monotonic in model B. The transient change in soil carbon after warming can be pre-

dicted using the generalized solution for soil carbon for each model (see Eq. B1 of Wang et al., 2014). Therefore the directional change in soil carbon in response to warming, i.e. increasing or decreasing only, depends on the sensitivity of the equilibrium soil carbon pool to soil temperature in both models.

As shown in Appendix B, the equilibrium pool size of soil carbon of model A always decreases with soil warming if carbon input does not increase with warming. For model B, the equilibrium pool size of soil carbon can increase or decrease in response to warming, depending on soil temperature and model parameter values. In Appendix B, we show that a soil temperature (T_x) may exist at which the equilibrium soil carbon is at a minimum for model B. Identifying T_x is important for predicting the directional change in soil carbon by model B in a warmer world, because soil carbon will decrease if the warmed soil temperature is below T_x , and will increase otherwise.

The value of T_x for model B depends on three parameters: the fraction of carbon input directly into the soil pool (a), microbial biomass turnover rate (μ_b or its temperature sensitivity b), and microbial growth efficiency (ε or its temperature sensitivity x). Figure 3a shows that T_x for model B decreases with an increase in a or x . Over the ranges of values of x and a , T_x can vary across the range of air temperature experienced by most terrestrial ecosystems. For example, T_x is $>40^\circ\text{C}$ when $x < 0.005^\circ\text{C}^{-1}$ and $a < 0.5$; therefore the equilibrium soil carbon predicted by model B decreases with warming when the warmed soil temperature is below 40°C . When $a > 0.4$ and $x > 0.02^\circ\text{C}^{-1}$, T_x is $< 0^\circ\text{C}$ (the black region on the top left corner of Fig. 3a); therefore the simulated equilibrium soil carbon by model B increases with warming if the warmed soil temperature is above 0°C .

Figure 3b shows that T_x for model B decreases with an increase in b or x . When the turnover rate of microbial biomass is not sensitive to soil temperature ($b = 0$) and $x = 0.016^\circ\text{C}^{-1}$ as the default value for model B, T_x is about 35°C . For $b = 0.063$, as estimated by Hagerty et al. (2014), $T_x < 0^\circ\text{C}$; therefore the equilibrium soil carbon pool size as simulated by model B always increases with soil warming for most terrestrial ecosystems, irrespective of the value of x .

Therefore the simulated responses of the soil carbon pool to warming by the two models can be quite different: the equilibrium soil carbon pool size always decreases with soil warming in model A, but can increase or decrease in model B, depending on the temperature sensitivities of microbial growth efficiency and microbial turnover rate and the fraction of carbon input entering soil carbon pool directly.

3.3 The response of soil carbon to an increased litter input

We compare the simulated responses of soil carbon to litter addition by the two models with field measurements from an experiment described by Sayer et al. (2011). The experiment

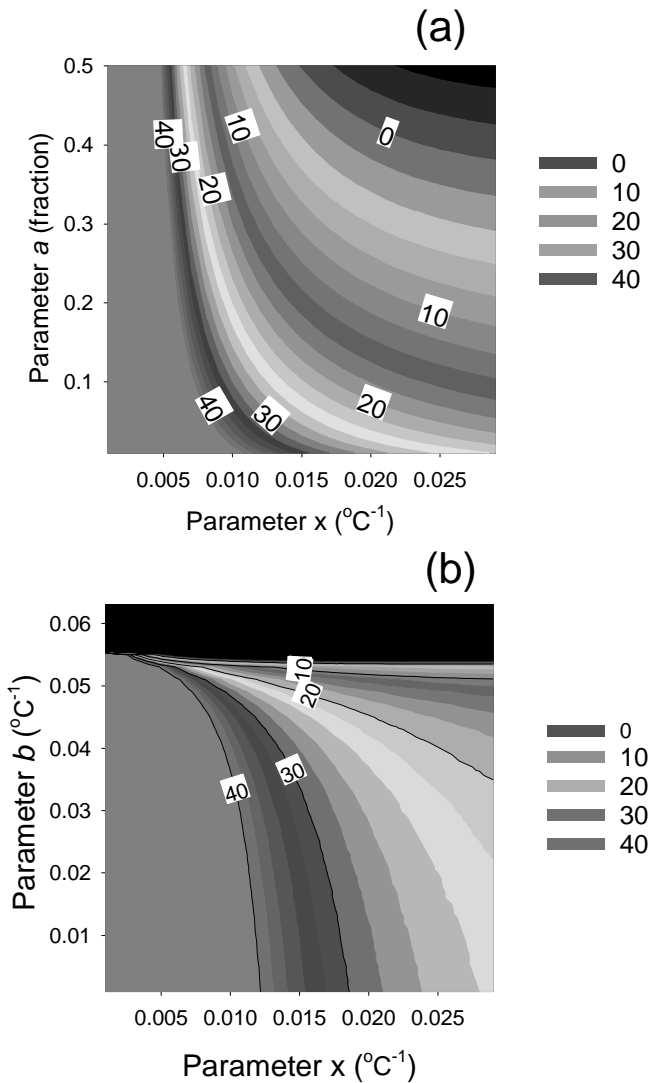


Figure 3. (a) Variation in T_x , or the soil temperature at which the equilibrium soil carbon pool is minimum, with the temperature sensitivity of microbial growth efficiency (x) and the fraction of carbon input directly into soil carbon pool (a). μ_b was fixed at 1.1 yr^{-1} (or $b = 0$) for this plot. (b) Variation in T_x with x and b . Parameter a was fixed at 0.05 for plot (b). The unit is $^{\circ}\text{C}$ for all the numbers along the contour lines in both (a) and (b). The black region in (b) represents $T_x < 0^{\circ}\text{C}$.

used three treatments: litter removal (L^-), with aboveground litter being removed regularly; increased litter input (L^+) with the added litter from the litter removal treatment; and a control (C). Measurements of CO_2 efflux from soil were made and the contribution of root–rhizosphere respiration to soil respiration was estimated using a $\delta^{13}\text{C}$ technique. Sayer et al. (2011) found that the CO_2 efflux from the decomposition of soil organic carbon in the L^+ treatment was 46% higher than in the control. Therefore, increased litter addition accelerated the decomposition of soil organic carbon. Here we assess whether the observed response of soil carbon

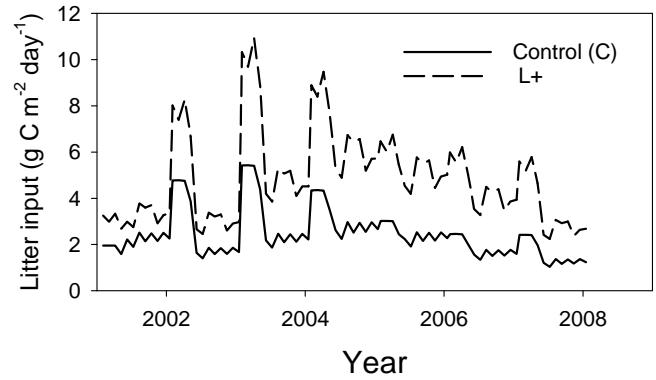


Figure 4. Mean monthly total (above- and belowground) litter carbon input to the control or litter addition treatment.

decomposition to increased litter input can be reproduced by running both models for L^+ and C treatments.

Inputs to each model, including the monthly data of soil temperature and litter input from 2002 to 2008 for two treatments (C and L^+) at the site, were compiled from Sayer and Tanner (2010a, b; see Fig. 4 for monthly litter input as an example). We also assumed that the contribution of fine-root respiration to total soil respiration (root respiration plus heterotrophic respiration) was 35% for the control treatment and 21% for the litter addition treatment, based on the estimates by Sayer et al. (2011).

The initial sizes of all pools were obtained by running each model with the monthly inputs for the first 2 years repeated until all pools reached steady state (i.e. the change in pool size between two successive cycles is less than 0.01%).

Using the initial pool sizes for each model and the monthly input from 2002–2008, we numerically integrated both models and calculated the average contributions to total soil CO_2 efflux from the decomposition of litter and soil organic carbon for the last 2 years (2007–2008) and compared the simulated results with the estimates from field measurements by Sayer et al. (2011).

By tuning values of two model parameters (μ_{bR} and K_{bR}) (see Table 1), we obtained an initial microbial biomass carbon 240 g C m^{-2} for both models, very close to the measured microbial biomass carbon of 219 g C m^{-2} by Sayer et al. (2007). The simulated initial soil carbon is 6715 g C m^{-2} for model A and 6945 g C m^{-2} for model B, which is higher than the estimated soil carbon of 5110 g C m^{-2} in the top 25 cm (Cavelier et al., 1992) and lower than the estimated soil carbon of 9272 g C m^{-2} in the top 50 cm soil (Grimm, 2007).

The estimated total soil CO_2 efflux from the control treatment by Sayer et al. (2011) was $1008 \text{ g C m}^{-2} \text{ yr}^{-1}$ from 2007 to 2008, which was closely simulated by both models ($1004 \text{ g C m}^{-2} \text{ yr}^{-1}$ by model A and $1008 \text{ g C m}^{-2} \text{ yr}^{-1}$ by model B). However, both models overestimated the total soil CO_2 efflux from the litter addition treatment. The esti-

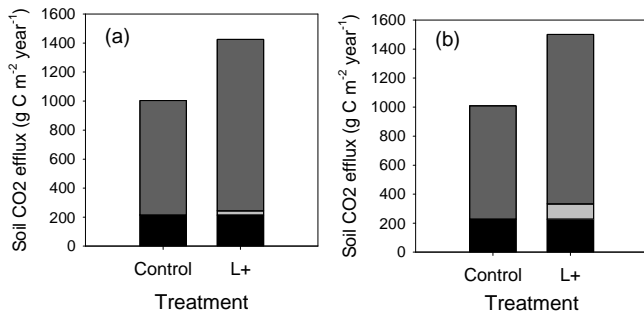


Figure 5. Simulated response of soil CO₂ efflux in control and litter addition (L+) experiments as described by Sayer et al. (2014) using model A (a) or B (b). The dark-grey bar and black bars represent CO₂ effluxes from litter and soil organic carbon decomposition, respectively. The light-grey bar for the litter addition treatment represents the additional CO₂ efflux from soil organic carbon decomposition due to additional litter input.

mated efflux by Sayer et al. (2011) was $1380 \text{ g C m}^{-2} \text{ yr}^{-1}$, as compared with the simulated flux of $1425 \text{ g C m}^{-2} \text{ yr}^{-1}$ by model A and $1502 \text{ g C m}^{-2} \text{ yr}^{-1}$ by model B (see Fig. 5).

The additional CO₂ efflux from the decomposition of soil carbon in the litter addition treatment was estimated to be $180 \pm 50 \text{ g C m}^{-2} \text{ year}^{-1}$ by Sayer et al. (2011), which was quite well simulated by model B ($105 \text{ g C m}^{-2} \text{ yr}^{-1}$) (see Fig. 5b) but was underestimated by model A ($29 \text{ g C m}^{-2} \text{ yr}^{-1}$) (see Fig. 5a).

The difference in the simulated response of soil organic carbon decomposition to increased litter input by the two models can be explained by differences in their substrate kinetics. The rate of carbon loss from the decomposition of soil carbon depends on both soil carbon and microbial biomass in both models. Because soil carbon is unlikely to change significantly within a few years, the rate of CO₂ emission from soil carbon decomposition will largely depend on microbial biomass, and that dependence is nonlinear following the reverse Michaelis–Menten equation in model A (see Eq. 2), but is linear in model B (see Eq. 7). Therefore the simulated response of soil organic carbon decomposition to increased litter input by model B is more sensitive to microbial biomass than model A.

3.4 Response to priming: maximum CO₂ efflux from soil carbon decomposition

Results from the above comparison of the responses of two models to the increased litter input are likely dependent on soil temperature, carbon input, and model parameter values. To understand the differences in the responses of our two models to litter addition at different rates and soil temperatures for any parameter value, we use the analytic approximations to maximum CO₂ efflux from the priming treatment for each model to identify key differences in their response to priming.

Priming is defined as the change in organic carbon decomposition rate after the addition of an easily decomposable organic substance to soil (Kuzyakov et al., 2000). In lab priming experiments, a given amount of isotopically labelled C substrate is added to the primed treatment only at the beginning of the experiment ($t = 0$) and no substrate is added to the control. CO₂ effluxes from soil carbon decomposition are estimated from measurements for the following weeks or longer (Cheng et al., 2014). The effect of priming, p , is calculated as $(R_p - R_c)/R_c$, where R_c and R_p are the CO₂ efflux from the decomposition of soil organic carbon in the control and primed treatments, respectively. Maximum values of p are usually reported in most priming studies (see Cheng et al., 2014).

However, analytic approximations to p for both models are quite cumbersome for analysing their differences in the responses to priming. Another way to quantify the priming effect is by measuring the maximum CO₂ efflux from soil organic carbon decomposition after carbon addition at time $t = 0$ (Jenkinson et al., 1985; Kuzyakov et al., 2000). This quantity can be easily measured in the laboratory or field.

In both models, the equilibrium soil microbial biomass is proportional to carbon input (see Eqs. 11 and 13). In the primed treatment, the amount of carbon added at $t = 0$ usually is well above the rate of the carbon input under natural conditions, and no further carbon is added. Therefore the microbial biomass will increase until reaching a maximum value, then decreases with time after $t = 0$.

As shown in Appendix C, the maximum CO₂ efflux from soil carbon decomposition in the primed treatment, F_{max} , depends on the maximum microbial biomass and microbial growth efficiency for both models, as well as on soil carbon turnover rate for model A (see Eq. C12 for F_A) and the microbial turnover rate for model B (see Eq. C15 for F_B).

Figure 6 shows that F_{max} (or F_A for model A, F_B for model B) increases with carbon input, and decreases with an increase in soil temperature for both models. However, the sensitivity of F_{max} to carbon input at different soil temperatures is different between the two models. For model A, the sensitivity of F_{max} to carbon input is greatest around 25°C , and is quite small at $<5^\circ\text{C}$. For model B, the sensitivity of F_{max} to carbon input decreases with an increase in soil temperature (see Fig. 6).

The sensitivity of F_{max} to soil temperatures in both models can be explained by the analytic approximations (Eq. C12 for model A and C15 for model B). Maximum CO₂ efflux is proportional to soil carbon in model A, and to the maximum microbial biomass in model B. Both soil carbon and maximum microbial biomass in both models decrease with an increase in soil temperature for the parameter values we used (see Fig. 6c); therefore F_{max} also decreases with an increase in soil temperature.

Differences in the sensitivity of F_{max} to carbon input at different soil temperatures in the two models can also be explained by their respective analytic approximations, par-

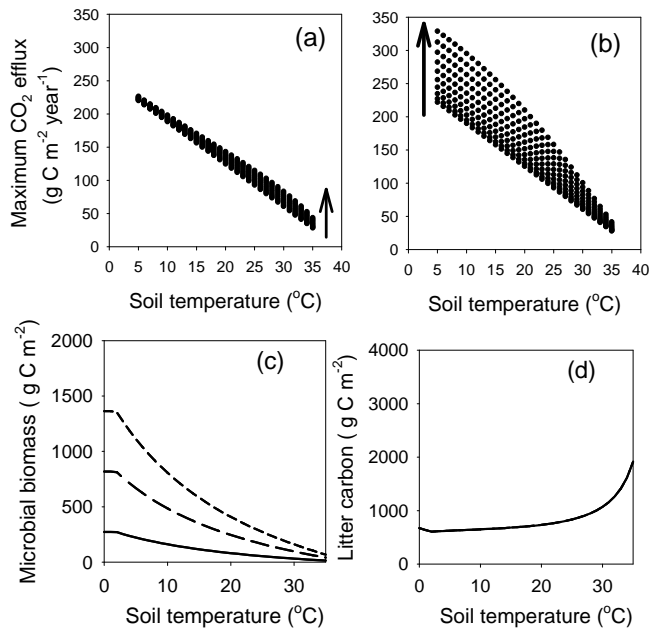


Figure 6. Dependence of maximum rate of CO₂ efflux from the decomposition of soil carbon in the primed treatment (F_{\max}) as a function of soil temperature and carbon addition at time $t = 0$ for model A (a) and B (b). At each soil temperature, the carbon input was varied from 100 to 1000 g C m⁻², and F_{\max} increases with an increase in carbon input as shown by the arrow in each plot. (c) Variation in equilibrium soil microbial biomass with soil temperature and carbon input at 200 (solid black line), 600 (long-dashed line), and 1000 (short-dashed line) g C m⁻² yr⁻¹ for model A. (d) Variation in equilibrium litter carbon with soil temperature in model B.

ticularly the dependence of maximum microbial biomass on both carbon input and initial microbial biomass in model A (see Eq. C11) and on equilibrium litter carbon pool size in model B (see Eq. C14), because F_{\max} depends on the maximum microbial biomass in both models. In model A, F_A nonlinearly varies with maximum microbial biomass (see Eq. C12), which increases linearly with carbon addition at $t = 0$ (ΔC_1) and varies nonlinearly with the initial pool size of microbial biomass (C_b^*) (see Eq. C11). Because C_b^* increases with a decrease in soil temperature or an increase in ΔC_1 (see Fig. 6c), F_A increases with an increase in ΔC_1 (either directly (Eq. C11) or via the effect on C_b^*), and with a decrease in soil temperature (via the temperature dependence of C_b^*).

In model B, the sensitivity of F_B to carbon input is determined by the maximum microbial biomass ($C_{b\max, B}$), which varies with equilibrium litter pool size (C_1^*) following the regular Michaelis–Menten equation ($C_{b\max, B} \propto M_1$ in Eq. C14) for a given amount of carbon input (ΔC_1). The equilibrium litter carbon pool size increases with soil temperature, and is independent of carbon input based on Eq. (12) (see Fig. 6d). When soil temperature is low, C_1^* is low, and therefore sensitivity of F_B to carbon input is high. When

soil temperature is high, C_1^* is high and the sensitivity of F_B in model B to carbon input is low because of saturating response in the regular Michaelis–Menten equation.

4 Discussion

Here we analysed the responses of different carbon pools to perturbation, soil warming, and increased carbon input in two nonlinear microbial soil carbon models. Table 2 lists the key differences in those responses.

Some of the differences between the two models also depend on the chosen parameter values for each model. For example, there has been debate about the temperature sensitivities of microbial biomass turnover rate and microbial growth efficiency (Frey et al., 2013; Hargerty et al., 2014), and the simulated sensitivity of soil carbon to warming (Hargerty et al., 2014). Regardless of the temperature sensitivity of microbial growth efficiency, model A always simulates a decrease in the equilibrium soil carbon under warming, whereas model B can simulate an increase or a decrease in the equilibrium soil carbon under warming, depending on the temperature sensitivities of microbial growth efficiency and turnover rate. If microbial growth efficiency is sensitive to soil temperature and microbial turnover rate is not, as found by Frey et al. (2013), the simulated responses of equilibrium soil carbon to warming by the two nonlinear models are quite similar in the direction of response over temperate and boreal regions, but different in the tropical regions. This is because the minimum soil carbon temperature, T_x , for model B is about 25 °C for $x = 0.015 \text{ K}^{-1}$ and $a = 0.05$, the values used by Allison et al. (2010) and German et al. (2012) (see Fig. 3a). In that case the equilibrium soil carbon, as simulated by model B, will decrease over most temperate and boreal regions, for which the mean soil temperature within the rooting zone is below 25 °C for most of the growing season, and will increase in tropical regions, for which the mean soil temperature in the top 100 cm of soil is close to 25 °C for most of the year. However, if microbial turnover rate is sensitive to soil temperature and microbial growth efficiency is not, as found by Hargerty et al. (2014), then T_x is $< 0 \text{ °C}$ at $\alpha_s > 0.055 \text{ (°C)}^{-1}$ for model B, causing equilibrium soil carbon to increase in model B with warming, but decrease in model A with warming. Therefore, the predicted responses of soil carbon to warming by the two nonlinear models differ significantly across all major global biomes where mean rooting zone soil temperature over the growing season is above 0 °C.

Some of the key differences in the responses of the two nonlinear models can be used to discern which model is more applicable to the real world. For example, the oscillatory response of model A generally is quite small (<1%), which is quite consistent with the results from litter removal experiments (Sayer et al., 2007, for example). The relatively large and more persistent oscillation in model B has not been observed in the field, and the insensitivity of soil carbon to

Table 2. Key differences between the two nonlinear soil microbial models.

Response to	Model A	Model B
Pool size perturbation	More frequent and faster oscillations in litter and microbial carbon pools Soil carbon pool may oscillate	Less frequent and slower oscillations in litter and microbial carbon pools Soil carbon pool does not oscillate
Warming	Soil carbon pool always decreases	Soil carbon may increase or decrease
Carbon input	Sensitivity of maximum CO ₂ efflux increases with soil temperature	Sensitivity of maximum CO ₂ efflux decreases with soil temperature

a perturbation in the litter or soil microbial carbon pool in model B also needs to be assessed against long-term field experiments such as the DIRT experiment (Nadelhoffer et al., 2004). Model B in its present form may not be applicable under field conditions. It has been argued that the influences of microbial community structure and their activities on mineral soil carbon decomposition at field scale may be much smaller than at the rhizosphere scale (Schimel and Schaeffer, 2012), because substrate concentration rather microbial activity is the rate-limiting step for the decomposition of soil organic matter in mineral soils. A recent study by Sulman et al. (2014) clearly showed the importance of physical protection of microbial by-products in forming stable soil organic matter, and its implications for the response of global soil carbon to carbon inputs. This mechanism has been recently incorporated into a nonlinear soil microbial carbon model (Wieder et al., 2014). Whether the large oscillatory responses of model B will be significantly dampened by the addition of such physical protection mechanism is yet to be studied.

The two models also have quite different sensitivities to soil warming (see Table 2), particularly in warm regions. Results from a decade-long soil-warming experiment showed that warming did not reduce soil carbon, because plant carbon production increased as a result of the increased availability of soil mineral nitrogen in a nitrogen-limited forest (Melillo et al., 2002). However, this is quite a different mechanism because model B in our study includes neither a nitrogen cycle nor the response of carbon input to warming.

Overall both models can simulate the priming response to a change in carbon inputs, although model A simulates a weaker response than model B and the sensitivities to carbon input at different soil temperature are different between the two models, particularly under cool climate conditions (see Table 2). So far, results from litter manipulation experiments in the field have not been analysed for their sensitivity to soil temperature. The differences in the responses of soil carbon decomposition to an increased carbon input we identified between the two models can also be used to assess which model is more applicable in the field using experiments with different carbon input under cool (mean annual air temperature < 10 °C) and warm (mean annual temperature > 20 °C)

conditions. If the sensitivity of soil carbon decomposition to an increased carbon input under cool conditions is greater than that under warm conditions, then model B is more appropriate than model A. This has yet to be tested.

Our analysis here does not include some other key processes, such as the transformations of different forms of organic carbon substrates by different microbial communities as included in some models (see Grant, 2014; Riley et al., 2014, for example). Therefore the conclusions from this study about the two nonlinear models should be interpreted with some caution. As shown by Tang and Riley (2014), interactions among soil mineral sorption, carbon substrate, and microbial processes can generate transient changes in the apparent sensitivity of soil carbon decomposition to soil temperature; therefore the static dependence of microbial processes on soil temperature as used in our study may not be applicable. Our simplification of the soil microbial community and soil carbon fractions is necessary for analytic tractability, but may also limit the applicability of our results to field experiments. For example, Allison (2012) showed that the apparent kinetics of soil carbon decomposition can vary with the spatial scale: the regular Michaelis–Menten kinetics at microsites coupled with an explicit representation of different strategies for facilitation and competition among different microbial taxa generated litter carbon decomposition kinetics similar to the reverse Michaelis–Menten equation. Therefore, the identified differences between the two models should vary with spatial scale.

The regular and reverse Michaelis–Menten kinetics can be considered as two special cases of a more general kinetics, as discussed by Tang (2015). Both models use different mass balance constraints (see Tang, 2015), which are unlikely to hold across a wide range of conditions. In the real world, the kinetics and parameter values of carbon decomposition likely depend on a number of other factors, such as soil physical properties, substrate quality, and soil nutrient availability (Manzoni and Porporato, 2009). Future studies of soil carbon decomposition kinetics need to include those factors and the role of root growth dynamics and photosynthetic activities in rhizosphere priming (see Kuzakov, 2002).

Finally, both models have a number of parameters, and their values are largely based on laboratory studies (Allison

et al., 2010). The values of those parameters may be quite different under field conditions. Evaluation of their applicability under a wide range of field conditions will require an integrated approach, such as applications of model–data fusion using a range of field experiments (Wieder et al., 2016). This will eventually lead to a better understanding of the significance of microbial activity on soil carbon decomposition and more accurate predictions of carbon–climate interactions.

5 Conclusions

This study analysed the mathematical properties of two nonlinear microbial soil carbon models and their responses to soil warming and carbon input. We found that the model using the reverse Michaelis–Menten kinetics (model A) has shorter and more frequent oscillations than the model using regular Michaelis–Menten kinetics (model B) in response to a small perturbation.

The responses of soil carbon to warming can be quite different between the two models. Under global warming, model A always simulates a decrease in soil carbon, but model B will likely simulate a decrease in soil carbon in temperate and boreal regions, and an increase in soil carbon in tropical regions, depending on the sensitivities of microbial growth efficiency and microbial biomass turnover rate.

The response to carbon input varies with soil temperature in both models. The simulated maximum response to priming by model A generally is smaller than that by model B. The maximum rate of CO₂ efflux from SOC decomposition (F_{\max}) to carbon input in the primed treatment decreases with an increase in soil temperature in both models, and the sensitivity of F_{\max} to the amount of carbon input increases with soil temperature in model A but decreases monotonically with an increase in soil temperature in model B.

Based on those differences between the two models, we can design laboratory or field experiments to assess which model is more applicable in the real world and, therefore, advance our understanding of the importance of microbial processes at regional to global scales.

Appendix A: Stability analysis of model A

The Jacobian at the equilibrium pool sizes, J , is given by

$$\mathbf{J} = \begin{pmatrix} -a_1 & -a_3 & 0 \\ \varepsilon a_1 & \varepsilon(a_3 + a_4) - \mu_b & \varepsilon a_2 \\ 0 & \mu_b - a_4 & -a_2 \end{pmatrix} \quad (\text{A1})$$

where $a_1 = \mu_l g$, $a_2 = \mu_s g$, $a_3 = \mu_l C_1^* \frac{\partial g}{\partial C_b} |_{C_b=C_b^*}$, $a_4 = \mu_s C_s^* \frac{\partial g}{\partial C_b} |_{C_b=C_b^*}$

$g = \frac{C_b}{C_b^* + K_b}$, $\frac{\partial g}{\partial C_b} |_{C_b=C_b^*} = \frac{K_b}{(C_b^* + K_b)^2}$, and C_1^* , C_b^* , and C_s^* are the equilibrium pool sizes of litter carbon, microbial biomass, and soil carbon in g C m^{-2} , respectively.

The three eigenvalues of J are given by

$$\begin{pmatrix} \lambda_1 \\ \lambda_2 \\ \lambda_3 \end{pmatrix} \approx \begin{pmatrix} \frac{-C_b^*(\mu_b + \mu_l) + \sqrt{C_b^* F_\Delta}}{2(C_b^* + K_b)} \\ \frac{-C_b^*(\mu_b + \mu_l) - \sqrt{C_b^* F_\Delta}}{2(C_b^* + K_b)} \\ -\mu_s g \end{pmatrix}, \quad (\text{A2})$$

where $F_\Delta = C_b^*(\mu_b - \mu_l)^2 - 4\mu_b\mu_l K_b(1 - \varepsilon)$.

These correspond to three carbon pools (λ_1 for litter carbon, λ_2 for microbial biomass, and λ_3 for soil carbon). If the eigenvalue of a carbon pool is complex, then the response of that pool to a small perturbation is oscillatory, or monotonic otherwise. If the real part of the eigenvalue is negative, then the response is stable. Therefore, the responses of all three carbon pools to a small perturbation are monotonic if $F_\Delta > 0$ or $F_{\text{NPP}} > 4 \frac{(1-\varepsilon)^2}{\varepsilon} \frac{\mu_l \mu_b^2}{(\mu_b - \mu_l)^2} K_b$, or oscillatory otherwise (or $F_\Delta < 0$). The responses of all carbon pools are always stable because $\frac{-C_b^*(\mu_b + \mu_l)}{2(C_b^* + K_b)} < 0$.

The corresponding eigenvectors of J are given by

$$(v_1 v_2 v_3) \approx \begin{pmatrix} A + B\sqrt{C_b^* F_\Delta} & A - B\sqrt{C_b^* F_\Delta} & 0 \\ \frac{-C_b^*(\mu_b + \mu_l - 2\mu_s) + \sqrt{C_b^* F_\Delta}}{2\mu_b C_b^*} & \frac{-C_b^*(\mu_b + \mu_l - 2\mu_s) - \sqrt{C_b^* F_\Delta}}{2\mu_b C_b^*} & 0 \\ 1 & 1 & 1 \end{pmatrix}, \quad (\text{A3})$$

where $A = -\frac{(\mu_b - \mu_l)(\mu_l - \mu_s)}{2\varepsilon\mu_b\mu_l} - (\varepsilon^{-1} - 1)\frac{K_b}{C_b^*}$

$$B = \frac{\mu_l - \mu_s}{2\varepsilon\mu_b\mu_l C_b^*}.$$

When the responses of carbon pools to a small perturbation are oscillatory and stable, the amplitude of oscillation decreases exponentially after $t = 0$. The oscillatory response can be characterized by its half-life ($t_{0.5}$) and period (p) (both in years) calculated from their eigenvalues. The amplitude of a stable oscillation decreases exponentially over time, and time when the amplitude is half as much as the amplitude at

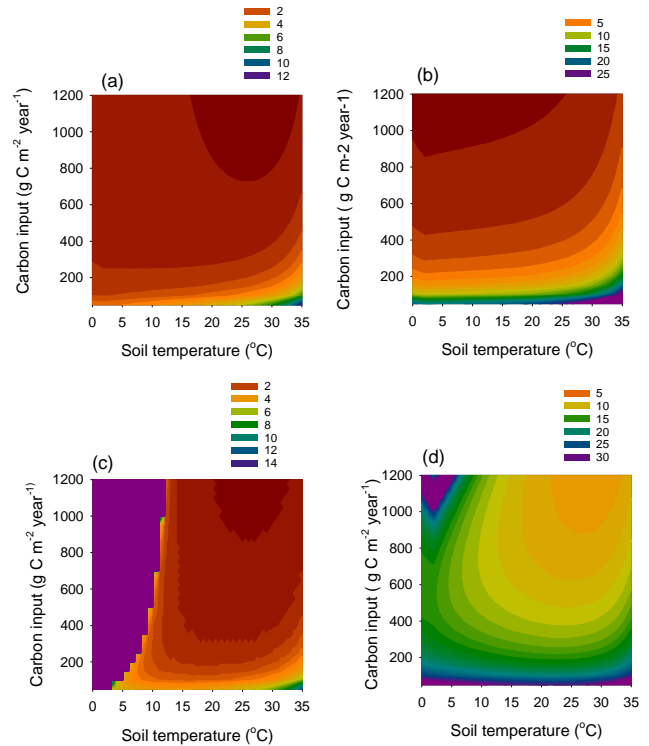


Figure A1. Half-life (a, b) and period (c, d) for model A (a, c) and B (b, d). The unit is year for both half-life and period. Note the difference scales used for model A from model B for both half-time and period. The purple region represents non-oscillatory region for model A in (c), and a period greater than 30 years for model B in (d). We assumed that $a = 0$ for all calculations.

$t = 0$ is defined as $t_{0.5}$. $t_{0.5}$ and p are calculated for model A as

$$t_{0.5} = -\frac{\ln(2)}{\frac{-C_b^*(\mu_b + \mu_l)}{2(C_b^* + K_b)}} = \frac{2\ln(2)(C_b^* + K_b)}{C_b^*(\mu_b + \mu_l)}, \quad (\text{A4})$$

$$p = \frac{2\pi}{\frac{\sqrt{-C_b^* F_\Delta}}{2(C_b^* + K_b)}} = \frac{2\pi(C_b^* + K_b)}{\sqrt{-C_b^* F_\Delta}}, \quad (\text{A5})$$

Wang et al. (2014) gave the formulae for $t_{0.5}$ and p for model B (their Eqs. 24 and 25).

As shown in Fig. A1, the half-life is longest for both models when soil temperature is high and carbon input is low, conditions often experienced in arid ecosystems, implying a strong oscillation at these conditions. At a given soil temperature and carbon input, the half-life for model A is about half as much as that for model B (see Appendix Fig. A1a and b). When carbon input is $> 1000 \text{ g C m}^{-2} \text{ yr}^{-1}$, as in tropical rainforests, the half-life is less than 1 year for model A at a soil temperature between 20 and 30°C , and for model B at a soil temperature between 0 and 20°C only.

Over the range of realistic carbon inputs and soil temperatures, the values of both $t_{0.5}$ and p of model A are less than

half as much as those of model B (see Fig. A1). Therefore the responses of carbon pool sizes to a small perturbation in model A oscillate faster and those oscillations also dampen faster than model B.

As shown by Wang et al. (2014) (their Appendix B, Eq. B1; there a_i is eigenvalue and v_i is eigenvector), the evolution of each carbon pool after a small perturbation can be mathematically represented using the eigenvalues, eigenvectors and initial pool sizes (Eq. B1 in Appendix B of Wang et al., 2014). The third elements of the eigenvectors corresponding to litter carbon (v_1 in Eq. A3) and microbial biomass (v_2 in Eq. A3) represent the influences of those two carbon pools at any time on soil carbon. Because those elements are equal to 1 (see the matrix in Eq. A3), the oscillation of litter carbon and microbial biomass will also cause the response of soil carbon to be oscillatory, although the oscillation is small and dampens very quickly. In model B, the third elements of the eigenvectors corresponding to litter carbon and microbial biomass are zero (see the bottom row of the matrix in Eq. A4 of Wang et al., 2014) and therefore oscillatory responses of litter carbon and microbial biomass have no effect on the response of soil carbon. The eigenvalue of the soil carbon in model B is negative real; therefore the response of soil carbon to a small perturbation always is monotonic and stable in model B (see Appendix A in Wang et al., 2014).

Appendix B: Soil temperature at which equilibrium soil carbon pool is minimum (T_x)

The steady-state soil carbon pool size of model A is

$$C_s^* = \left(a + \frac{1}{\varepsilon^{-1} - 1} \right) \frac{F_{npp}}{\mu_s} + \left(1 + a \left(\varepsilon^{-1} - 1 \right) \right) \frac{\mu_b K_b}{\mu_s}. \tag{B1}$$

The first term on the right-hand side of Eq. (B1) always decreases with an increase in T_s , and the second term has two parts: $(1 + a(\varepsilon^{-1} - 1))$ and $\frac{\mu_b K_b}{\mu_s}$. Because both K_b and μ_s increase with T_s exponentially, and the sensitivity μ_s to T_s is much greater than K_b , $\frac{K_b}{\mu_s}$ always decreases with an increase in T_s , and that decrease is much greater than the increase in $(1 + a(\varepsilon^{-1} - 1))$ with T_s . As a result, the second term also decreases with an increase in soil temperature, independent of temperature sensitivity of μ_b . In summary for model A, $\frac{dC_s^*}{dT_s} < 0$.

The steady-state pool of soil carbon in model B is

$$C_s^* = \frac{K_s}{\frac{V_s}{\mu_b} \frac{\varepsilon}{\varepsilon + a(1-\varepsilon)} - 1}. \tag{B2}$$

Assuming that $\frac{V_s}{\mu_b} \frac{\varepsilon}{\varepsilon + a(1-\varepsilon)} \gg 1$, we can therefore approximate C_s^* as

$$C_s^* \approx \frac{K_s}{\frac{V_s}{\mu_b} \frac{\varepsilon}{\varepsilon + a(1-\varepsilon)}}$$

$$= \frac{K_{sR} \mu_{bR}}{V_{sR}} \exp[(\beta_k + b - \beta_v)(T_s - T_R)] \left[1 + a \left(\frac{1}{\varepsilon_0 - x(T_s - T_R)} - 1 \right) \right]. \tag{B3}$$

It can be easily shown that T_x can only exist only when $\beta_k + b - \beta_v \leq 0$ and $0 < a < 1$ and

$$T_x = T_R + \frac{\varepsilon_0 - z}{x} \tag{B4}$$

$$z = -0.5 \frac{a}{1-a},$$

$$+ 0.5 \sqrt{\left(\frac{a}{1-a} \right)^2 - 4 \left(\frac{a}{1-a} \right) \frac{x}{\beta_k + b - \beta_v}}, \tag{B5}$$

when $a = 0$, T_x does not exist and

$$\frac{dC_s^*}{dT_s} < 0; \text{ when } \beta_k + b - \beta_v \leq 0; \tag{B6}$$

$$\frac{dC_s^*}{dT_s} > 0; \text{ when } \beta_k + b - \beta_v > 0 \tag{B7}$$

for model B.

Appendix C: Derivation of an analytic approximation for the timing and magnitude of the maximum microbial biomass after priming

Both models can be used to simulate the response of soil carbon to priming by specifying different initial pool sizes for the primed and control treatments. The initial values are $C_1(t=0) = C_1^* + \Delta C_1$; $C_b(t=0) = C_b^*$ and $C_s(t=0) = C_s^*$ for the priming treatment; $C_1(t=0) = C_1^*$; $C_b(t=0) = C_b^*$ and $C_s(t=0) = C_s^*$ for the control.

Here we assume that all pools are at equilibrium just before the priming treatment at $t = 0$. C_1^* , C_b^* , and C_s^* are equilibrium pool sizes, and ΔC_1 is the amount of litter carbon added at time $t = 0$. No carbon is added to both treatments after $t = 0$.

The CO₂ efflux from soil carbon decomposition is calculated using Eq. (15) for model A and Eq. (16) for model B. Therefore we need to solve the three equations for C_b and C_s for $t > 0$. Observations show that maximum priming response occurs soon after priming treatment (Kuzyakov et al., 2000); therefore, maximum priming response can be considered as a short-timescale phenomenon. At a short timescale, C_s can be considered as being constant, and the maximum CO₂ efflux from the priming treatment will occur when the microbial biomass reaches a maximum after $t = 0$. Therefore we will use a second-order Taylor expansion to obtain the approximate solutions to the timing and magnitude of maximum CO₂ efflux from the soil carbon decomposition in the priming treatment for each model.

For model A, Eqs. (1) and (2) for both treatments after $t > 0$ becomes

$$\frac{dC_1}{dt} = -\mu_1 C_1 \frac{C_b}{C_b + K_b}, \tag{C1}$$

$$\frac{dC_s}{dt} = \mu_b C_b - \mu_s C_s \frac{C_b}{C_b + K_b}$$

. As the litter pool size at time $t = 0$ is above its equilibrium value, the microbial biomass will likely increase after $t = 0$ and then reach its maximum value.

Equations (C1), (C2), and (C3) can be simplified using variable substitution.

Let

$$\tilde{C}_b = \frac{C_b}{K_b}, \quad \tilde{C}_1 = \frac{C_1}{K_b} \frac{\mu_1}{\mu_b} \tilde{C}_s = \frac{C_s}{K_b} \frac{\mu_s}{\mu_b} \Delta \tilde{C}_1 = \frac{\Delta C_1}{K_b} \frac{\mu_1}{\mu_b},$$

$$\tau = t \mu_b, \quad a_1 = \frac{\mu_1}{\mu_b} a_2 = \frac{\mu_s}{\mu_b}, \quad a_3 = \frac{F_{NPP} \mu_1}{K_b \mu_b^2}.$$

Then those three equations can be written as

$$\frac{d\tilde{C}_1}{d\tau} = -a_1 \tilde{C}_1 \frac{\tilde{C}_b}{\tilde{C}_b + 1}, \quad (C2)$$

$$\frac{d\tilde{C}_s}{d\tau} = a_2 (\tilde{C}_b - \tilde{C}_s) \frac{\tilde{C}_b}{\tilde{C}_b + 1}, \quad (C3)$$

$$\frac{d\tilde{C}_b}{d\tau} = \varepsilon (\tilde{C}_1 + \tilde{C}_s) \frac{\tilde{C}_b}{\tilde{C}_b + 1} - \tilde{C}_b, \quad (C4)$$

with the initial pool sizes of $\tilde{C}_b(0) = \frac{a_3}{a_1} \frac{\varepsilon}{1-\varepsilon}$, $\tilde{C}_s(0) = \frac{a_3}{a_1} \left(\frac{\varepsilon}{1-\varepsilon} + a \right) + 1 + a \frac{1-\varepsilon}{\varepsilon}$ for both treatments, and $\tilde{C}_1(0) = (1-a) \left(\frac{a_3}{a_1} + \frac{1-\varepsilon}{\varepsilon} \right) + \Delta \tilde{C}_1$ for the primed treatment, and $\tilde{C}_1(0) = (1-a) \left(\frac{a_3}{a_1} + \frac{1-\varepsilon}{\varepsilon} \right)$ for the control treatment.

At relatively short timescales, $a_2 \ll 1$, $\tilde{C}_s(t) \rightarrow \tilde{C}_s(t=0)$. Microbial biomass carbon after $t = 0$ can be approximated using the second-order Taylor expansion (Abramowitz and Stegun, 1972)

$$\tilde{C}_b(t) = \tilde{C}_b(0) + t \tilde{C}_b'(0) + \frac{t^2}{2} \tilde{C}_b''(0). \quad (C5)$$

Differentiating both sides of Eq. (C5) with respect to t , we have

$$\tilde{C}_b'(t) = 0 + \tilde{C}_b'(0) + t \tilde{C}_b''(0). \quad (C6)$$

Assuming that \tilde{C}_b is maximum at $t = t_{\max,A}$, then $\tilde{C}_b'(t_{\max,A}) = 0$. Equation (C6) becomes

$$\tilde{C}_b'(t_{\max,A}) = \tilde{C}_b'(0) + t_{\max,A} \tilde{C}_b''(0) = 0. \quad (C7)$$

Both $\tilde{C}_b'(0)$ and $\tilde{C}_b''(0)$ can be obtained differentiating Eq. (C4) at $t = 0$, giving

$$\tilde{C}_b'(0) = \varepsilon \frac{\tilde{C}_b(0)}{1 + \tilde{C}_b(0)} \Delta \tilde{C}_1 \quad (C8)$$

$$\tilde{C}_b''(0) = -\varepsilon \frac{\tilde{C}_b(0)}{1 + \tilde{C}_b(0)} \Delta \tilde{C}_1 \left((1-a) \frac{a_3}{\Delta \tilde{C}_1} + (1+a_1) \frac{\tilde{C}_b(0)}{1 + \tilde{C}_b(0)} - \frac{\varepsilon \Delta \tilde{C}_1}{(1 + \tilde{C}_b(0))^2} \right). \quad (C9)$$

Substituting Eqs. (C8) and (C9) into (C7), and solving for $t_{\max,A}$, we have

$$t_{\max,A} = -\frac{1}{\mu_b} \frac{\tilde{C}_b'(0)}{\tilde{C}_b''(0)} = \frac{1}{(1-a) \frac{F_{NPP}}{\Delta C_1} + (\mu_b + \mu_1) \frac{C_b^*}{C_b^* + K_b} - \frac{\varepsilon K_b \mu_1 \Delta C_1}{(C_b^* + K_b)^2}}. \quad (C10)$$

Substituting Eq. (C10) into (C5), we have the maximum microbial biomass at $t_{\max,A}$, or $C_{b \max,A}$ for the primed treatment as follows:

$$C_{b \max,A} = K_b \tilde{C}_b(t_{\max,A}) = C_b^* + \frac{t_{\max,A}}{2} \frac{\varepsilon C_b^*}{C_b^* + K_b} \mu_1 \Delta C_1. \quad (C11)$$

The maximum rate of CO₂ release from decomposition of soil organic carbon, F_{CO_2} at $t = t_{\max,A}$ is given by

$$F_A = (1-\varepsilon) \mu_s C_s \frac{C_{b \max,A}}{C_{b \max,A} + K_b}. \quad (C12)$$

Similarly we derived the approximations for the timing ($t_{\max,B}$) and magnitude of maximum microbial biomass ($C_{b \max,B}$) in the primed treatment at $t > 0$ as

$$t_{\max,B} = \frac{1}{\frac{\varepsilon K_1 C_b^*}{(\varepsilon M_1 - (1-a)(1-\varepsilon)\mu_b)} \frac{(C_b^* + \Delta C_1)(V_1)^2}{(C_b^* + \Delta C_1 + K_1)^3} - (\varepsilon M_1 - (1-a)(1-\varepsilon)\mu_b)}, \quad (C13)$$

$$C_{b \max,B} = C_b^* (1 + 0.5 t_{\max,B} (\varepsilon M_1 - (1-a)(1-\varepsilon)\mu_b)). \quad (C14)$$

where

$$M_1 = \frac{V_1 (C_b^* + \Delta C_1)}{C_b^* + \Delta C_1 + K_1}.$$

The rate of CO₂ release from decomposition of soil carbon, F_B , for model B at time $t = t_{\max,B}$ is given by

$$F_B = (1-\varepsilon) C_{b \max,B} \frac{V_s C_s}{C_s + K_s} \approx (1-\varepsilon) \mu_b C_{b \max,B}. \quad (C15)$$

Comparison with numerical simulations shows that the relative error of Eq. (C12) is $< 3\%$ across soil temperature and carbon input within their realistic ranges. However, errors in Eq. (C15) for model B can be quite large, particularly at high carbon input. Equation (C15) is only reasonably accurate (relatively error $< 10\%$) at low carbon input $< 700 \text{ g C m}^{-2}$.

Acknowledgements. This work was assisted through participation of the authors in the working group Nonautonomous Systems and Terrestrial Carbon Cycle, at the National Institute for Mathematical and Biological Synthesis, an institute sponsored by the National Science Foundation, the US Department of Homeland Security, and the US Department of Agriculture through NSF award no. EF-0832858, with additional support from the University of Tennessee, Knoxville. We are grateful for the constructive comments from the associate editor and three reviewers. Source code and data used in this study are available on request by email (yingping.wang@csiro.au).

Edited by: E. Pendall

References

- Abramowitz, M. and Stegun, I. A. (Eds.): Handbook of Mathematical Functions with Formulas, Graphs, and Mathematical Tables, 9th printing, New York, Dover, p. 880, 1972.
- Allison, S. D.: A trait-based approach for modelling microbial litter decomposition, *Ecol. Lett.*, 15, 1058–1070, 2012.
- Allison, S. D., Wallenstein, M. D., and Bradford, M. A.: Soil-carbon response to warming dependent on microbial physiology, *Nat. Geosci.*, 3, 336–340, 2010.
- Bradford, M. A., Davies, C. A., Frey, S. D., Maddox, T. R., Melillo, J. M., Mohan, J. E., Reynolds, J. F., Treseder, K. K., and Wallenstein, M. D.: Thermal adaptation of soil microbial respiration to elevated temperature, *Ecol. Lett.*, 11, 1316–1327, 2008.
- Cavelier, J.: Fine-root biomass and soil properties in a semideciduous and a lower montane rain forest in Panama, *Plant Soil*, 142, 187–201, 1992.
- Cheng, W., Parton, W. J., Gonzalez-Meler, M. A., Phillips, R., Asao, S., McNickle, G. G., Brzostek, E., and Jastrow, J. D.: Synthesis and modeling perspectives of rhizosphere priming, *New Phytol.*, 201, 31–44, 2014.
- Drake, J. E., Darby, B. A., Giasson, M. A., Kramer, M. A., Phillips, R. P., and Finzi, A. C.: Stoichiometry constrains microbial response to root exudation: insights from a model and a field experiment in a temperate forest, *Biogeosciences*, 10, 821–838, doi:10.5194/bg-10-821-2013, 2013.
- Drazin, P. G.: *Nonlinear Systems*, Cambridge University Press, Cambridge, p. 317, 1992.
- Fontaine, S. and Barot, S.: Size and functional diversity of microbe populations control plant persistence and long-term soil carbon accumulation, *Ecol. Lett.*, 8, 1075–1087, 2005.
- Fontaine, S., Bardoux, G., Abbadie, L., and Mariotti, A.: Carbon input to soil may decrease soil carbon content, *Ecol. Lett.*, 7, 314–320, 2004.
- Fontaine, S., Barot, S., Barre, P., Bdioui, N., Mary, B., and Rumpel, C.: Stability of organic carbon in deep soil layers controlled by fresh carbon supply, *Nature*, 450, 277–281, 2007.
- Frey, S. D., Lee, J., Melillo, J. M., and Six, J.: The temperature response of soil microbial efficiency and its feedback to climate, *Nat. Clim. Change*, 3, 395–398, 2013.
- Fujita, Y., Witte, J. M., and van Bodegom, P. M.: Incorporating microbial ecology concepts into global soil mineralization models to improve predictions of carbon and nitrogen fluxes, *Global Biogeochem. Cy.*, 28, 223–238, 2014.
- German, D. P., Marcelo, K. R. B., Stone, M. M., and Allison, S. D.: The Michaelis–Menten kinetics of soil extracellular enzymes in response to temperature: a cross-latitudinal study, *Glob. Change Biol.*, 18, 1468–1479, 2012.
- Grant, R. F.: Nitrogen mineralization drives the response of forest productivity to soil warming: Modelling in *ecosys* vs. measurements from the Harvard soil heating experiment, *Ecol. Modell.*, 288, 38–46, 2014.
- Grimm, R.: *Soil-landscape modelling of Barro Colorado Island with special emphasis on soil organic carbon and clay mineralogy*, University of Potsdam, Potsdam, Germany, 2007.
- Hagerty, S. B., van Groenigen, K. J., Allison, S. D., Hungate, B. A., Schwartz, E., Koch, G. W., Kolka, R. K., and Dijkstra, P.: Accelerated microbial turnover but constant growth efficiency with warming in soil, *Nat. Clim. Change*, 4, 903–906, 2014.
- Jenkinson, D. S., Fox, R. H., and Rayner, J. H.: Interactions between fertilizer nitrogen and soil nitrogen—the so-called “priming” effect, *J. Soil Sci.*, 36, 425–444, 1985.
- Jenkinson, D. S., Adams, D. E., and Wild, A.: Model estimates of CO₂ emissions from soil in response to global warming, *Nature*, 351, 304–306, 1991.
- Jones, C. and Falloon, P.: Sources of uncertainty in global modelling of future soil organic carbon storage, in: *Uncertainties in environmental modelling and consequences for policy making*, edited by: Baveye, P., Myslak, J. and Laba, M., NATO Science for peace and security series C, Springer, Dordrecht, 283–315, 2009.
- Kuzyakov, Y.: Review: factors affecting rhizosphere priming effects, *J. Plant Nutr. Soil Sci.*, 165, 382–396, 2002.
- Kuzyakov, Y., Friedelb, J. K., and Stahr, K.: Review of mechanisms and quantification of priming effects, *Soil Biol. Biochem.*, 32, 1485–1498, 2000.
- Li, J. W., Wang, G., Allison, S. D., Mayes, M. A., and Luo, Y. Q.: Soil carbon sensitivity to temperature and carbon use efficiency compared across microbial-ecosystem models of varying complexity, *Biogeochemistry*, 119, 67–84, 2014.
- Luo, Y. Q., Wan, S. Q., Hui, D. F., and Wallace, L. L.: Acclimatization of soil respiration to warming in a tall grass prairie, *Nature*, 413, 622–625, 2001.
- Manzoni, S. and Porporato, A.: A theoretical analysis of nonlinearities and feedbacks in soil carbon and nitrogen cycles, *Soil Biol. Biochem.*, 39, 1542–1556, 2007.
- Manzoni, S. and Porporato, A.: Soil carbon and nitrogen mineralization: Theory and models across scales, *Soil Biol. Biochem.*, 41, 1355–1379, 2009.
- Manzoni, S., Porporato, A., D’Odorico, P., Laio, F., and Rodriguez-Iturbe, I.: Soil nutrient cycles as a nonlinear dynamic system, *Non. Proc. Geophys.*, 11, 589–598, 2004.
- Melillo, J. M., Steudler, P. A., Aber, J. D., Newkirk, K., Lux, H., Bowles, F. P., Catricala, C., Magill, A., Ahrens, T., and Morrisseau, S.: Soil warming and carbon-cycle feedbacks to the climate system, *Science*, 298, 2173–2176, 2002.
- Nadelhoffer, K. J., Boone, R. D., Bowden, R. D., Canary, J., Kaye, J., Micks, P., Ricca, A., McDowell, W., and Aitkenhead, J.: The DIRT experiment, Litter and root influences on forest soil organic matter stocks and function, in: *Forests in Time*, edited by: Foster, D. R. and Aber, J. D., Yale University Press, New Haven, 2004.
- Parnas, H.: Model for decomposition of organic material by microorganisms, *Soil Biol. Biochem.*, 7, 161–169, 1978.

- Parnas, H.: A theoretical explanation of the priming effect based on microbial growth with two limiting substrates, *Soil Biol. Biochem.*, 8, 139–144, 1979.
- Raupach, M. R.: Dynamics of resource production and utilisation in two-component biosphere-human and terrestrial carbon systems, *Hydrol. Earth Syst. Sci.*, 11, 875–889, doi:10.5194/hess-11-875-2007, 2007.
- Riley, W. J., Maggi, F., Kleber, M., Torn, M. S., Tang, J. Y., Dwivedi, D., and Guerry, N.: Long residence times of rapidly decomposable soil organic matter: application of a multi-phase, multi-component, and vertically resolved model (BAMS1) to soil carbon dynamics, *Geosci. Model Dev.*, 7, 1335–1355, doi:10.5194/gmd-7-1335-2014, 2014.
- Roberts, D. V.: *Enzyme Kinetics*, Cambridge University Press, Cambridge, UK.
- Sayer, E. J. and Tanner, E. V. J.: Experimental investigation of importance of litterfall in lowland semi-evergreen tropical forest nutrient cycling, *J. Ecol.*, 98, 1052–1062, 2010a.
- Sayer, E. J. and Tanner, E. V. J.: A new approach to trenching experiments for measuring root-rhizosphere respiration in a lowland tropical forest, *Soil Biol. Biochem.*, 42, 347–352, 2010b.
- Sayer, E. J., Powers, J. S., and Tanner, E. V. J.: Increased litterfall in tropical forests boosts the transfer of soil CO₂ to the atmosphere, *PLoS ONE*, 2, e1299, doi:10.1371/journal.pone.0001299, 2007.
- Sayer, E. J., Heard, M. S., Grant, H. K., Marthews, T. R., and Tanner, E. V. J.: Soil carbon release enhanced by increased tropical forest litterfall, *Nat. Clim. Change*, 1, 304–307, 2011.
- Schimel, J. and Schaeffer, S. M.: Microbial control over carbon cycling in soil, *Front. Microbiol.*, 3, 348, doi:10.3389/fmicb.2012.00348, 2012.
- Schimel, J. P. and Weintraub, M. N.: The implications of exoenzyme activity on microbial carbon and nitrogen limitation in soil: a theoretical model, *Soil Biol. Biochem.*, 35, 549–563, 2003.
- Smith, O. L.: An analytic model of the decomposition of soil organic matter, *Soil Biol. Biochem.*, 11, 585–505, 1979.
- Sulman, B. N., Phillips, R. P., Oishi, A. C., Shevliakova, E., and Pacala, S. W.: Microbe driven turnover offsets mineral-mediated storage of soil carbon under elevated CO₂, *Nat. Clim. Change*, 4, 1099–1102, 2014.
- Tang, J. and Riley, W.: Weaker soil carbon-climate feedbacks resulting from microbial and abiotic interactions, *Nat. Clim. Change*, 5, 56–60, 2015.
- Tang, J. Y.: On the relationships between the Michaelis-Menten kinetics, reverse Michaelis-Menten kinetics, equilibrium chemistry approximation kinetics, and quadratic kinetics, *Geosci. Model Dev.*, 8, 3823–3835, doi:10.5194/gmd-8-3823-2015, 2015.
- Wang, Y. P., Chen, B. C., Wieder, W. R., Leite, M., Medlyn, B. E., Rasmussen, M., Smith, M. J., Augusto, F. B., Hoffman, F., and Luo, Y. Q.: Oscillatory behavior of two nonlinear microbial models of soil carbon decomposition, *Biogeosciences*, 11, 1817–1831, doi:10.5194/bg-11-1817-2014, 2014.
- Wieder, W. R., Bonan, G. B., and Allison, S. D.: Global soil carbon projections are improved by modeling microbial processes, *Nat. Clim. Change*, 3, 909–912, 2013.
- Wieder, W. R., Grandy, A. S., Kallenbach, C. M., and Bonan, G. B.: Integrating microbial physiology and physio-chemical principles in soils with the Microbial-Mineral Carbon Stabilization (MIMICS) model, *Biogeosciences*, 11, 3899–3917, doi:10.5194/bg-11-3899-2014, 2014.
- Wieder, W. R., Allison, S. D., Davidson, E. A., Georgiou, K., Hararuk, O., He, Y., Hopkins, F., Luo, Y., Smith, M., Sulman, B., Todd-Brown, T., Wang Y.-P., Xia, J., and Xu, X.: Explicitly representing soil microbial processes in earth system models, *Global Biogeochem. Cy.*, 29, doi:10.1002/2015GB005188, 2016.
- Wutzler, T. and Reichstein, M.: Colimitation of decomposition by substrate and decomposers – a comparison of model formulations, *Biogeosciences*, 5, 749–759, doi:10.5194/bg-5-749-2008, 2008.
- Wutzler, T. and Reichstein, M.: Priming and substrate quality interactions in soil organic matter models, *Biogeosciences*, 10, 2089–2103, doi:10.5194/bg-10-2089-2013, 2013.